



**Paperless  
Conference System**

# Paperless conference system

**Modern concise industry style, Simply and elegance.**

Metal frame and TP screen perfect integrated and simple design.  
Superb craft metal framework with Follow Ergonomic Design Concept,  
Comfortable look and feel with high quality.



**Desktop Paperless All-in-one Terminal,  
high efficient and intelligent .**

Various practical functional application, make the conference more efficient.



**Supports multiple formats,  
Reach all your needs**

Supports DOC,DOCX,PDF,PPT,PPTX,XLS,XLSX,  
JPG,PNG,BMP,MP3,MP4,AVI,FLV,WMV and other file formats.

**Hot Stand-by For Smooth Operation**



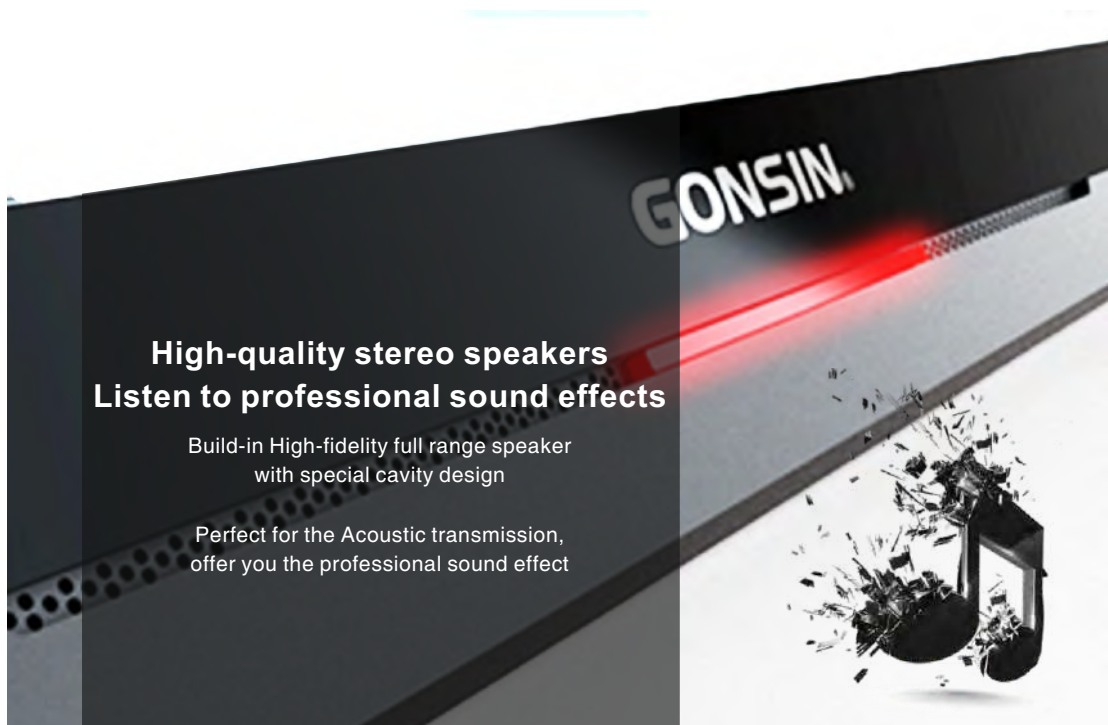
The system has hot stand-by function, which supports dual backup for conference server,  
conference management software.  
Seamless switch ensure smooth operation and data security.

## Latest paperless conference operating system V2.0

Based on Android system, optimizes system framework, More efficient.  
With GONSIN Paperless Terminal software, Meet all your needs, and give you a perfect conference environment.



**Reduce conference cost significantly, Zero copyright fee of the operating system .**





1920X1080



Enhanced eye protection



## Realistic Images

GON SIN Desktop Paperless All-in-one terminal uses high contrast FHD screen. Screen vivid, professional configuration with eye protection mode.



## Multiple Technical Methods, Ensure information Security

It utilizes data encryption and anti-restoration technique to ensure information security;  
The software adopts colsed-off management;  
It takes H.264 algorithm to encrypt data with unified data storage in server;  
The network is MINA framework, which is stable and reliable to avoid information leak.



## Double screen with multipurpose

Flexible module-based solution,easily to achieve the functional expansion.

Meet the exact customer needs, offering a versatile conference solution.





## Large Platform, Great Integration

GONSIN paperless conference system is based on GONSIN professional conference platform.



**GONSIN®**



paperless conference  
system

+



10000Series

+



conference management  
software

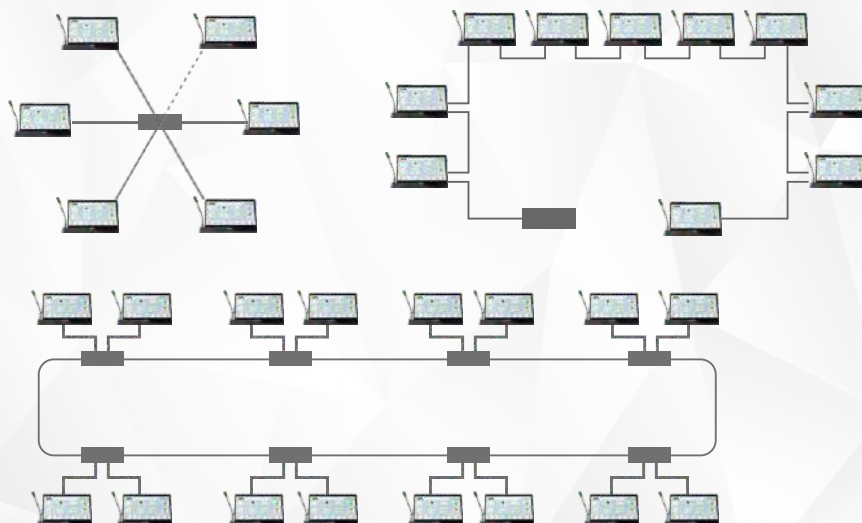


## Various Connection Ways, Convenient Installation

GONSIN paperless conference system support wired or wireless connection methods including daisy-chain, star, mix connection.

Flexible cabling reduces project workload, make large-scale construction easier.

The Paperless Conference System Terminal with no capacity limit, the amount of discussion system can up to 65025.





## ◆ Desktop All-in-one Terminal



■ Desktop All-in-one Terminal  
(single screen) DCS-2061



■ Desktop All-in-one Terminal  
(dual screens) DCS-2062

### ◆ Basic Functions

- ◆ In compliance with IEC60914 international standard, utilize digital audio processing and transmission technology
- ◆ With full digital audio technology, built-in high-speed CPU and high-performance digital audio processor (DSP)
- ◆ 15.6 inches LCD screen( resolution 1920 × 1080), support more than 10 points touch control. Slim design with narrow bezel, the suitable 16:9 displayratio provides a superior users viewing experience.
- ◆ Support independent adapter to supply power and GONSIN10000N system distributed power and intelligent grouping management.
- ◆ Conference terminal, power HUB and conference server are all connected by network cables. Flexible cabling reduces project workload, makes large-scale construction projects easier.
- ◆ It supports daisy-chain connection, star connection and mixed connection. The system is highly stable and reliable. The breakdown of one extension won't influence the other extensions, and the malfunction of one attachment among the extensions won't influence the system to work.
- ◆ The cabling of terminal is bottom mounted, which supports hidden or open installation, to make the desktop clearer and tidier.
- ◆ Automatic restoration function: supports hot plug.
- ◆ With headphone jack (Ø 3.5 mm) and adjustable volume.
- ◆ Built-in MIC jack (Ø 3.5 mm) to connect with external MIC, which meets the requirements of different usage scenarios.
- ◆ Built-in left and right loudspeakers and adjustable volume. Reasonable tune trope design, output clear and loud sound. Adjusting volume through screen touch is available.
- ◆ Registration function: key to register, plug-in card to register(according number),plug-in card to register(non-according number),supplementary register or revocatory register. Attendance is counted automatically and the result can be displayed on the screen and terminal.registration is initiated and ended by paperless terminal(chairman)
- ◆ Voting function:started and ended by paperless terminal(chairman), the results can be displayed on LCD screen.
- ◆ Customized voting function: The paperless terminal(chairman) can initiate and end the customized voting, voting results can be displayed on paperless terminal. The voting content is defined by GONSIN intelligent Conference management software.
- ◆ Call service: participants place a call via paperless terminal. The service staff will provide the service in according to the request displayed on the paperless call service terminal. Basic functions: paper, pen, tea, towel and etc, the functions can be customized.
- ◆ Terminal can display user's info, conference info, conference results and on-site seating map.

- ◆ Digital conference files management: it includes browsing files and sharing screen
- ◆ Browsing conference files: before the conference, the digital files could be preset on the paperless terminal, the user could open and browse the files; it supports DOC, DOCX, PDF, PPT, PPTX, JPG, PNG, BMP, MP3, MP4, AVI, FLV, WMV and other format files. Files can be displayed in screen sharing status.
- ◆ Sharing screen: when the user is browsing the files via paperless terminal, it can share the screen and other terminals could display the same content, including page scroll, paging, notes and others steps.
- ◆ Files note function: users can make notes on files, the notes can be saved in the server.
- ◆ Screen sharing and synchronizing screen function: user can initiate screen sharing, all terminals will be displayed the same content; After exit from the sharing screen, user can synchronize the screen to the sharing one manually. The sharing content can be displayed on other display devices simultaneously.
- ◆ GONSIN paperless conference system has developed on Android platform, it utilizes data encryption and anti-restoration technique to ensure information security.
- ◆ Every serial-number is one and only one, the conference system supports automatically or manually assign ID to the corresponding equipment.
- ◆ Support the transmission of internal messages, user can communicate via sending internal messages
- ◆ Support digital whiteboard function, user can create whiteboard quickly, the content will be saved in the server.
- ◆ Support surfing the internet via the browser.
- ◆ Support reading files from USB flash disk
- ◆ Support paper nameplate insertion
- ◆ Support connection to exterior video by an Encoder
- ◆ System capacity unlimited (wired connection)
- ◆ Randomly set any one terminal as Chairman Terminal

**More functions of The Paperless Chairman Terminal are as below.**

- ◆ Support send mass system messages to all paperless terminals.
- ◆ Support conference topic control, allow the user to initiate attendance registration and voting during the meeting
- ◆ Allow the user to initiate quick voting
- ◆ Support mandatory sharing screen
- ◆ Allow to check conference information, such as attendance registration, ask for leaves, voting process and result, call service information, synchronous screen sharing, mic on/off situation and etc.

**Based on functions of desktop all-in-one terminal (single screen) DCS-2061, desktop all-in-one terminal (dual screens) DCS-2062 has functions as below:**

- ◆ Electronic nameplate utilizes 11.6 inches super bright HD LCD screen( resolution 1366 × 768); 16:9 display ratio for better and higher-quality image display.
- ◆ Display user's information synchronously, such as user's name/position or title /organization name/ Logo and etc, support font/ background/ customized template.



## Desktop All-in-one Discussion Terminal



■ Desktop All-in-one Discussion Terminal (single screen) DCS-2061D



■ Desktop All-in-one Discussion Terminal (dual screen) DCS-2062D

### Basic Functions

■ Based on functions of desktop all-in-one terminal (single screen) DCS-2061, desktop all-in-one discussion (single screen) DCS-2061D has functions as below:

- ◆ Mic button utilizes luminous capacitive touch control design, with concise appearance, convenient operation, accurate response and long service life.
- ◆ Supports 48KHz audio sample freq, acoustic frequency response can up to 20Hz~20KHz.
- ◆ Audio frequency sensitivity of each terminal can be adjusted separately or uniformly.
- ◆ Built-in high-performance digital audio processor( DSP), helpful to remove the useless low-frequency and avoid low-frequency acoustical shock, which better improve the sharpness of sound.
- ◆ Standard electret cardioid pickup pattern microphone with red ring luminant to indicate active mic(On or Off). Three kinds length of double soft gooseneck microphone stems for various conferences (standard: 410mm, optional: 310mm/510mm).
- ◆ Pluggable gooseneck microphone stem, convenient for equipment maintenance.
- ◆ Highly resistant to mobile phone interference
- ◆ System mode: VOX, Auto, FIFO, Operator.
- ◆ VOX function: in VOX mode, the unit will be activated automatically and synchronously when the user start to speak; VOX sensitivity can be adjusted by the server ( high, middle, low); microphone time-out is adjustable ( 20-250 seconds).
- ◆ 1-4 delegate units can be activated and used at the same time,except the chairman unit
- ◆ Optional HD video camera tracking matrix ,switcher or HD camera, can realize HD automatic camera tracking, supporting preset overall view
- ◆ 8\*1+3 video matrix is built in the server, and standard definition video conference camera is selected, which can realize automatic camera tracking function of standard definition and support preset overall view

**More functions of The Paperless Chairman Terminal are as below.**

- ◆ Chairman terminal can be activated at any time without limitation of presetting mic quantity
- ◆ priority button to override all active delegate terminals

■ Based on functions of desktop all-in-one discussion terminal (single screen) DCS-2061D, desktop all-in-one discussion terminal (dual screen) DCS-2062D has functions as below:

- ◆ Electronic nameplate utilizes 11.6 inches super bright HD LCD screen( resolution 1366 ×768);16:9 display ratio for better and higher-quality image display.
- ◆ Display user's information synchronously, such as user's name/position or title /organization name/ Logo and etc, support font/ background/ customized template.



## ◆ Desktop All-in-one Discussion and Interpretation Terminal



■ Desktop All-in-one Discussion and Interpretation Terminal (single screen) DCS-2061DI



■ Desktop All-in-one Discussion and Interpretation Terminal (dual screen) DCS-2062DI

### ◆ Basic Functions

■ Based on functions of desktop all-in-one terminal DCS-2061, desktop all-in-one discussion and interpretation (single screen) DCS-2061DI has functions as below:

- ◆ Mic button utilizes luminous capacitive touch control design, with concise appearance, convenient operation, accurate response and long service life.
- ◆ Supports 48KHz audio sample freq, acoustic frequency response can up to 20Hz~20KHz.
- ◆ Audio frequency sensitivity of each terminal can be adjusted separately or uniformly.
- ◆ Built-in high-performanc digital audio processor (DSP), helpful to remove the useless low-frequency and avoid low-frequency acoustical shock, which better improve the sharpness of sound.
- ◆ Standard electret cardioid pickup pattern microphone with red ring luminant to indicate active mic (On or Off). Three kinds length of double soft gooseneck microphone stems for various conferences (standard: 410mm, optional: 310mm/510mm).
- ◆ Pluggable gooseneck microphone stem, convenient for equipment maintenance.
- ◆ Highly resistant to mobile phone interference
- ◆ System Mode: VOX, Auto, FIFO, Operator.
- ◆ VOX function: in VOX mode, the unit will be activated automatically and synchronously when the user start to speak; VOX sensitivity can be adjusted by the server ( high, middle, low); microphone time-out is adjustable ( 20-250 seconds).
- ◆ 1-4 delegate units can be activated and used at the same time,except the chairman unit
- ◆ Optional HD video camera tracking matrix ,switcher or HD camera, can realize HD automatic camera tracking, supporting preset overall view
- ◆ 8\*1+3 video matrix is built in the server, and standard definition video conference camera is selected, which can realize automatic camera tracking function of standard definition and support preset overall view

**More functions of The Paperless Chairman Terminal are as below.**

- ◆ Chairman terminal can be activated at any time without limitation of presetting mic quantity presetting mic limit
- ◆ Chairman priority button to override all active delegate terminals
- ◆ Support 32 (1+31) channels simultaneous interpretation
- ◆ Select interpretation channel and adjust volume on paperless LCD screen
- ◆ acoustic frequency response can up to 20Hz~20KHz.

■ Based on functions of desktop all-in-one discussion and interpretation (single screen) DCS-2061DI, desktop all-in-one discussion and interpretation (dual screen) DCS-2062DI has functions as below:

- ◆ Electronic nameplate utilizes 11.6 inches super bright HD LCD screen( resolution 1366 ×768);16:9 display ratio for better and higher-quality image display.
- ◆ Display user's information synchronously, such as user's name/position or title /organization name/ Logo and etc, support font/ background/ customized template.

# Call Service Terminal

DCS-2061S



## Basic Functions

- ◆ In compliance with IEC60914 international standard, utilize digital audio processing and transmission technology
- ◆ The cabling of terminal is bottom mounted, which supports hidden or open installation, to make the desktop clearer and tidier.
- ◆ 15.6 inches LCD screen( resolution 1920 × 1080), support more than 10 points touch control. Slim design with narrow bezel, the suitable 16:9 display ratio provides a superior users viewing experience.
- ◆ Support independent adapter to supply power and GONSIN10000N system distributed power and intelligent grouping management.
- ◆ Conference terminal, power HUB and conference server are all connected by cable. Flexible cabling reduces project workload, makes large-scale construction project easier.
- ◆ It supports daisy-chain connection, star connection and mixed connection. The system is highly stable and reliable. The breakdown of one extension won't influence the other extensions, and the malfunction of one attachment among the extensions won't influence the system to work.
- ◆ Automatic restoration function: supports hot plug.
- ◆ Built-in left and right loudspeakers (2W) and adjustable volume (9 levels). Reasonable tune trope design, output clear and loud sound. Adjusting volume through screen touch is available.
- ◆ Terminal can display user's info, conference info, conference results and on-site seating map.
- ◆ The serial-number is one and only one, the conference system supports automatically or manually assign ID to the corresponding equipment.
- ◆ Call service: participants place a call via paperless terminal. The service staff will provide the service in according to the request displayed on the paperless call service terminal. Basic functions: paper, pen, tea, towel and etc, the functions can be customized.

## Terminal Function Comparison Table

Name	Model No.	Paperless	Discussion	Simultaneous	Nameplate
Desktop All-in-one Terminal (single screen)	DCS-2061	✓			Paper Nameplate
Desktop All-in-one Discussion Terminal (single screen)	DCS-2061D	✓	✓		Paper Nameplate
Desktop All-in-one Discussion and Interpretation Terminal(single screen)	DCS-2061DI	✓	✓	✓	Paper Nameplate
Desktop All-in-one Terminal(dual screen)	DCS-2062	✓			Electronic Nameplate
Desktop All-in-one Discussion Terminal (dual screen)	DCS-2062D	✓	✓		Electronic Nameplate
Desktop All-in-one Discussion and Interpretation Terminal(dual screen)	DCS-2062DI	✓	✓	✓	Electronic Nameplate
Call Service Terminal	DCS-2061S	Receive call service information			

Technical Parameters

System Specifications

Desktop Paperless Terminal

Installation Type	Desktop
Connection Method	Network Cable
Color	Black
Operation System	Android
Dominant Frequency	1.8G
Memory	2G, DDR3
Internal Storage Capacity	8GB
Screen Dimensions	15.6" slim bezel, 16:9
Resolution	1920×1080
Extension Interface	USB×2
Headphone/Mic Port	Ø3.5 mm×2 stereo jack
Headphone Load	> 16Ω
Headphone Volume	10mW
Built-in Loudspeaker	2×2W
Dimension (L*W*H)	367mm×158mm×213mm (without MIC)
Net Weight(with MIC)	3kg
Power	24V
Power Supply	Adapter, Conference Server or Power Hub
Max. Power Consumption	30W (There's something differences among different models.)
Working Temperature	0~45°C
Storage Temperature	-20~50°C

Discussion Function

DCS-2061D/DCS-2061DI/DCS-2062D/DCS-2062DI

Acoustic frequency response	20Hz~20kHz
Sensitivity	-46 dBV/Pa
VOX Sensitivity	H/M/L (76dB/80dB/82dB)
Equivalent Noise Level	20dBA (SPL)
Max. SPL	125dB (THD<3%)
THD	< 0.05%
SNR	≥96dB
MIC Type	Heart pattern directional electret
MIC Length	410mm (standard) 310mm/510mm (optional)
Directivity	0°/180°: >20 dB (1 kHz)
Input Impedance	2kΩ

Simultaneous Interpretation Function

DCS-2061DI/DCS-2062DI

Frequency Response	20Hz~20kHz
THD	(THD)<0.3%
SNR	≥95dB
Channel	32-channel

Nameplate Feature and Function

DCS-2062/DCS-2062D/DCS-2062DI

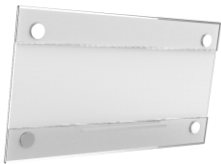
Screen Size	11.6", 16:9
Resolution	1366×768
Contrast	1000:1
Brightness	250cd/m²
Best Angle	Full view

Terminal Nameplate Buckel ( optional)

GX-PNP101

Basic Functions

- ◆ Meet the demand of an economic nameplate display. The Terminals offer paper nameplate slots in the rear panel, and Nameplate Buckle used as a combination part of the Terminal.
- ◆ High-quality acrylic materials, high-class design and smooth surface. Magnetic snap, easy and convenient to operate.
- ◆ Optional accessory, for Desktop Paperless All-in-one Terminal without electronic nameplate.



Material	Transparent acrylic plastic + Magnetic snap
Dimension (L*W)	285mm×155mm
Paper Dimension (L*W)	280mm×150mm

DCS-2061/2062 can be equipped with optional modules: camera module, IC card module and fingerprint identification module, which can realize the functions of face recognition registration, camera and video, speech camera tracking, IC card plug-in registration, fingerprint registration, to meet the needs of different conferences.

## ◆ Camera module GX-CAM101



### ◆ Basic Functions

- ◆ Face recognition to realize conference registration function
- ◆ Realize camera and video functions
- ◆ Realize camera tracking function when speech
- ◆ Localized face recognition comparisons without networking
- ◆ Support living body test with fast recognition speed

### ◆ Technical Specifications

Pixel	2 million
Focusing mode	fixed focus
Support resolution and frame rate	1920*1080@30fps, 1280*1024@30fps, 1280*720@30fps, 1024*768@30fps, 800*600@30fps, 640*480@30fps, 320*240@30fps
Image sensor	HD COMS 1/2.7"
Camera speed	<0.1S
Face recognition speed	500ms

# ◆ Fingerprint Identification Module

GX-FPR101



## ◆ Basic Functions

- ◆ Fingerprint identification to realize conference registration function
- ◆ Self-learning function: In the process of fingerprint identification, the newly extracted fingerprint eigenvalue is fused into the fingerprint database after the recognition is successful, so that users can use it more easily after that.
- ◆ 360 Degree Automatic Correction Recognition Function: Pressing at any angle on the module with the recorded fingerprint
- ◆ Fingerprint recognition rate: 99.9999%

## ◆ Technical Specifications

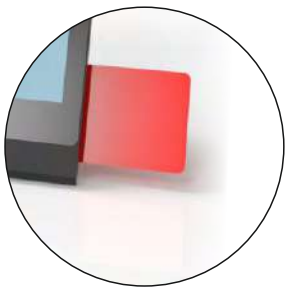
Acquisition type	capacitive
Fingerprint image	192 x 192 (pixel), 508DPI
Fingerprint registration capacity	1000
Recognition speed	450ms
Note: Can not use with IC card module at the same time	

# ◆ IC card Module

GX-ICC101

## ◆ Basic Functions

- ◆ Registration function: plug-in card to register(according number),plug-in card to register(non-according number)
- ◆ In compliance with ISO7816-2:1988 international standard
- ◆ Touch point is stable and reliable



## ◆ Technical Specifications

IC Card Type	Contact IC Encryption Card
IC Card Chip	Siemens SLE4442
IC Card Capacity	256 bytes
Note: Can not use with fingerprint recognition module at the same time	





# Paperless Server GX-DS301



## Basic functions

- ◆ In compliance with IEC60914 international standard,utilize digital audio processing and transmission technology
- ◆ All the equipment are connected by cable. Flexible cabling reduces project workload, makes large-scale construction easier.
- ◆ Automatic restoration function: supports hot plug.
- ◆ To upload, invoke, store the congress files and other file management
- ◆ To process and manage all data, command code and function setting for paperless system
- ◆ Support paperless congress terminal management
- ◆ Support participant data management, two establishing mode:online, offline
- ◆ Support seat setting, create conference room map, seat arrangement, customized editing
- ◆ Support congress management, create congress agenda, set congress time and place
- ◆ The congress file format supports DOC, DOCX, PDF, PPT, PPTX, XLS, XLSX, JPG, PNG, BMP, MP3, MP4, AVI, FLV, WMV and other general document format
- ◆ Support conference topic management, attendance registration, voting, grading, evaluation, election function, support multi-topic voting and other customized functions.
- ◆ Support customized user interface's color and size, background, style, data connection and others.

## Technical Specifications

Mainboard	Intel H81 chipset Industrial Motherboards
CPU	Intel Core i5 Processor,6M Cache, up to 3.20 GHz
Memory	DDRIII 4G
SATA	1TB SATA
Port	1×VGA,2×LAN 1000M/2×USB 3.0/4×USB 2.0/1×AUDIO OUT/1×MIC IN
Ethernet	10/100/1000Mbps, two network port(left effective setting)
Power	AC220V, 300W
Operating Temperature	0~60°C
Storage Temperature	-40~80°C
Structure	heavy steel
Installation	2U cabinet
Dimensions(L*W*H)	428×350×89mm
Weight	9.5kg

# Congress Server

## GONSIN1000N



### Basic Functions

- ◆ Black tempered glass panel design, with navigation knob, OLED screen to display system status information, and provide Chinese/English and other language menus
- ◆ With wired and wireless seamless compatible technology, wired conference terminals and wireless conference terminals can be mixed into the same conference server for unified management, data intercommunication, and realizing large system platform for sharing multi-mode conference terminals
- ◆ Maximally support 128 wireless APs to achieve greater wireless coverage area and terminal seamless roaming
- ◆ Developed based on LINUX operating system platform, adopt full digital audio technology, support 48kHz audio sampling frequency, built-in DSP digital audio processor, support treble and bass adjustment
- ◆ Adopt WiFi wireless communication technology, in compliance with IEEE 802.11n network standard, adopt 128-bit AES encryption technology, support WEP/WPA/WPA2 wireless security technology, avoid eavesdropping and malicious interference
- ◆ Support SSID wireless network settings, which ensures multiple systems can be used in the same environment at the same time, and do not interfere with each other
- ◆ Each terminal has unique unit ID; the congress system can assign unit ID to congress terminal automatically or manually
- ◆ It provides 4-channel wired conference terminal interface and supports hand-in-hand connection, star connection and mixed connection. The breakdown of one terminal won't influence the other terminals, and the malfunction of one terminal cabling will not affect the whole system, ensuring the system stability
- ◆ Support dual-server hot stand-by function. When the current server doesn't work, it will automatically switch to the stand-by server
- ◆ Support the application of splitting and merging of the conference room, with 4 channels of audio grouping output, can be split into an independent system using in multiple meeting rooms, or can be used at the same time as the whole system, which is convenient and flexible
- ◆ Support separated adjustment of audio and sensitivity of the terminal; adjust the sound effect based on the on-site speaking situation
- ◆ A single server supports the maximum number of active terminals: 4 terminals for a single wireless system, 5 terminals for a single wired system, and 5 terminals for mixed use of wireless and wired systems

- ◆ Discussion function: support VOX, Auto, FIFO, Operator, Request and PTT
  - ◆ VOX function: in VOX mode, the unit will be activated for user speaks; VOX sensitivity can be adjust by the server; microphone time-out is adjustable
  - ◆ Auto function: Only the number of microphones limited by the system can be activated. When the number of open microphones is greater than the system limit, press the speaking button, the microphone cannot be turned on, you need to turn off the microphones that have been turned on, and then the microphone can be turned on by pressing the button.
  - ◆ FIFO function: When the number of open microphones is greater than the system limit, press the speak button to turn on and automatically turn off the earliest open microphone
  - ◆ Operator function: When the number of open microphones is greater than the limit, press the speak button to enter the application waiting state. After the opened microphones are closed, the applied microphones will be opened automatically
  - ◆ Request function: In Request, press the speak button and the microphone turns on and release the speech button and the microphone will be turned off
  - ◆ PTT function: the delegate send request-to-speak by terminal, and can speak upon chairman approval. The chairman terminal can be activated anytime without approval
- ◆ With Automatic Speech Recognition System, it can realize the transcription of speech into text
- ◆ Support USB automatic recording function, after inserting the U disk in the front panel, the system audio can be recorded automatically/manually, and the current recording status can be displayed in real time
- ◆ Built-in real-time clock and perpetual calendar, which can display the current time on the congress server and congress terminal
- ◆ Support one-key shutdown by server, and all wireless congress terminals are off, which reduces workload greatly
- ◆ With full digital interpreter console, it can achieve 6-channel (wireless terminal) or 32-channel (wired terminal) simultaneous interpretation function (including the floor channel), and the audio frequency response of the simultaneous interpretation channel can reach 20Hz~20kHz
- ◆ Optional HD video camera tracking matrix, switcher or HD camera, HD automatic camera tracking with preset panoramic view can be realized. It supports up to 8 HD cameras and multi system cascading to meet the camera tracking requirements of large systems and conference venues
- ◆ The server supports the infrared mobile camera tracking function. It needs to be equipped with an infrared automatic tracking camera and a conference terminal (specified model) to realize the intelligent tracking and positioning of the wireless conference terminal. The wireless microphone terminal can be moved freely within the infrared detection range, and can be tracked in real time without resetting the preset position
- ◆ The advanced TCP / IP connection control mode is adopted between the congress server and the control computer, which can realize the control management, remote diagnosis and remote upgrade of the congress system

Extended functions with PC/software control:

- ◆ Can realize conference registration, voting, different voting agenda , and compatible use with GONSIN paperless conference system
- ◆ Operator can click terminal icons for terminal management such as approve or reject the delegate to speak
- ◆ Speaking time limit can be set, the active terminal will be turned off when the speaking time limit reaches
- ◆ It can monitor the system running status in real time, failure alerts will be prompted out immediately, so to ensure important meeting for smooth running
- ◆ It can realize dual software hot stand-by function. One control computer can be set to the backup mode and connected to the system. In case of the malfunction of the current control computer, the backup computer can be hosted automatically, so to ensure the smooth progress of the conference without interruption

◆ Technical Specifications

System capacity	65025
Audio frequency response	20Hz~20kHz
Signal-to-noise ratio	>96dBA
Channel isolation	>85dB
Dynamic Range	>94dB
Total harmonic distortion	<0.05%
Audio interface	1 balanced audio input (XLR), 1 balanced audio output (XLR), 2 unbalanced audio output (RCA), 4-channel grouped audio output (Phoenix)
Maximum audio output	LINE OUT: +20 dBu unbalanced, BLANCE OUT: +20 dBu balanced MIXER OUT: +20 dBu balanced, AUDIO OUT 1 ~ 4: +20 dBu balanced
Output impedance	>1kΩ
Central control method	RS-232
PC communication method	TCP/IP
Camera control method	RS-485
Wired congress terminal interface	RJ45×4, adopt own power supply protocol
Network Interface	RJ45×2, support standard POE power supply
Recording interface	USB (U disk format: FAT32)
Recording file size	0.8M/min
Supported cameras	8 (SD)
Video input interface	RCA×8(1Vp-p 75Ω) or SDI×4 (SD/HD/3G)
Video output interface	RCA×4(1Vp-p 75Ω) or SDI×1 (SD/HD/3G)
Camera Tracking Protocol	PELCO-P/PELCO-D/VISCA
Display	OLED (61mm×37mm)
Installation	Desktop or 19' cabinet installation
Power Supply	AC100~240V, 50/60Hz
Maximum power consumption	300W
Dimensions (L×W×H)	483×437×90mm
Weight	8.9kg
Operating temperature	-0~45°C
Storage temperature	-20~50°C



## **Power Hub** HUB-P150S



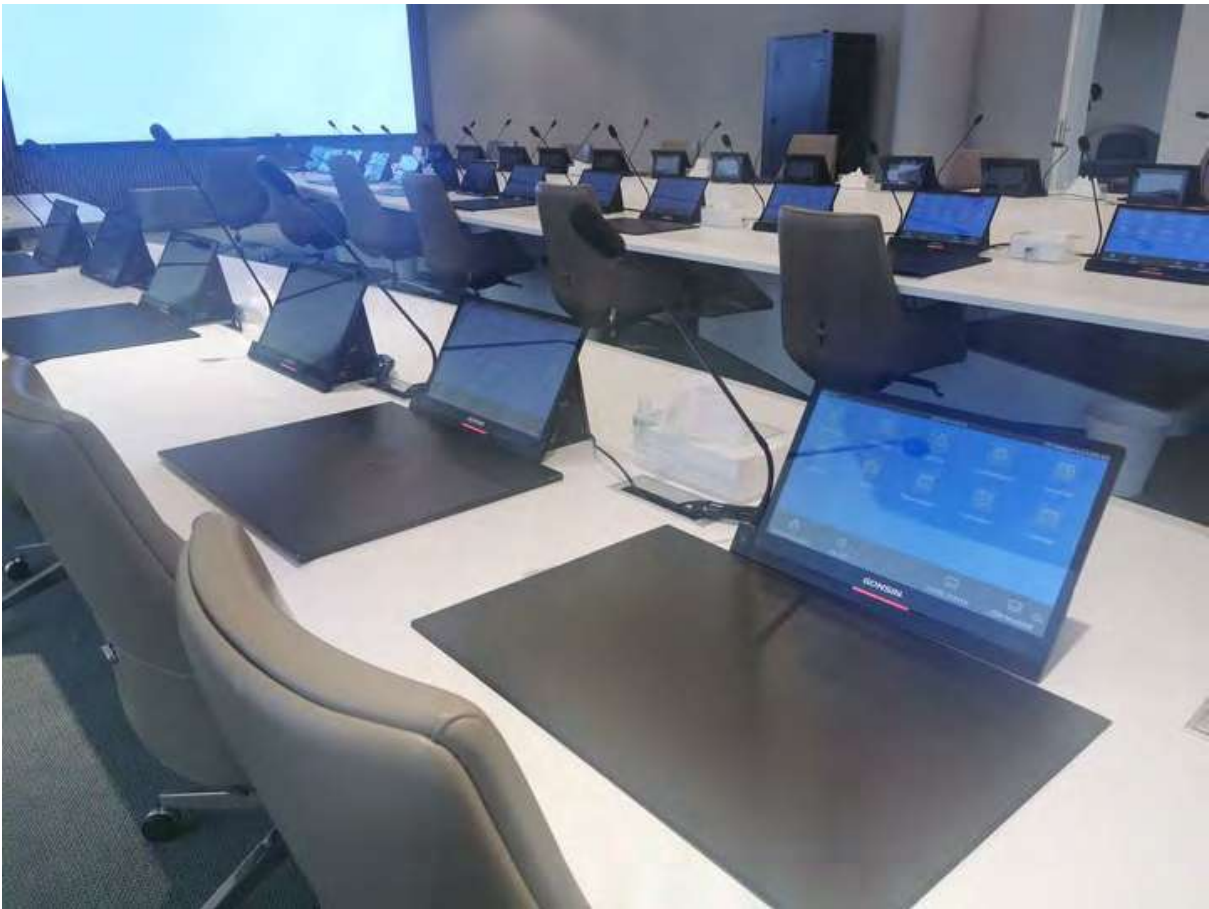
### **Basic functions**

- ◆ In compliance with IEC60914 international standard, utilize digital audio processing and transmission technology
- ◆ Based on digital control framework and high-speed CPU, the system has more stable performance and higher processing speed
- ◆ Developed on Linux-based OS platform, the server has robust stability and thus applies to large-sized convention centers with strict running conditions
- ◆ Power Status Indicator, support detection for voltage, current, temperature, overload, overheat
- ◆ Distributed management function, controlled by the server automatically, the operation data is uploaded by network
- ◆ Adopt distributed power supply management, single power HUB can connect to up to 65 terminals (turn off built-in speaker) or 5 desktop paperless all-in-one terminals (according to terminal model and the length of cable); it can form a super-large system with 65,025 terminals, by adding power hubs and servers. Power HUB are controlled and managed by the server
- ◆ All the equipment are connected by cable. Flexible cabling reduces project workload, makes large-scale construction easier.
- ◆ It supports daisy-chain connection, star connection and mixed connection. The system is highly stable and reliable. The break down of one extension won't influence the other extensions, and the malfunction of one attachment among the extensions won't influence the system work.
- ◆ Automatic restoration function: supports hot plug.
- ◆ The serial-number is one and only, the congress system supports automatically or manually assign ID to the corresponding equipment.
- ◆ Built-in congress terminal auto-detect mechanism
- ◆ Real-time monitor for system operation, to find out system error in time
- ◆ Co-work with congress server to expand congress terminal connection and designed to meet the power requirement for larger congress system.
- ◆ 5 terminal connection ports and 2 extended connection ports for HUB
- ◆ Synchronously start up and shut down with server
- ◆ More functions when cooperates with system control software



Technical Parameters

System Capacity	65,025
Standard Capacity	65 Terminals(turn off built-in speaker)/25 Terminals(turn on built-in speaker)/5 Desktop Paperless All-in-one Terminals
Status Indication	LED
Power	AC 100~240V,50/60Hz
Max Power Consumption	150W
Terminal Connection Port	RJ45×7
Operating Temperature	0~45°C
Storage Temperature	-20~50°C
Dimensions(L×W×H)	238mm×165mm×45mm
Installation	Hidden installation or cabinet installation, support 2 HUB side by side cabinet installation
Weight	2kg



## **Interpreter Console** IC-2032N



### **Basic Functions**

- ◆ In compliance with IEC60914 international standard
- ◆ The design of physical buttons / knobs is reasonable , which is easy to operate; The buttons / knobs are sensitive with good touch, accurate operation response, long service life and without mechanical button sound
- ◆ With fully digital audio technology, built-in high-speed CPU
- ◆ Interpreter console, conference terminal, power HUB and conference server are all connected by network cables. Flexible cabling reduces project workload and makes large-scale construction projects easier
- ◆ It supports hand-in-hand connection, star connection and mixed connection. The system is highly stable and reliable. The breakdown of one terminal won't influence the other terminals , and the malfunction of one terminal cabling will not affect the whole system, ensuring the system stability
- ◆ Automatic restoration function: supports hot plug
- ◆ Supports 48kHz audio sampling freq, acoustic frequency response can be up to 20Hz to 20kHz
- ◆ Built-in high-performance digital audio processor( DSP), helpful to remove the useless low frequency and avoid low-frequency acoustical shock, which is better to improve the clarity of sound
- ◆ Support 32 channels simultaneous interpretation(including the floor channel)
- ◆ Support direct interpretation and relay interpretation
- ◆ 7-inch TFT LCD screen to display setting information ,input and output channel information
- ◆ With channel selection button, long press to quickly increase / decrease the channel, short press to increase / decrease the channel, convenient to select channels
- ◆ 7 input channels can be preset, with corresponding shortcut keys and input channel occupation indicator
- ◆ 3 output channels can be preset , with corresponding shortcut keys. When all interpreter consoles are closed, the output channel can be automatically switched to the floor channel
- ◆ Standard cardioid directional electret microphone with indicator ring (On or Off) . Multiple soft gooseneck microphone stems can be selected (standard: 410mm, optional:310mm/510mm)
- ◆ Pluggable microphone stem; During the meeting recess, it can be disassembled for equipment maintenance
- ◆ Built-in 2W loudspeaker with volume switch; Can play the floor channel or interpreted channel language
- ◆ With the same channel interlock function, when the output channel is preset, the occupied channel will skip

automatically. Channel output can be set to interlock mode and free mode

- ◆ The number of interpreter console in the same room is not limited
- ◆ Through software setting, multiple interpreter consoles can be set up in a single language channel. When the interpreter console in the same language channel turns on the microphone, the microphone of the previous interpreter terminal will be automatically turned off
- ◆ MUTE key to enable a brief muting of the microphone for cough cut
- ◆ Speaking Speed remind function, the interpreter can press the "slow" key to remind the speaker to slow down the speaking speed (The microphone's indicator ring or screen will flash)
- ◆ Left and right headphone output jack (3.5 mm×2), connect the headset to listen to the floor or interpreted channel language, with left and right selection buttons; headphone volume is adjustable
- ◆ Left and right microphone input jack (3.5 mm×2), can be connected to external microphone, with left and right selection buttons, to meet different usage scenarios
- ◆ Left and right recording output jack (3.5 mm×2), can be connected to recording device, with left and right selection buttons, the output audio depends on the channel listened by the interpreter console
- ◆ With message function, text message can be sent to interpreter terminal through management software
- ◆ With call service function, interpreters can call the administrator to provide help through the interpreter console
- ◆ Setting the interpreter console information can be locked by password, and the interpreter can use the setting function through password and IC card
- ◆ No need independent system connection, it can be mixed connected with all conference terminals
- ◆ Highly resistant to mobile phone interference
- ◆ Every interpreter comes with an unique serial number and the conference system supports automatically or manually assigning ID to the corresponding equipment
- ◆ Interpretation timing function (timing unit: hour/minute)

## Technical Specifications

Installation Way	Desktop
Connection Way	Network Cable
Display Specifications	7-inch TFT color display
Frequency Range	20Hz~20kHz
Sensitivity	-46 dBV/Pa
Equivalent Noise Level	20dBA(SPL)
Max. SPL	125dB(THD<3%)
THD	<0.05%
SNR	≥96dB
Microphone Type	Cardioid directional electret
Directivity	0°/180°: >20 dB (1 kHz)
MIC Stem Length	410mm (standard); 310mm/510mm (optional)
Input Impedance	2KΩ
Headphone Output Jack	3.5 mm jack×2
Microphone Input Jack	3.5 mm jack×2
Headphone Load	>16Ω
Headphone Volume	10mW
Built-in Loudspeaker	2W/8Ω
Channel Number	32 channel (including the floor channel)
Power supply	24V
Max. Power Consumption	7W
Working Temperature	0~45°C
Storage Temperature	-20~50°C

## Encoder GX-SMI301A-H



### Basic functions

- ◆ In compliance with IEC60914 international standard,utilize digital audio processing and transmission technology
- ◆ Support HDMI/CVBS/VGA/YPBPR input, 1 channel 3.5 audio input
- ◆ Support 1920x1080p/1920x1080i/1280x720p/720\*576i/720\*576p /640\*480i and other resolutions
- ◆ Image setting: contrast, brightness, hue, saturation, noise detection,sharpness, smoothing
- ◆ Support RTSP/RTP/RTMP/HTTP/UDP/unicast/multicast protocols(RTMP support user to add user's name and password)
- ◆ Support TCP, UDP, 1000M (RJ45 dual interfaces) transmission, support automatic IP acquisition with DHCP

### Technical Parameters

Input Interface	1*HDMI signal input/ 1*VGA signal input/ 1*YPBPR signal input/ 1*CVBS signal/ 1*3.5 audio input/ 1*RJ45 output
Output Interface	1*RJ45 output
Input Resolution	1920x1080p/1920x1080i/1280x720p/720*576i/720*576p /640*480i and others
Coding Standard	H.264
Output Resolution	640*360~1920*1080, 30 frames
Audio Coding	AAC/MP3, 64Kb/s~384Kb/s
Sampling Frequency	32000, 44100, 48000 and etc
IP Output	1*RJ 100M/1000M adaptable ethernetinterface, TS standard flow, dual stream, ONVIF protocol
Network Protocol	Support HTTP, RTSP, RTMP, UDP, multicast, unicast
Power Supply	AC110~220V 50/60Hz
Power Consumption	12W
Dimensions(L*W*H)	430mm x 250mm x 45mm
Weight	3KG
Operating Temperature	-20°C~ 60°C

# ◆ GONSIN Intelligent Conference Management Software V7.1.0



GONSIN intelligent conference management software V7.1.0 is a sort of background management software for pre-conference, conference, after-conference periods. It bases on networked and digital design, comes with conference data entry, conference management, conference data analysis and other functions. It also provides simple visual operation interface, supports customized interfaces, is easy to use.

Software can operate on the mainstream WIN7/WIN8/WIN10 operation system, easily realize intelligent and human-friendly effective conference management.

## ◆ System Features

### ■ Networked, Digital System Platform

Based on networked and digital design, it connects to conference devices in operation to realize the real-time interaction between management software and device data.

The software is based on modular design, covering a full range of products' functions. It supports customized setting and function modular in according to users' demands.

### ■ Equipment Management

Users can search and set conference equipment by the software to realize central management. After started up, the software will search to the server device in the network and automatically connect to the server.

### ■ Intelligent Participants' Data Creation

If there is discontinuous number of conference devices and make it difficult to create participants' data, users can create participants' data with one click.

### ■ Conference Topic Creation

It supports conference topic creation and topic voting. Users can preset conference topic, edit conference's name, data, place, content and other information, set conference discussion, conference voting and others by conference management software to satisfy the actual conference demands.

### ■ Data Management After Conference

After the end of conference, users can analyse and manage the data by the software, including data checking, data backup export. The conference content could be printed.





## ◆ **Function Introduction**

### ■ **Language Setting**

It supports language setting, after the installation, user can Select the cooresponding language. Customized language is supported.

### ■ **Conference Preparation**

Support information entry, scuh as equipment management, staff data, camera setting, seating setting, card writer, language setting, conference information, topic, attendees, customize screen and etc.

### ■ **Hold Conference**

Provide multiple screen display and system control functions, such as attendance registration, topic management, discussion control and etc.

### ■ **After Conference Process**

After the end the conference, it begins the after-conference information process, the functions include: conference information saving, delegate information management, attendance registration information management( delegate list, delegate checking, print report and etc), voting results management( voting, evaluation, election, check or print grading results), and others.

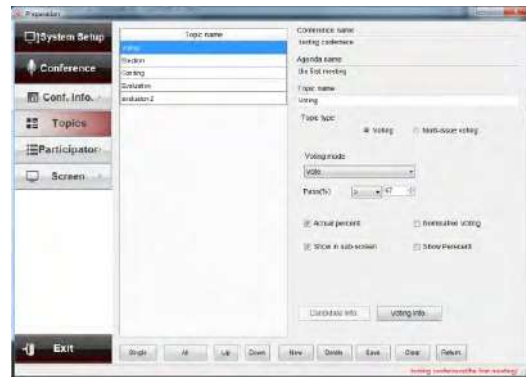
- Compatible with other devices from GONSIN, satisfy the demand for operation of various equipments.

- Network-based design, suitbale for WIN7/WIN8/WIN10 operation system



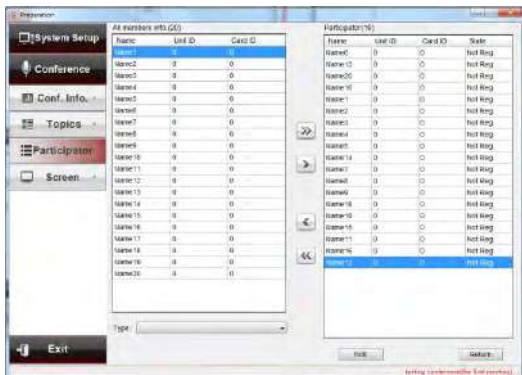
### Conference Information:

user can create a new conference name and relative content, supports editing, deleting conference content.



### Conference Topic:

users can set the conference topic and relative contents, upload conference files in according to conference agenda.



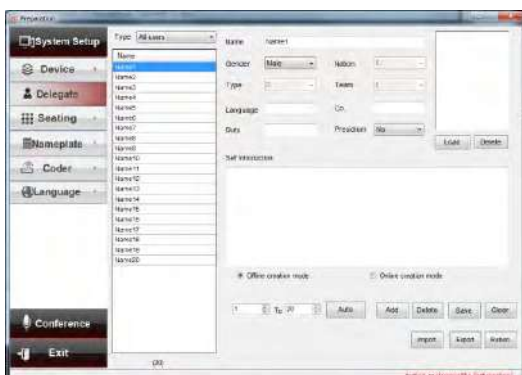
### Participants:

user can select the participants from a person list.



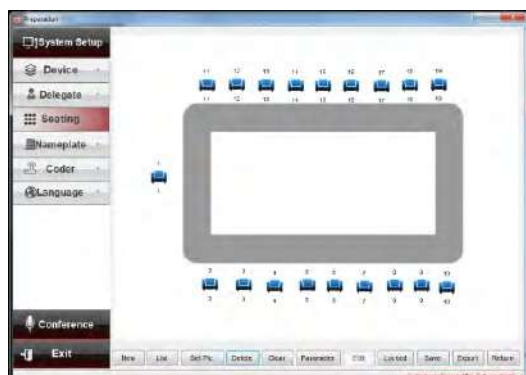
### Equipment management:

in this interface, users can search the online equipments.



### Person Data:

in according to the online equipments, users can create person data, such as name, gender, position, seat number, and support adding, deleting, clearing of participants' data.



### Seat Setting:

users can set the seats in according to the conference venue, make the management more convenient.

# ◆ Paperless Conference Terminal Software V2.0

## ◆ Function Introduction

Paperless conference terminal software can realize digital conference file management, files interaction, checking and sharing. Paperless conference terminal support touch control function, participants can write notes, share the screen. It supports attendance registration, voting, and customized voting, call service, internal message sending and others function within the system. The paperless conference terminal software can appoint any paperless terminal as the chairman/delegate terminal, which make conference management more easier.

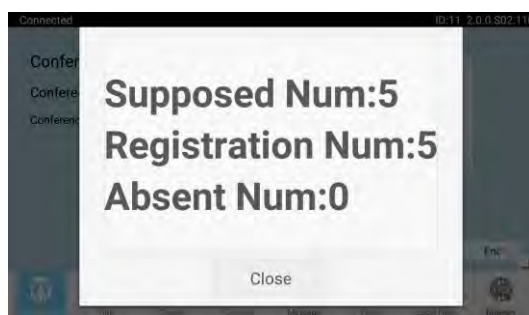
- ◆ Support interface setting for different positions.
- ◆ Support accessible paperless server
- ◆ Support automatic check for updates in each operation
- ◆ Support compatible operation with wired terminals and wireless terminals



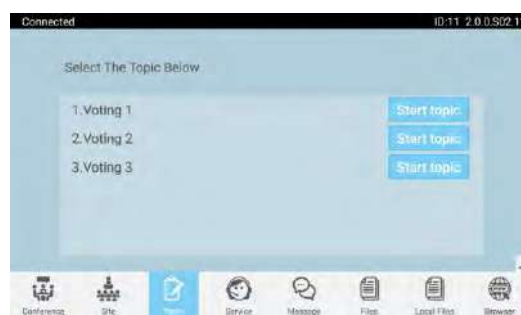
**Paerless terminal (chairman) interface:** display conference overview, participant's information, initiate registration, send message to all paperless terminals, end conference and etc.



**Registration interface:** chairmand terminal initiate registration, all paperless terminal can conduct registration



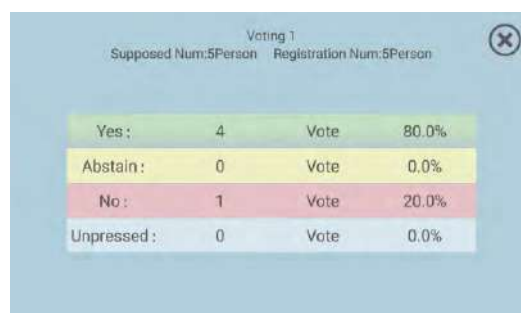
**Registration result interface:** After registration, all paperless terminals display the registration result



**Conference topic interface:** display the preset conference topic list, the chairman can initiate voting in according to the agenda, and all terminals will enter the voting interface.



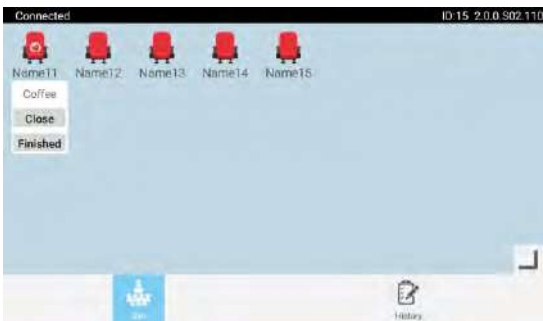
**Voting interface:** press the corresponding button and submit



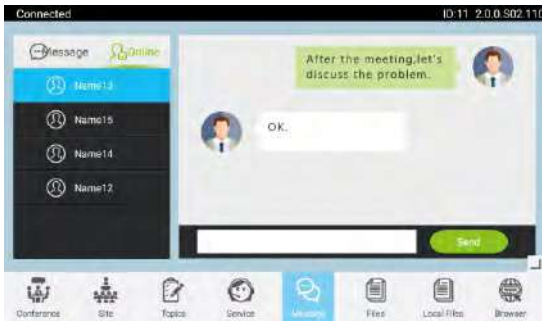
**Voting result interface:** when the paperless chairman terminal ends the voting, the results will be displayed on each paperless terminal.



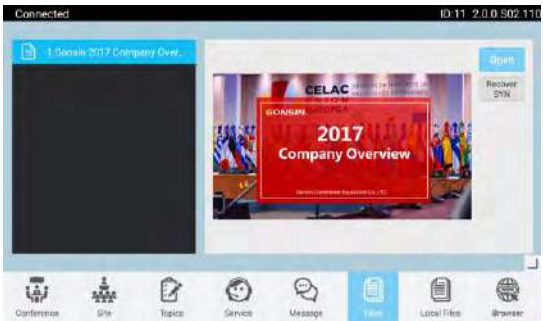
**Paperless call service interface:** click the corresponding button and submit, the call service terminal can receive the request, the service personnel will send what the user asks for.



**Service Terminal Interface:** Service staff can provide the service in according to the service content displayed on the corresponding seat, after the terminal receives the request.



**Internal message:** participants can send internal messages to communicate by this module.



**Conference file management interface:** chairman/delegate terminal can browse local files and initiate screen sharing to make all participants read the same content. The local files can be saved into the paperless terminal by a technician before conference.



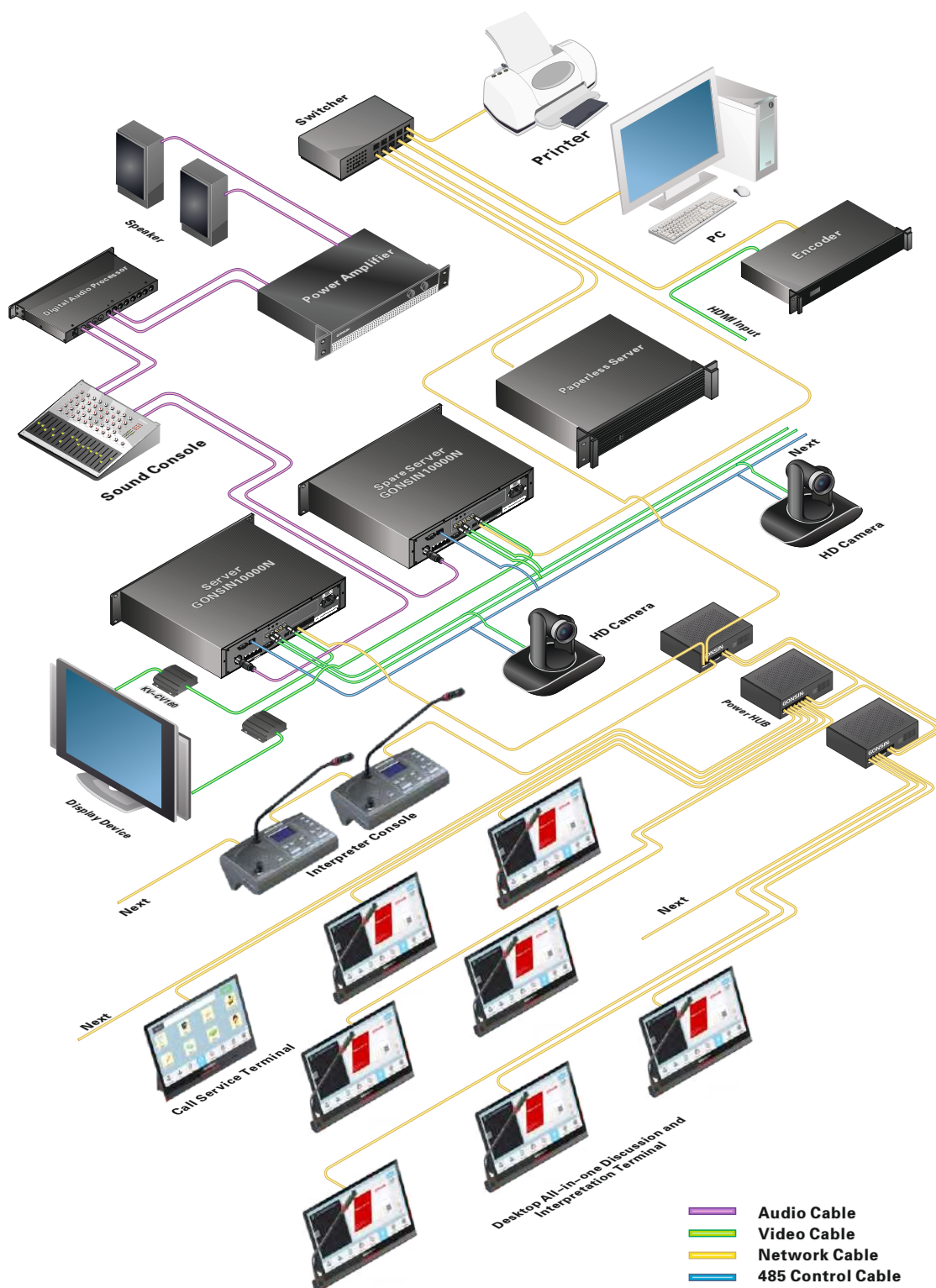
**Screen sharing interface:** after a user initiates the screen sharing, all paperless terminal can display the same interface simultaneously, the initiator can make notes in the terminal.



**Files management:** support import or export files from SD card and USB flash disk, supports files operation(copy, cut, rename, delete)



# System Configuration



GONSIN CONFERENCE EQUIPMENT CO.,LTD.  
[www.gonsin.com](http://www.gonsin.com)



B01

All rights reserved. The information and specifications included are subject to change without prior notice.