



Paperless Conference System

Touch Control LCD Lifting Terminal



Basic functions

Microphone

- ◆ Work with chairman/delegate connector;
- ◆ Auto straightening for mic when lifting down;
- ◆ Microphone discussion modes: Operator/Auto/ FIFO/ VOX/ Request to speak(with software);
- ◆ Unlimited number of chairman units or vice chairman units;
- ◆ In VOX mode, microphones will be activated as users speak. VOX sensitivity (high/middle/low) and mic time-out can be adjusted by the server. Besides the chairman unit, 4 delegate unit can be activated at the same time;
- ◆ Electret cardioid directional microphone brings better sound quality;
- ◆ Highly resistant to mobile phone interference
- ◆ Auto camera tracking with preset panoramic position; SD/HD camera tracking is supported;
- ◆ Expansion function: can be connected with voting module and simultaneous interpretation module
- ◆ The system supports auto repairing and hot sweeping;
- ◆ Co-work with software, speaking time can be managed based on situation

Touch Control LCD Lifter

- ◆ Separated lifting design for LCD screen and mic, with panel keys control lifting of both, flexible and easy to operate; easy to hide and store the equipment;
- ◆ The front screen is a 15.6/17.3/18.5 inch IPS full-view HD LCD screen(resolution 1920×1080) with 10 points touch; suit for paperless terminal;
- ◆ Utilize low-speed micro-motor cooperate with high-quality timing belts and high-precision guide rails and bearings, enabling fast and smooth lifting; wear-resisting design secures long service life;
- ◆ Low noise design produces low noise during lifting;
- ◆ The default elevation angle is 15° when the LCD screen is lifted; support continuous adjustment within 0-30°;
- ◆ Lifter panels and chassis are made of aluminum alloy with light weight, high strength and exquisite appearance;
- ◆ Slim design with narrow bezel, the suitable 16:9 display scale provides a superior users viewing experience.
- ◆ Support 10 points touch, stable and sensitive;
- ◆ Lifter panel has switches for: Up, Stop, Down, on and off for multimedia conference terminal;
- ◆ The lifter supports manual control, wireless remote control, RS-232 control, RS-485 control, carrying out unified control and grouping control for up/down/stop status of lifter
- ◆ Support reading files from USB flash disk;
- ◆ With HDMI and VGA interface, signals can be automatically identified, and can be switched by panel keys, when there is no signal input, the screen automatically enters the power saving mode.
- ◆ Support personalized customization: the voting module, simultaneous interpretation module, charging module and other modules can be customized. The integrated panel does not affect the appearance of the desktop.
- ◆ The lifter has a power loop outlet socket, which reduces power wiring and makes the scene more tidy and beautiful.

Technical Parameters

Model	GX-LF156CD-X	GX-LF173CD-X	GX-LF185CD-X
	GX-LF156CX-X	GX-LF173CX-X	GX-LF185CX-X
	GX-LF156ED-X	GX-LF173ED-X	GX-LF185ED-X
	GX-LF156EX-X	GX-LF173EX-X	GX-LF185EX-X
Microphone			
Type	Cardioid directional electret		
Frequency response	20Hz~20kHz		
Max SPL	125 dB (THD<3%)		
Dynamic range	>85dB		
VOX sensitivity	H/M/L(76dB/80dB/82dB)		
Sensitivity	-46dB±4dB		
THD	<0.05%		
SNR	≥96dB		
Mic length	450mm		
Front LCD Screen			
Screen size	375×250mm	406×265mm	446×285mm
Thickness	5mm(the thinnest)/8mm(the thickest)		10.5mm
Resolution ratio	1920×1080dpi		
Brightness	220cd/m²	300cd/m²	260cd/m²
Contrast	800: 1		
Screen visual angle	85°/85°/85°/85°(up/down/left/right)		
Display interface	HDMI+VGA, auto recognition/switch through panel key		
Touch screen(the front LCD screen equips)			
Type	Capacitive touch, 10 points touch		
Surface hardness	7H		
Antistatic Contact discharge	4KV		
Screen transparency	>90%		
Response time	<5ms		
Touch life	> 50 million times		
Lifter			
Lifting up/down time	30s		
Screen elevation angle	Default 15°, adjustable within 0~30°		
Control mode	Manual control, wireless remote control, RS-232 control, RS-485 control		
Communication distance	Wireless remote control: 30m, RS-232 control, RS-485 control: 1200m		
Universal specifications			
Color	Sandblasted Black / Silver ; Brushed Black / Silver (customizable)		
Material	Aluminum alloy panel + aluminum alloy chassis		
Power	Voltage AC220V±10% 50Hz (AC 110V customizable)		
Maximum power	25W		
Operating temperature	0~45°C		
Panel dimension	555×70×3mm	601×70×3mm	629.5×70×3mm
Case size	539×60×647mm	585×60×647mm	615×60×716mm
Package size(carton)	608×132×750mm	660×132×750mm	690×132×815mm
Net Weight	14kg	15kg	16kg
Gross weight	16.5kg	17.5kg	17.5kg

Dual Screen Touch Control LCD Lifting Terminal



Basic functions

Microphone

- ◆ Work with chairman/delegate connector;
- ◆ Auto straightening for mic when lifting down;
- ◆ Microphone discussion modes: Operator/Auto/ FIFO/ VOX/ Request to speak(with software);
- ◆ Unlimited number of chairman units or vice chairman units;
- ◆ In VOX mode, microphones will be activated as users speak. VOX sensitivity (high/middle/low) and mic time-out can be adjusted by the server. Besides the chairman unit, 4 delegate unit can be activated at the same time;
- ◆ Electret cardioid directional microphone brings better sound quality;
- ◆ Highly resistant to mobile phone interference
- ◆ Auto camera tracking with preset panoramic position; SD/HD camera tracking is supported;
- ◆ Expansion function: can be connected with voting module and simultaneous interpretation module
- ◆ The system supports auto repairing and hot sweeping;
- ◆ Co-work with software, speaking time can be managed based on situation

Touch Control LCD Lifter

- ◆ Separated lifting design for LCD screen and mic, with panel keys control lifting of both, flexible and easy to operate; easy to hide and store the equipment;
- ◆ The front screen is a 15.6/17.3/18.5 inch IPS full-view HD LCD screen(resolution 1920×1080) with 10 points touch; suit for paperless terminal;
- ◆ Utilize low-speed micro-motor cooperate with high-quality timing belts and high-precision guide rails and bearings, enabling fast and smooth lifting; wear-resisting design secures long service life;
- ◆ Low noise design produces low noise during lifting;
- ◆ The default elevation angle is 15° when the LCD screen is lifted; support continuous adjustment within 0-30°;
- ◆ Lifter panels and chassis are made of aluminum alloy with light weight, high strength and exquisite appearance;
- ◆ Slim design with narrow bezel, the suitable 16:9 display scale provides a superior users viewing experience.
- ◆ Support 10 points touch, stable and sensitive;
- ◆ Lifter panel has switches for: Up, Stop, Down, on and off for multimedia conference terminal;
- ◆ The lifter supports manual control, wireless remote control, RS-232 control, RS-485 control, carrying out unified control and grouping control for up/down/stop status of lifter
- ◆ Support reading files from USB flash disk;
- ◆ With HDMI and VGA interface, signals can be automatically identified, and can be switched by panel keys,when there is no signal input, the screen automatically enters the power saving mode.
- ◆ Electronic nameplate: the back screen equips 11.6 inches super bright HD LCD screen(resolution 1366×768);16:9 display ratio for better and higher-quality image display.
- ◆ Display user's information synchronously, such as user's name/position or title/organization name/ Logo and etc.; support font/ background/ customized template.
- ◆ Support personalized customization: the voting module, simultaneous interpretation module, charging module and other modules can be customized. The integrated panel does not affect the appearance of the desktop.
- ◆ The lifter has a power loop outlet socket, which reduces power wiring and makes the scene more tidy and beautiful.

Technical Parameters

Model	GX-LF156DD-X	GX-LF173DD-X	GX-LF185DD-X
	GX-LF156DX-X	GX-LF173DX-X	GX-LF185DX-X
	GX-LF156FD-X	GX-LF173FD-X	GX-LF185FD-X
	GX-LF156FX-X	GX-LF173FX-X	GX-LF185FX-X
Microphone			
Type	Cardioid directional electret		
Frequency response	20Hz~20kHz		
Max SPL	125 dB (THD<3%)		
Dynamic range	>85dB		
VOX sensitivity	H/M/L(76dB/80dB/82dB)		
Sensitivity	-46dB±4dB		
THD	<0.05%		
SNR	≥96dB		
Mic length	450mm		
Back LCD Screen			
Display size	11.6 inches,256mm(H)×144mm(V)		
Resolution ratio	1366×768dpi		
Brightness	300cd/		
Contrast	600:1		
Screen visual angle	85°/85°/85°/85°(up/down/left/right)		
Front LCD Screen			
Screen size	375×250mm	406×265mm	446×285mm
Thickness	5mm(the thinnest)/16mm(the thickest)		10.5mm
Resolution ratio	1920×1080dpi		
Brightness	220cd/m²	300cd/	260cd/m²
Contrast	800: 1		
Screen visual angle	85°/85°/85°/85°(up/down/left/right)		
Display interface	HDMI+VGA, auto recognition/switch through panel key		
Touch screen(the front LCD screen equips)			
Type	Capacitive touch, 10 points touch		
Surface hardness	7H		
Antistatic Contact discharge	4KV		
Screen transparency	>90%		
Response time	<5ms		
Touch life	> 50 million times		
Lifter			
Lifting up/down time	LCD 30s ; MIC 50s		
Screen elevation angle	Default 15°, adjustable within 0~30°		
Control mode	Manual control, wireless remote control, RS-232 control, RS-485 control		
Communication distance	Wireless remote control: 30m; RS-232: 15m ; RS-485 : 1200m		
Universal specifications			
Color	Sandblasted Black / Silver ; Brushed Black / Silver (customizable)		
Material	Aluminum alloy panel + aluminum alloy chassis		
Power	Voltage AC220V±10% 50Hz (AC 110V customizable)		
Maximum power	25W		
Operating temperature	0~45°C		
Panel dimension	555×70×3mm	601×70×3mm	629.5×70×3mm
Case size	539×60×647mm	585×60×647mm	615×60×716mm
Package size(carton)	608×132×750mm	660×132×750mm	690×132×815mm
Net Weight	14.2kg	15.2kg	16.2kg
Gross weight	16.7kg	17.7kg	19.2kg

Touch Control LCD Lifter

Basic functions

- ◆ Separated lifting design for LCD screen and mic, with panel keys control lifting of both, flexible and easy to operate; easy to hide and store the equipment;
- ◆ The front screen is a 15.6/17.3/18.5 inch IPS full-view HD LCD screen(resolution 1920×1080) with 10 points touch; suit for paperless terminal
- ◆ Utilize low-speed micro-motor and strengthened wire rope gearing, enabling fast and smooth lifting; wear-resisting design secures long service life;
- ◆ Low noise design produces low noise during lifting;
- ◆ The default elevation angle is 15° when the LCD screen is lifted; support continuous adjustment within 0~30°;
- ◆ Lifter panels and chassis are made of aluminum alloy with light weight, high strength and exquisite appearance;
- ◆ Slim design with narrow bezel, the suitable 16:9 display scale provides a superior users viewing experience.
- ◆ Support 10 points touch, stable and sensitive;
- ◆ Lifter panel has switches for: Up, Stop, Down, on and off for multimedia conference terminal;
- ◆ The lifter supports manual control, wireless remote control, RS-232 control, RS-485 control, carrying out unified control and grouping control for up/down/stop status of lifter
- ◆ Support reading files from USB flash disk;
- ◆ With HDMI and VGA interface, signals can be automatically identified, and can be switched by panel keys.



Technical Parameters

Model	GX-LF156-X	GX-LF173-X	GX-LF185-X
Front LCD Screen			
Screen size	375×250mm	406×265mm	446×285mm
Thickness	5mm(the thinnest)/8mm(the thickest)		10.5mm
Resolution ratio	1920×1080dpi		
Brightness	220cd/m ²	300cd/m ²	260cd/m ²
Contrast	800: 1		
Screen visual angle	85°/85°/85°/85°(up/down/left/right)		
Display interface	HDMI+VGA, auto recognition/switch through panel key		
Touch screen(the front LCD screen equips)			
Type	Capacitive touch, 10 points touch		
Surface hardness	7H		
Antistatic Contact discharge	4KV		
Screen transparency	>90%		
Response time	<5ms		
Touch life	> 50 million times		
Lifter			
Lifting up/down time	30s		
Screen elevation angle	Default 15°, adjustable within 0~30°		
Control mode	Manual control, wireless remote control, RS-232 control, RS-485 control		
Communication distance	Wireless remote control: 30m, RS-232 control, RS-485 control: 1200m		
Universal specifications			
Color	Silver/Black(customizable)		
Material	Aluminum alloy panel + aluminum alloy chassis		
Power	Voltage AC220V±10% 50Hz (AC 110V customizable)		
Maximum power	25W		
Operating temperature	0~45°C		
Panel dimension	430×70×3mm	476×70×3mm	510×70×3mm
Case size	415×60×562mm	461×60×562mm	495×60×647mm
Package size(carton)	488×132×660mm	538×132×660mm	565×132×745mm
Net Weight	7kg	8kg	9kg
Gross weight	9kg	10kg	11.5kg

Dual Screen Touch Control LCD Lifter

Basic functions

- ◆ Separated lifting design for LCD screen and mic, with panel keys control lifting of both, flexible and easy to operate; easy to hide and store the equipment;
- ◆ The front screen is a 15.6/17.3/18.5 inch IPS full-view HD LCD screen(resolution 1920×1080) with 10 points touch; suit for paperless terminal
- ◆ Utilize low-speed micro-motor and strengthened wire rope gearing, enabling fast and smooth lifting; wear-resisting design secures long service life;
- ◆ Low noise design produces low noise during lifting:
- ◆ The default elevation angle is 15° when the LCD screen is lifted; support continuous adjustment within 0~30°;
- ◆ Lifter panels and chassis are made of aluminum alloy with light weight, high strength and exquisite appearance;
- ◆ Slim design with narrow bezel, the suitable 16:9 display scale provides a superior users viewing experience.
- ◆ Support 10 points touch, stable and sensitive;
- ◆ Lifter panel has switches for: Up, Stop, Down, on and off for multimedia conference terminal;
- ◆ The lifter supports manual control, wireless remote control, RS-232 control, RS-485 control, carrying out unified control and grouping control for up/down/stop status of lifter
- ◆ Support reading files from USB flash disk;
- ◆ With HDMI and VGA interface, signals can be automatically identified, and can be switched by panel keys.
- ◆ Electronic nameplate: the back screen equips 11.6 inches super bright HD LCD screen(resolution 1366×768);16:9 display ratio for better and higher-quality image display.
- ◆ Display user's information synchronously, such as user's name/position or title/organization name/ Logo and etc.; support font/ background/ customized template.



Technical Parameters

Model	GX-LF156B-X	GX-LF173B-X	GX-LF185B-X
Front LCD Screen			
Screen size	375×250mm	406×265mm	446×285mm
Thickness	5mm(the thinnest)/8mm(the thickest)		
Resolution ratio	1920×1080dpi		
Brightness	220cd/m²	300cd/m²	260cd/m²
Contrast	800: 1		
Screen visual angle	85°/85°/85°/85°(up/down/left/right)		
Display interface	HDMI+VGA, auto recognition/switch through panel key		
Back LCD Screen			
Display size	11.6 inches,256mm(H)×144mm(V)		
Resolution ratio	1366×768dpi		
Brightness	300cd/m²		
Contrast	600:1		
Screen visual angle	85°/85°/85°/85°(up/down/left/right)		

Model	GX-LF156B-X	GX-LF173B-X	GX-LF185B-X
Touch screen(the front LCD screen equips)			
Type	Capacitive touch, 10 points touch		
Surface hardness	7H		
Antistatic Contact discharge	4KV		
Screen transparency	>90%		
Response time	<5ms		
Touch life	> 50 million times		
Lifter			
Lifting up/down time	30s		
Screen elevation angle	Default 15°, adjustable within 0~30°		
Control mode	Manual control, wireless remote control, RS-232 control, RS-485 control		
Communication distance	Wireless remote control: 30m, RS-232 control, RS-485 control: 1200m		
Universal specifications			
Color	Silver/Black(customizable)		
Material	Aluminum alloy panel + aluminum alloy chassis		
Power	Voltage AC220V±10% 50Hz (AC 110V customizable)		
Maximum power	25W		
Operating temperature	0~45°C		
Panel dimension	430×70×3mm	476×70×3mm	510×70×3mm
Case size	415×60×562mm	461×60×562mm	495×60×647mm
Package size(carton)	488×132×660mm	538×132×660mm	565×132×745mm
Net Weight	7.2kg	8.2kg	9.2kg
Gross weight	9.2kg	10.2kg	11.7kg

Microphone Lifting All-in-one Terminal

GX-LFM2057X-X/GX-LFM2057D-X

Basic functions

- ◆ Work with connectors of chairman unit DCS-CON2057X and delegate unit DCS-CON2057D (GX-LFM2057X-X/GX-LFM2057D-X)
- ◆ Auto straightening for MIC when lifting down
- ◆ 5 modes of microphone discussion : Apply for waiting /Restrict to speak/ FIFO/ VOX/ Request to speak(with software)
- ◆ In VOX mode, microphones will be activated as users speak. VOX sensitivity (high/middle/low) and MIC time-out can be adjusted by the server. It can be automatically turned off by setting in advance. Besides the chairman unit, 4 delegate units can be activated at the same time.
- ◆ Electret cardioid directional microphone brings better sound quality.



- ◆ Highly resistant to mobile phone interference
- ◆ Auto camera tracking with preset panoramic position; SD/HD camera tracking is supported
- ◆ The system supports auto repairing and hot sweeping
- ◆ Co-work with software, speaking time can be managed based on situation

Based on the functions of delegate unit, chairman unit has the functions below:

- ◆ Chairman unit can be turned on freely without restriction on the number of microphones when turning on.
- ◆ Chairman unit has the priority function that can interrupt or turn off the delegate unit when speaking.

◆ Technical Parameters

Microphone	
Type	Cardioid directional electret
Frequency response	20Hz~20kHz
Max SPL	125dB(THD<3%)
Dynamic range	>85dB
VOX sensitivity	H/M/L(76dB/80dB/82dB)
Sensitivity	-46dB±4dB
THD	<0.05%
SNR	≥96dB
MIC length	450mm
Lifter	
Lifting up/down time	54s
Control mode	Manual control, wireless remote control, RS-232 control, RS-485 control
Communication distance	wireless remote control:30m; RS-232: 15m; RS-458: 1200m
General parameters	
Color	Sandblasting silver (other colors can be customized)
Material	Aluminum alloy
Power	Voltage AC220V±10%50Hz(AC110V customizable)
Max Power	25W
Working temperature	0~45°C
Storage temperature	-20~50°C
Relative humidity	Not more than80%(20°C environment)
Product size	160×70×720mm
Panel size	160×70×3mm
Case size	143×60×717mm
Package size	835×250×145mm(carton)
Net weight	3kg
Gross weight	4kg

Lifting Controller GX-TP40-D



Basic functions

- ◆ Built-in lifter control program, which can control the lifter uniformly
- ◆ 86 box design, easy to install
- ◆ No operating system, with Android display effects and experience
- ◆ 480×480 resolution
- ◆ Capacitive touch
- ◆ 5-36V power supply
- ◆ RS485 communication mode
- ◆ The product size:90.80×90.80×27.65mm

Technical Specifications

Screen size	4"
Resolution	480×480
color	65K colors, 16-bit RGB
Display type	TFT LCD
Brightness	250cd/m ²
Backlight tube	led
Backlight life (average)	>20,000 hours
Contrast	800:01:00
Perspective	80/80/80/80
Installation method	National standard 86 bottom box
Communication Interface	Rs485
Touch	Capacitive touch screen
Number of touches	unlimited
Power consumption	Sleep: 0.4W; the darkest without speaker: 1.5W; the brightest without speaker: 2.4W
Voltage input	9~36V
Operating temperature	0~40℃
Storage temperature	-20~+70℃
Size (W×D×H)	90.80×90.80×27.65mm
Net weight	90g



Connector

DCS-CON2057X/DCS-CON2057D



Basic functions

- ◆ In compliance with IEC60914 international standard, utilize digital audio processing and transmission technology
- ◆ Co-work with Microphone Lifting All-in-one Terminal
- ◆ Realize the communication between basic discussion module and the server
- ◆ Connector, basic discussion module, power HUB and congress server are all connected by cable. Flexible cabling reduces project workload, makes large-scale construction easier.
- ◆ It supports daisy-chain connection, star connection and mixed connection. The system is highly stable and reliable. The break down of one extension won't influence the other extensions, and the malfunction of one attachment among the extensions won't influence the system work.
- ◆ Automatic restoration function: supports hot plug.
- ◆ When there is only basic discussion module, it requires the connectors; when the basic discussion, module is extended to other terminal, it do not require the connector.



Technical Specifications

Panel Dimension(L×W×H)	140×40×130mm
Color	Black
Interface	3×RJ45 Connector
Power Supply	DC 24V, POWER BY Sever/HUB
Max Power Consumption	6.4W
Weight	0.6kg
Operating Temperature	0~45°C
Storage Temperature	-20~50°C

Note: The introduction of GONSIN 20000S conference system sever, please refer to the brochure of DCS-2057 Flush-Mounting backup conference system.

Connector

DCS-CON2062D



Basic functions

- ◆ Co-work with Touch Control LCD chairman/delegate lifter to realize discussion functions
- ◆ Support independent adapter to supply power and GONSIN20000S system distributed power and intelligent grouping management
- ◆ Conference terminal, power HUB and conference server are all connected by net cable. Flexible cabling reduces project workload, makes large-scale construction easier.
- ◆ It supports daisy-chain connection, star connection and mixed connection. The system is highly stable and reliable. The break down of one extension won't influence the other extensions, and the malfunction of one attachment among the extensions won't influence the system work.
- ◆ Automatic restoration function: supports hot plug.

Paperless Terminal Connector Configuration

- ◆ Attendance registration function: registration is initiated and ended by paperless terminal(chairman), the results can be displayed on LCD screen.
- ◆ Voting function: started and ended by paperless terminal(chairman), the results can be display on LCD screen.
- ◆ Customized voting function: The paperless terminal(chairman) can initiate and end the customized voting, voting results can be displayed on paperless terminal. The voting content is defined by GONSIN Intelligent Conference management software.
- ◆ Call service: participants place a call via paperless terminal. The service staff will provide the service in according to the request displayed on the paperless call service terminal. Basic functions: paper, pen, tea, towel and etc, the functions can be customized.
- ◆ Browsing conference files: before the conference, the digital files could be preset on the paperless terminal, the user could open and browse the files; it supports DOC, DOCX, PDF, PPT, PPTX, JPG, PNG, BMP, MP3, MP4, AVI, FLV, WMV and other format files. Files can be displayed in screen sharing status.
- ◆ Sharing screen: when the user is browsing the files via paperless terminal, it can share the screen and other terminals could display the same content, including page scroll, paging, notes and others operation.
- ◆ Files note function: users can make notes on files, notes can be saved in the server.
- ◆ Screen sharing and synchronizing screen function: user can initiate screen sharing, all terminals will be displayed the same content; After exit from the sharing screen, user can synchronize the screen to the sharing one manually. The sharing content can be displayed on other display device simultaneously.
- ◆ Support internal messages function, user can communicate via sending internal messages
- ◆ Support digital whiteboard function, user can create whiteboard quickly, the content will be saved in the server.
- ◆ Support surfing the internet via the browser.
- ◆ Support reading files from USB flash disk
- ◆ Support connection to exterior video by code
- ◆ System capacity: unlimited(wired connection)
- ◆ The serial-number is one and only, the conference system supports automatically or manually assign ID to the corresponding equipment.

- ◆ Randomly set any one terminal as Chairman Terminal

More functions of The Paperless Chairman Terminal are as below.

- ◆ Support sending mass system messages to all paperless delegate terminals.
- ◆ Support managing the conference topic, allow user to initiate the registration and voting.
- ◆ Allow user to initiate quick voting
- ◆ Support mandatory sharing screen
- ◆ Check conference information, such as voting process and result, call service information, screen sharing information and etc.

Discussion System

- ◆ With headphone jack (Ø 3.5 mm) and adjustable volume (9 levels).
- ◆ Built-in MIC (Ø 3.5 mm) to connect with external MIC, which meets the requirements of different usage scenarios.
- ◆ Supports 48kHz audio sample freq, acoustic frequency response can up to 20Hz~20kHz.
- ◆ AF sensitivity of each terminal (7 levels) can be adjusted separately or uniformly.
- ◆ Built-in high-performance DSP digital audio processor, helps remove the useless low-frequency and avoid low-frequency acoustical shock, which better improve the sharpness of sound.
- ◆ Microphone modes: VOX, Auto, FIFO, Operator.
- ◆ VOX mode: in VOX mode, the unit will be activated for user speaks; VOX sensitivity can be adjust by the server (high, middle, low); microphone time-out is adjustable (20-250 seconds).
- ◆ 1-4 delegate unit can be used except the chairman unit
- ◆ Supports automatic video tracking (SD and HD), with preset panoramic position. Perfect matched with camera or plug-in video.
- ◆ Support 32 (1+31) channels simultaneous interpretation
- ◆ Select interpretation channel and adjust volume on paperless LCD screen
- ◆ Acoustic frequency response can up to 20Hz~20kHz.

More functions of The Paperless Chairman Terminal are as below.

- ◆ Chairman terminal can be activated at any time without presetting mic limit
- ◆ Chairman priority button to override all active delegate terminals

◆ Technical Parameters

Universal Specifications

Installation	Hidden Installation
Connection Method	Cable
System	Android
Dominant Frequency	1.8G
Memory	2G, DDR3
Internal Storage Capacity	8GB
Interface	USB×3/HDMI×2/RJ45×2/ 3.5 mm stereo jack×1
Power	24V
Power Supply	Adapter/Server/Power HUB
Max Power Consumption	25W
Operating Temperature	0~45°C
Storage Temperature	-20~50°C

Discussion

Frequency Response	20Hz~20kHz
Sensitivity	-46 dBV/Pa
VOX Sensitivity	H/M/L(76dB/80dB/82dB)
db	20dBA(SPL)
Max SPL	125dB(THD<3%)
THD	<0.05%
SNR	≥96dB

Simultaneous Interpretation

Frequency Response	20Hz~20kHz
THD	(THD)<0.3%
SNR	≥95dB
Channel	32channel

Paperless Terminal GX-PET302A

Basic functions

- ◆ In compliance with IEC60914 international standard,utilize digital audio processing and transmission technology
- ◆ Co-work with touch control LCD lifter to realize paperless terminal functions
- ◆ Attendance registration function: registration is initiated and ended by paperless terminal(chairman), the results can be displayed on LCD screen.
- ◆ Voting function:started and ended by paperless terminal(chairman), the results can be display on LCD screen.
- ◆ Customized voting function: The paperless terminal(chairman) can initiate and end the customized voting, voting results can be displayed on paperless terminal. The voting content is defined by GONSIN Intelligent Conference management software.
- ◆ Call service: participants place a call via paperless terminal. The service staff will provide the service in according to the request displayed on the paperless call service terminal. Basic functions: paper,pen, tea, towel and etc, the functions can be customized.
- ◆ Conference digital file management function, include browsing conference files and sharing screen
- ◆ Browsing conference files: before the conference, the digital files could be preset on the paperless terminal, the user could open and browse the files; it supports DOC, DOCX, PDF, PPT, PPTX, JPG, PNG, BMP, MP3, MP4, AVI, FLV, WMV and other format files. Files can be displayed in screen sharing status.
- ◆ Sharing screen: when the user is browsing the files via paperless terminal, it can share the screen and other terminals could display the same content, including page scroll, paging, notes and others operation.
- ◆ Files note function: users can make notes on files, notes can be saved in the server.
- ◆ Screen sharing and synchronizing screen function: user can initiate screen sharing, all terminals will be displayed the same content;After exit from the sharing screen, user can synchronize the screen to the sharing one manually. The sharing content can be displayed on other display device simultaneously.
- ◆ Support internal messages function, user can communicate via sending internal messages
- ◆ Support digital whiteboard function, user can create whiteboard quickly, the content will be saved in local.
- ◆ Support surfing the internet via the browser.
- ◆ Support reading files from USB flash disk
- ◆ Support connection to exterior video by code
- ◆ System capacity: unlimited(wired connection)
- ◆ Randomly set any one terminal as Chairman Terminal



More functions of The Paperless Chairman Terminal are as below.

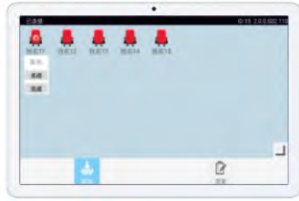
- ◆ Support sending mass system messages to all paperless delegate terminals..
- ◆ Support managing the conference topic, allow user to initiate the registration and voting.
- ◆ Allow user to initiate quick voting
- ◆ Support mandatory sharing screen
- ◆ Check conference information, such as registration and leave, voting process and result, call service information, screen sharing information, Mic on/off situation and etc.

Technical Parameters

Installation	Hidden Installation	Power	12VDC/2A
Connection Method	Cable	Power Supply	Adapter
Color	Black	Max Power Consumption	20W
Operation System	Android	Dimension (L×W×H)	173mm×95mm×30mm
Dominant Frequency	1.8G	Weight	480g
Memory	2G, DDR3	Operating Temperature	0~45°C
Internal Storage Capacity	8GB	Storage Temperature	-20~50°C
Interface	USB×2/HDMI×1/RJ45×1		

Paperless Call Service Terminal

GX-PST403/GX-PST404



GX-PST403



GX-PST404

Basic functions

- ◆ In compliance with IEC60914 international standard
- ◆ Ergonomic design, integrated metal body, micro sand spraying with good touch, high curvature arc closing design on the side for more comfortable holding experience
- ◆ 10.1 inches(GX-PST403), 10.3 inches(GX-PST404), Full HD ,with 1920×1200 high resolution for high quality image display
- ◆ Narrow frame design, more than 80% screen-to-body ratio, with a large screen
- ◆ Caring of eyes with blue light filtering
- ◆ Dual speaker setting, high quality stereo for better restoring the sound details clearly
- ◆ Capacitive touch screen, support ten-point touch control, sensitive operation, providing a good use experience
- ◆ Call service: participants place a call via paperless terminal. The service staff will provide the service in according to the request displayed on the paperless call service terminal. Basic functions: paper, pen, tea, towel and etc, the functions can be customized.
- ◆ Support to check on-site seat : according to the layout of the venue, the on-site seating chart can be displayed, and the service information can be displayed directly on the screen, so that the service personnel can provide services accordingly

Technical Parameters

Product Model	GX-PST403	GX-PST404
Operation System	Android	
CPU	Hisilicon Kirin 710A	MediaTek P22T
RAM	4GB	
ROM	64GB	
Screen	10.1 inches,resolution 1920×1200	10.3 inches,resolution 1920×1200
Screen Type	Full-view IPS capacitive touch screen ; Support ten-points touch	
Connection Mode	2.4G + 5.8G Dual Band WiFi,Bluetooth	
USB Interface	Type-C	
Audio Interface	USB Type-C	3.5mm
Microphone	1	2
Speaker	2	
Rear Camera	500W	1300W
Front Camera	200W	800W
Battery Capacity	5100mAh	7000mAh
System Capacity	One wireless AP supports 35 seats; It can be expanded to 65025 seats by expanding wireless AP	
Local Video Playing Time	Appr.9 hours	Appr.8.5 hours
note: this is based on experiment condition, the actual playing time counts on the practical situation		
Dimension(W×H×T)	240.2mm×159mm×7.55mm	244.2mm×153.3mm×8.15mm
Net Weight	Appr.460g(battery included)	Appr.468g(battery included)
Operating Temperature	0~35°C	
Storage Temperature	-20~45°C	

Paperless Server GX-DS301



Basic functions

- ◆ In compliance with IEC60914 international standard,utilize digital audio processing and transmission technology
- ◆ All the equipment are connected by cable. Flexible cabling reduces project workload, makes large-scale construction easier.
- ◆ Automatic restoration function: supports hot plug.
- ◆ To upload, invoke, store the congress files and other file management
- ◆ To process and manage all data, command code and function setting for paperless system
- ◆ Support paperless congress terminal management
- ◆ Support participant data management, two establishing mode:online, offline
- ◆ Support seat setting, create conference room map, seat arrangement, customized editing
- ◆ Support congress management, create congress agenda, set congress time and place
- ◆ The congress file format supports DOC, DOCX, PDF, PPT, PPTX, XLS, XLSX, JPG, PNG, BMP, MP3, MP4, AVI, FLV, WMV and other general document format
- ◆ Support conference topic management, attendance registration, voting, grading, evaluation, election function, support multi-topic voting and other customized functions.
- ◆ Support customized user interface's color and size, background, style, data connection and others.

Technical Specifications

Mainboard	Intel H81 chipset Industrial Motherboards
CPU	Intel Core i5 Processor,6M Cache, up to 3.20 GHz
Memory	DDRIII 4G
SATA	1TB SATA
Port	1×VGA,2×LAN 1000M/2×USB 3.0/4×USB 2.0/1×AUDIO OUT/1×MIC IN
Ethernet	10/100/1000Mbps, two network port(left effective setting)
Power	AC220V, 300W
Operating Temperature	0~60°C
Storage Temperature	-40~80°C
Structure	heavy steel
Installation	2U cabinet
Dimensions(L×W×H)	428×350×89mm
Weight	9.5kg

Encoder GX-SMI301A-H



Basic functions

- ◆ In compliance with IEC60914 international standard,utilize digital audio processing and transmission technology
- ◆ Support HDMI/CVBS/VGA/YPBPR input, 1 channel 3.5 audio input
- ◆ Support 1920×1080p/1920×1080i/1280×720p/720×576i/720×576p /640×480i and other resolutions
- ◆ Image setting: contrast, brightness, hue, saturation, noise detection,sharpness, smoothing
- ◆ Support RTSP/RTP/RTMP/HTTP/UDP/unicast/multicast protocols(RTMP support user to add user's name and password)
- ◆ Support TCP, UDP, 1000M (RJ45 dual interfaces) transmission, support automatic IP acquisition with DHCP

Technical Specifications

Input Interface	1×HDMI signal input/ 1×VGA signal input/ 1×YPBPR signal input/ 1×CVBS signal/ 1×3.5 audio input/ 1×RJ45 output
Output Interface	1×RJ45 output
Input Resolution	1920×1080p/1920×1080i/1280×720p/720×576i/720×576p /640×480i and others
Coding Standard	H.264
Output Resolution	640×360~1920×1080, 30 frames
Audio Coding	AAC/MP3, 64Kb/s~384Kb/s
Sampling Frequency	32000, 44100, 48000 and etc
IP Output	1×RJ 100M/1000M adaptable ethernetinterface, TS standard flow, dual stream, ONVIF protocol
Network Protocol	Support HTTP, RTSP, RTMP, UDP, multicast, unicast
Power Supply	AC110~220V 50/60Hz
Power Consumption	12W
Dimensions(L×W×H)	430mm×250mm×45mm
Weight	3kg
Operating Temperature	-20℃~ 60℃

◆ GONSIN Intelligent Conference Management Software V7.1.0



GONSIN intelligent conference management software V7.1.0 is a sort of background management software for pre-conference, conference, after-conference periods. It bases on networked and digital design, comes with conference data entry, conference management, conference data analysis and other functions. It also provides simple visual operation interface, supports customized interfaces, is easy to use.

Software can operate on the mainstream WIN7/WIN8/WIN10 operation system, easily realize intelligent and human-friendly effective conference management.

◆ System Features

■ Networked, Digital System Platform

Based on networked and digital design, it connects to conference devices in operation to realize the real-time interaction between management software and device data.

The software is based on modular design, covering a full range of products' functions. It supports customized setting and function modular in according to users' demands.

■ Equipment Management

Users can search and set conference equipment by the software to realize central management. After started up, the software will search to the server device in the network and automatically connect to the server.

■ Intelligent Participants' Data Creation

If there is discontinuous number of conference devices and make it difficult to create participants' data, users can create participants' data with one click.

■ Conference Topic Creation

It supports conference topic creation and topic voting. Users can preset conference topic, edit conference's name, data, place, content and other information, set conference discussion, conference voting and others by conference management software to satisfy the actual conference demands.

■ Data Management After Conference

After the end of conference, users can analyse and manage the data by the software, including data checking, data backup export. The conference content could be printed.



◆ Function Introduction

■ Language Setting

It supports language setting, after the installation, user can Select the cooresponding language. Customized language is supported.

■ Conference Preparation

Support information entry, scuh as equipment management, staff data, camera setting, seating setting, card writer, language setting, conference information, topic, attendees, customize screen and etc.

■ Hold Conference

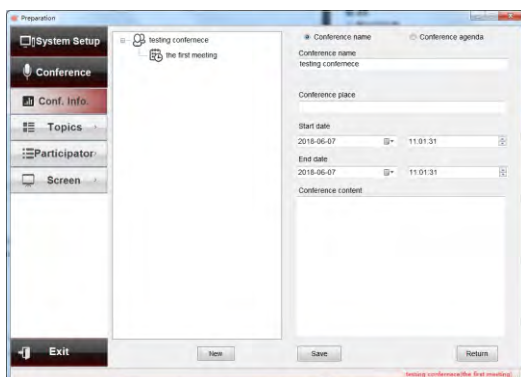
Provide multiple screen display and system control functions, such as attendance registration, topic management, discussion control and etc.

■ After Conference Process

After the end the conference, it begins the after-conference information process, the functions include: conference information saving, delegate information management, attendance registration information management(delegate list, delegate checking, print report and etc), voting results management(voting, evaluation, election, check or print grading results), and others.

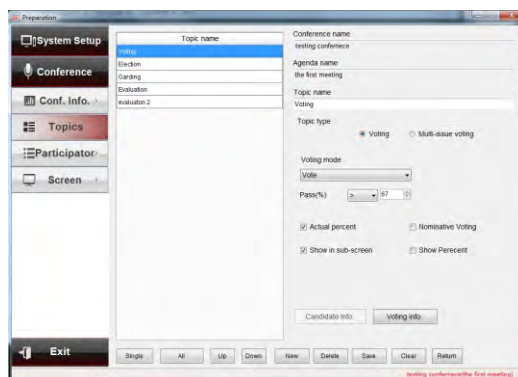
- Compatible with other devices from GONSIN, satisfy the demand for operation of various equipments.

- Network-based design, suitbale for WIN7/WIN8/WIN10 operation system



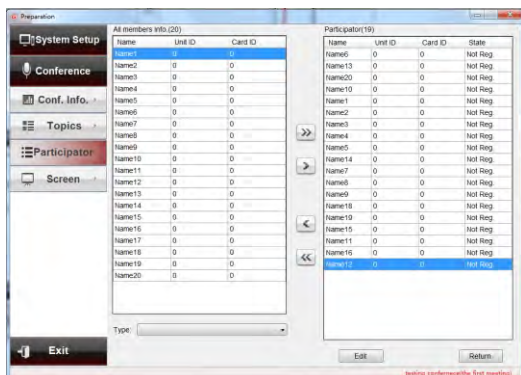
Conference Information:

user can creat a new conference name and relative content, supports editing, deleting conference content.



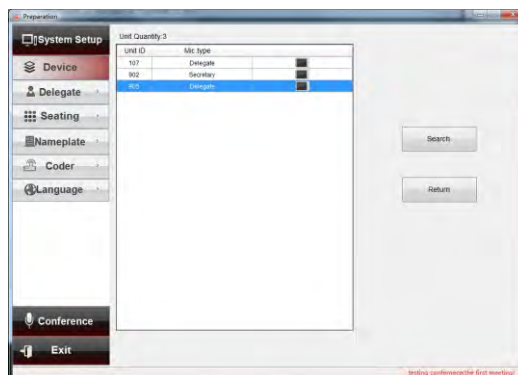
Conference Topic:

users can set the conference topic and relative contents, upload conference files in according to conference agenda.



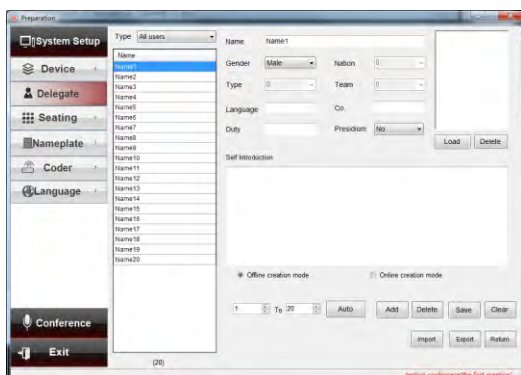
Participants:

user can select the participants from a person list.



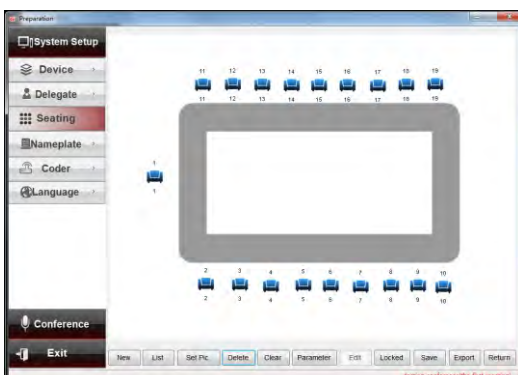
Equipment management:

in this interface, users can search the online equipments.



Person Data:

in according to the online equipments, users can create person data, such as name, gender, position, seat number, and support adding, deleting, clearing of participants' data.



Seat Setting:

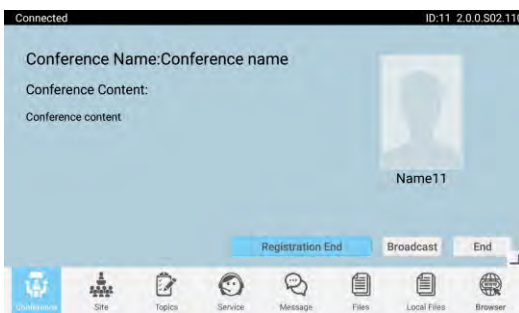
users can set the seats in according to the conference venue, make the management more convenient.

Paperless Conference Terminal Software V2.0

Function Introduction

Paperless conference terminal software can realize digital conference file management, files interaction, checking and sharing. Paperless conference terminal support touch control function, participants can write notes, share the screen. It supports attendance registration, voting, and customized voting, call service, internal message sending and others function within the system. The paperless conference terminal software can appoint any paperless terminal as the chairman/delegate terminal, which make conference management more easier.

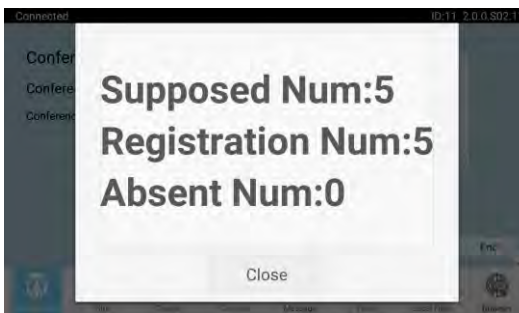
- ◆ Support interface setting for different positions.
- ◆ Support accessible paperless server
- ◆ Support automatic check for updates in each operation
- ◆ Support compatible operation with wired terminals and wireless terminals



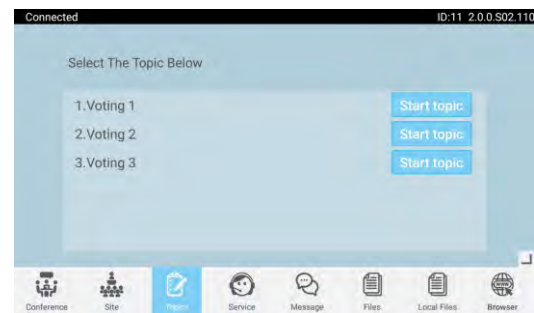
Paerless terminal (chairman) interface: display conference overview, participant's information, initiate registration, send message to all paperless terminals, end conference and etc.



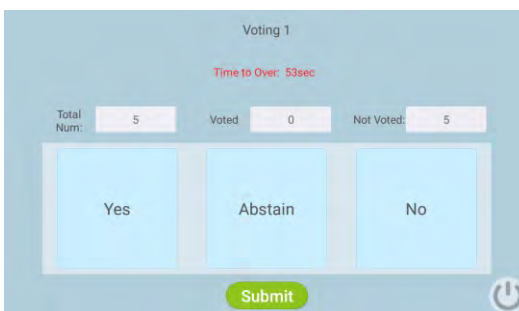
Registration interface: chairmand terminal initiate registration, all paperless terminal can conduct registration



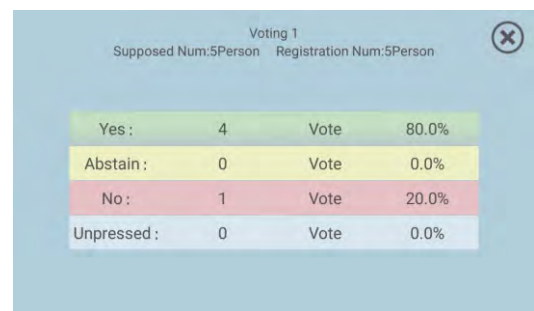
Registration result interface: After registration, all paperless terminals display the registration result



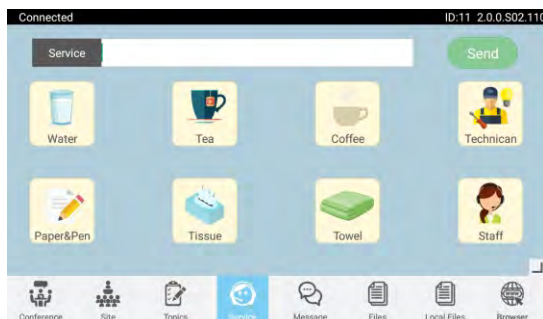
Conference topic interface: display the preset conference topic list, the chairman can initiate voting in according to the agenda, and all terminals will enter the voting interface.



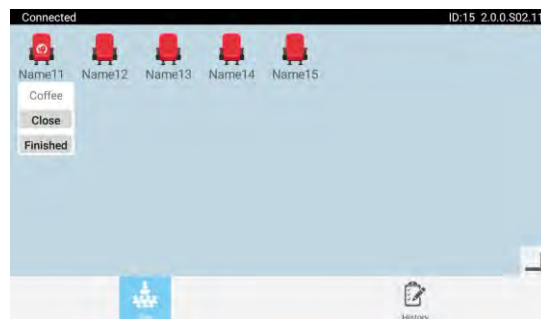
Voting interface: press the corresponding button and submit



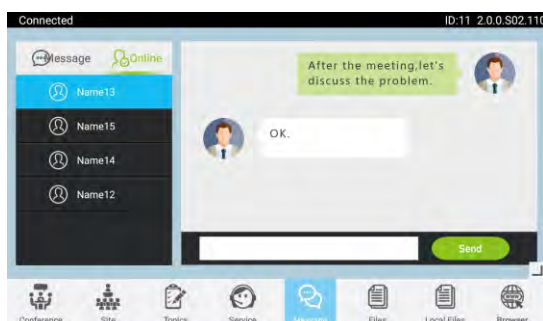
Voting result interface: when the paperless chairman terminal ends the voting, the results will be displayed on each paperless terminal.



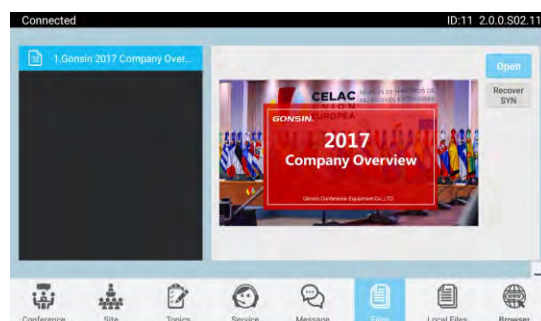
Paperless call service interface: click the corresponding button and submit, the call service terminal can receive the request, the service personnel will send what the user asks for.



Service Terminal Interface: Service staff can provide the service in according to the service content displayed on the corresponding seat, after the terminal receives the request.



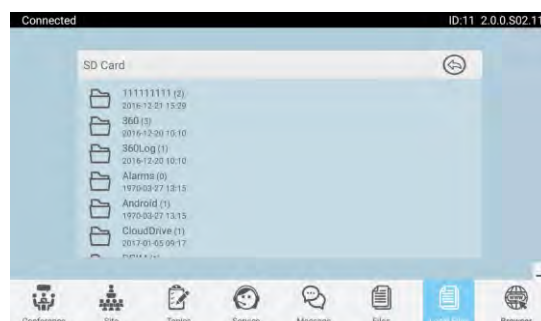
Internal message: participants can send internal messages to communicate by this module.



Conference file management interface: chairman/delegate terminal can browse local files and initiate screen sharing to make all participants read the same content. The local files can be saved into the paperless terminal by a technician before conference.

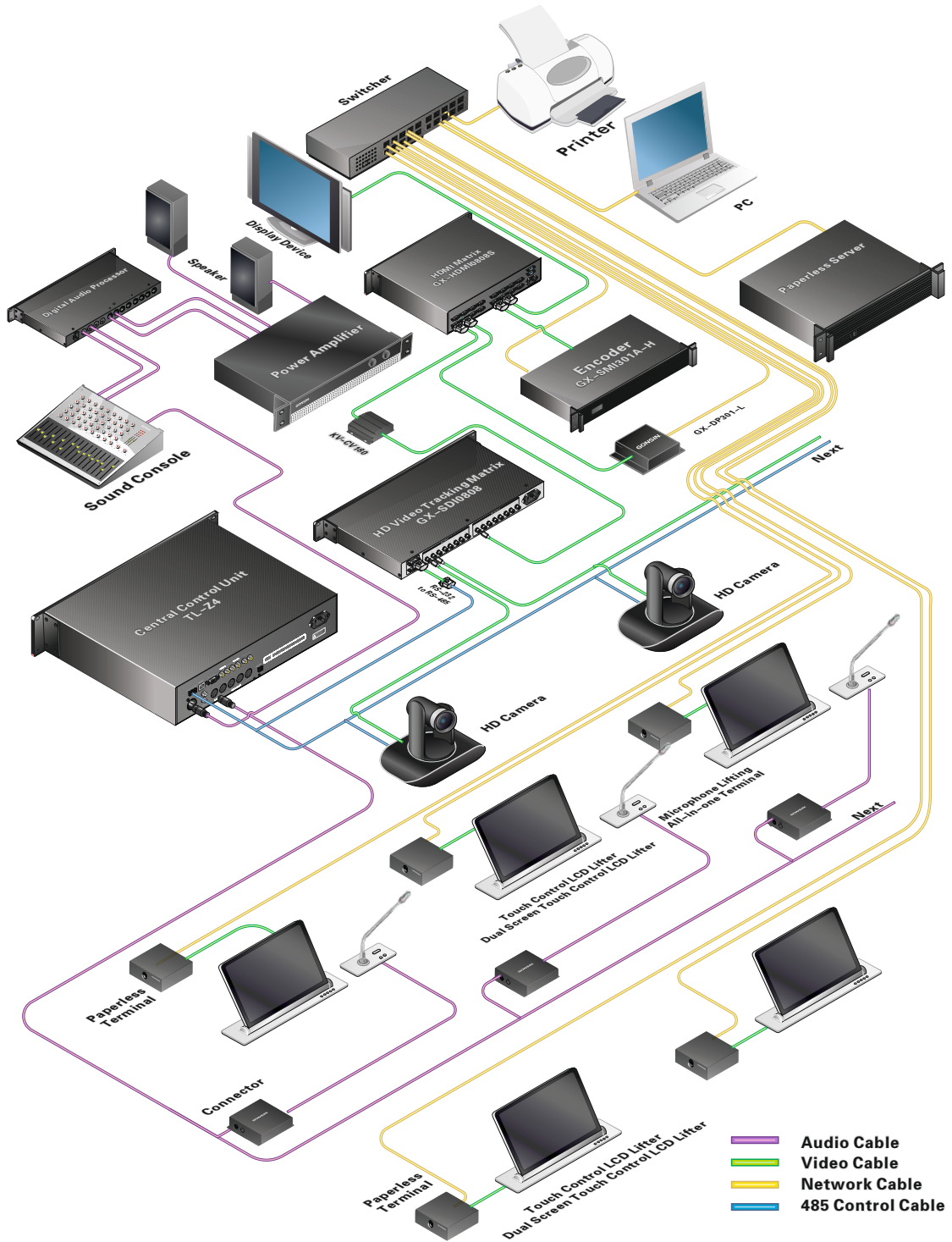


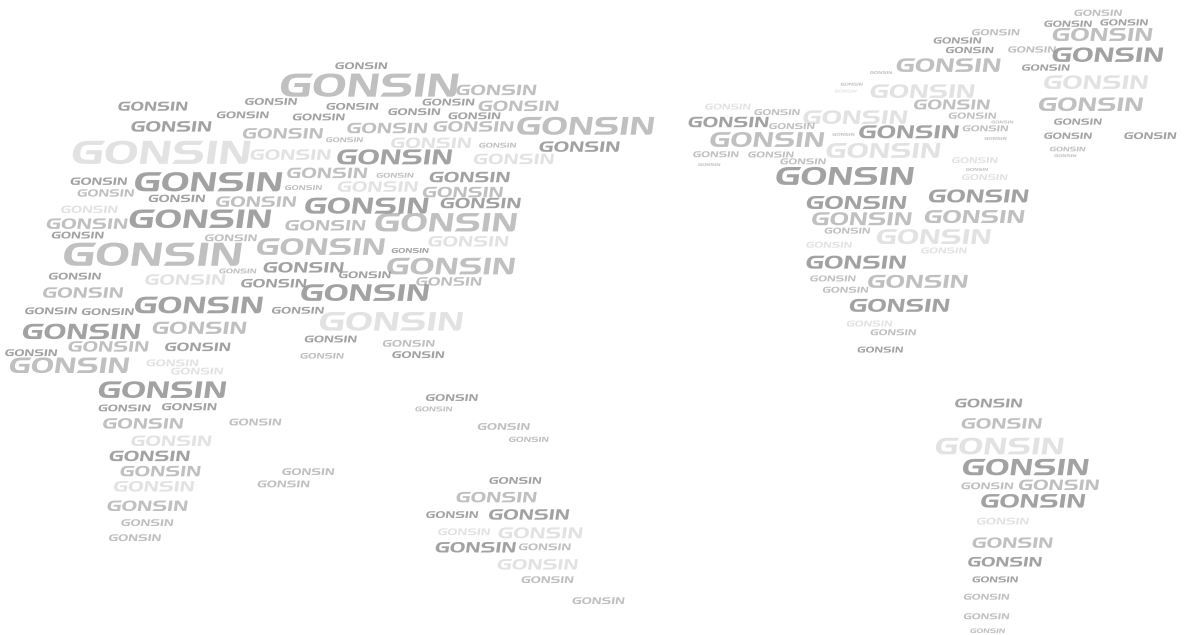
Screen sharing interface: after a user initiates the screen sharing, all paperless terminal can display the same interface simultaneously, the initiator can make notes in the terminal.



Files management: support import or export files from SD card and USB flash disk, supports files operation(copy, cut, rename, delete)

System Configuration





GONSIN CONFERENCE EQUIPMENT CO.,LTD.
www.gonsin.com



English WeChat



A01

All rights reserved. The information and specifications included are subject to change without prior notice.