



# 10000N Series

Seamless Compatible Wired and  
Wireless Conference System

# 10000N Series Seamless Compatible Wired and Wireless Conference System

## ◆ Features

- ◆ With wired and wireless seamless compatible technology, wired conference terminals and wireless conference terminals can be mixed into the same conference server for unified management, data intercommunication, and meet the needs of different users
- ◆ Multiple backup mechanisms ensure the safe, stable and reliable operation of the system, and ensure that the meeting goes on smoothly without being interrupted, satisfying the stringent requirements of high-end meetings for equipment
  - Support dual-server hot stand-by function. When the current server doesn't work, it will automatically switch to the stand-by server
  - Support dual-server hot stand-by function of the management software. When the current computer doesn't work, it will automatically switch to the stand-by computer
  - With a dual-chain backup function of the conference terminal. When the main chain fails, it can be switched to the backup chain for continued use (configured with Rectangular Columnar Short Microphone)
- ◆ Support the application of splitting and merging of the conference room, with 4 channels of audio grouping output, can be split into an independent system using in multiple meeting rooms, or can be used at the same time as the whole system, which is convenient and flexible
- ◆ The wired conference terminal supports star connection, hand-in-hand connection and mixed connection, and all devices are connected by network cables, which is convenient for construction and management
- ◆ The wireless conference terminal supports 2.4G/5.2G/5.8G triple-band communication to ensure system stability
- ◆ With Automatic Speech Recognition System, it can realize the transcription of speech into text by role, and generate meeting minutes, effectively reducing the workload of meeting affairs and improving efficiency



# Triple-band Wireless Congress System

## ◆ Wireless Congress Terminal

DCS-1022-W



### ◆ Basic Functions

- ◆ Confirm to IEC 60914 international standard
- ◆ Stylish and interactive graphical user interface. Metal material, high-end texture
- ◆ With full digital audio technology, built-in high-speed CPU and high-performance DSP digital audio processor
- ◆ Adopt TIFF, HI-FI, low delay transmission technology, support 48kHz audio sample freq
- ◆ AF sensitivity of each terminal can be adjusted separately or uniformly
- ◆ Built-in high-performance DSP digital audio processor, helps remove the useless low-frequency and avoid low-frequency acoustical shock, which better improve the sharpness of sound
- ◆ 4.3-inch TFT true color LCD touch screen to display UI interface, conference information, microphone switch status, battery capacity. Language supports Chinese/ English
- ◆ LCD touch screen with accurate response and long service life, supports full-size touch operation and functions setting: LCD contrast, volume, SSID network setting, language and etc
- ◆ Multiplexing switch terminal button
  - Short press for switching on/off terminal
  - Long press for turning on/off terminal
- ◆ Battery level detection, Low voltage warning and automatic shutdown protection function; terminal automatic turn-off without signal communication in ten minutes
- ◆ In compliance with IEEE 802.11n network standard, adopt WIFI wireless communication technology.
- ◆ Adopt 128 bit AES encryption technology and support WEP/WPA/WPA2 wireless security technology, ensuring the privacy of meetings and avoiding eavesdrop as well as malicious interference
- ◆ Support 2.4G/5.2G/5.8G triple-band wireless communication, choosing the secure wireless channel to ensure the reliability of wireless connection
- ◆ Standard electret cardioid pickup pattern microphone with lamp bezel (On or Off) , rich timbre. Three kinds of soft gooseneck microphone stems for various conferences (standard: 310mm, optional: 410mm/510mm)
- ◆ Pluggable gooseneck microphone stem, convenient for equipment maintenance
- ◆ The terminal supports call service function( tea, paper, pen, help and etc)
- ◆ Terminal battery duration (speaking state) ≥ 17 hours
- ◆ Rechargeable lithium batteries for centralized charging, charging cabinet could charge up to batteries;(MAX 10 lithium batteries at one time.)
- ◆ Highly resistant to mobile phone interference
- ◆ Built-in headphone jack (3.5 mm) and recorder interface (3.5 mm)

- ◆ Built-in loudspeakers (2W) and adjustable volume (7 levels) . Reasonable tune trope design, output clear and loud sound. Adjusting volume through screen touch is available
- ◆ Discussion function: support VOX, Auto, FIFO, Operator, Request and PTT
  - ◆ VOX function: in VOX mode, the unit will be activated for user speaks; VOX sensitivity can be adjust by the server; microphone time-out is adjustable
  - ◆ Auto function: Only the number of microphones limited by the system can be activated. When the number of open microphones is greater than the system limit, press the speaking button, the microphone cannot be turned on, you need to turn off the microphones that have been turned on, and then the microphone can be turned on by pressing the button.
  - ◆ FIFO function: When the number of open microphones is greater than the system limit, press the speak button to turn on and automatically turn off the earliest open microphone
  - ◆ Operator function: When the number of open microphones is greater than the limit, press the speak button to enter the application waiting state. After the opened microphones are closed, the applied microphones will be opened automatically
  - ◆ Request function: In Request, press the speak button and the microphone turns on and release the speech button and the microphone will be turned off
  - ◆ PTT function: the delegate send request-to-speak by terminal, and can speak upon chairman approval. The chairman terminal can be activated anytime without approval
- ◆ 1-3 delegate unit can be used except the chairman unit
- ◆ Attendance registration function: key to register, plug-in card to register(according number),plug-in card to register(non-according number),supplementary register or revocatory register. Attendance is counted automatically and the result can be displayed on the congress terminal
- ◆ Optional HD video camera tracking matrix ,switcher or HD camera, can realize HD automatic camera tracking, supporting preset overall view
- ◆ 8×1+3 video matrix is built in the server, and standard definition video conference camera is selected, which can realize automatic camera tracking function of standard definition and support preset overall view
- ◆ Infrared automatic video camera tracking is optional(HD, MAX 8 cameras )
- ◆ Maximally support 128 wireless APs to achieve greater wireless coverage area and terminal seamless roaming
- ◆ Support SSID WiFi-settings, to ensure non-interference when operating several systems within the same environment
- ◆ The serial-number is one and only, the conference system supports automatically or manually assign ID to the corresponding equipment
- ◆ Appoint any delegate terminal as the vice-chairman terminal

**The chairman terminal has below functions besides the all functions of the delegate terminal.**

- ◆ Chairman terminal can be activated at any time without presetting mic limit
- ◆ Chairman priority button to override all active delegate terminals
- ◆ Could allow the delegate terminal to speak or not

■ **DCS-1022I-W( Discussion Terminal with Interpretation) has below functions besides functions of DCS-1022-W**

- ◆ Support 6 channels wireless simultaneous interpretation
- ◆ As receiving interpretation signal, terminal supports volume adjustment
- ◆ Congress terminals use 4.3-inch TFT true color LCD touch screen
- ◆ Screen touch for selecting interpretation channels
- ◆ Acoustic frequency response can up to 20Hz~20kHz



■ **DCS-1022V-W( Discussion Terminal with Voting) has below function besides functions of DCS-1022-W**

**Offline functions without PC/software control**

- ◆ Attendance registration and voting can be run by the chairman terminal, without PC control, the chairman terminal can initiate registration, voting, quick election (election one in five) , evaluation and etc

**Extended functions with PC/software control**

- ◆ Voting: YES/ABST /NO . Voting result can be shown on the congress terminal by automatic counting
  - Single-choice and multiple-choice voting
  - First key-press effective voting
  - Voting types and modes can be preset
  - Voting result is displayed as pie charts or text
- ◆ Election: elect one or more out of multiple candidates, with 'competitive election', 'single-candidate election' and 'quick election( elect one from five)'
- ◆ Evaluation: Satisfaction, quite satisfaction, dissatisfaction and Abstain. Evaluation mode is set by the software
- ◆ Utilize data encryption and anti-restoration technique to ensure information security
- ◆ Customized voting options and voting methods, support customized language mode or display screen



■ **DCS-1022F-W( Discussion Terminal with Voting and Interpretation)**

**has below function besides functions of DCS-1022-W**

- ◆ Support 6 channels wireless simultaneous interpretation
- ◆ As receiving interpretation signal, terminal supports volume adjustment
- ◆ Congress terminals use 4.3-inch TFT true color LCD touch screen
- ◆ Screen touch for selecting interpretation channels
- ◆ Acoustic frequency response can up to 20Hz 20kHz

**Offline functions without PC/software control**

- ◆ Attendance registration and voting can be run by the chairman terminal, without PC control, the chairman terminal can initiate registration, voting, quick election (election one in five) , evaluation and etc

**Extended functions with PC/software control**

- ◆ Voting: YES/ABST /NO . Voting result can be shown on the congress terminal by automatic counting
  - Single-choice and multiple-choice voting
  - First key-press effective voting
  - Voting types and modes can be preset
  - Voting result is displayed as pie charts or text
- ◆ Election: elect one or more out of multiple candidates, with 'competitive election', 'single-candidate election' and 'quick election( elect one from five)'
- ◆ Evaluation: Satisfaction, quite satisfaction, dissatisfaction and Abstain. Evaluation mode is set by the software
- ◆ Utilize data encryption and anti-restoration technique to ensure information security.
- ◆ Customized voting options and voting methods, support customized language mode or display screen



## ◆ Technical Specifications

Operating Frequency	2.4G/5.2G/5.8G triple-band Communication
Display Parameter	4.3-inch TFT true color touch screen
Acoustic Frequency Response	20Hz~20kHz
Sensitivity	-46 dBV/Pa
Equivalent Noise Level	20dBA (SPL)
Max SPL	125dB (THD<3%)
THD	<0.05%
SNR	≥96dB
MIC Type	Heart pattern directional electre
Directivity	0°/180°: >20 dB (1 kHz)
MIC Length	310mm (standard) 410mm/510mm (optional))
Input Impedance	2KΩ
Headphone Jack	3.5 mm stereo jack
REC Out Port	3.5 mm stereo jack
Headphone Load	>16Ω
Headphone Volume	10mW
Built-in Speaker	2W/8Ω
Channel	6
Dimension (L×W×H)	212mm×139mm×67mm
Weight	0.94kg
Rate voltage	12V
Max Power Consumption	8W
Battery Capacity	3000mAH
Battery Service Life	≥17 hours
Operating Temperature	0~45°C
Storage Temperature	-20~ 50°C

Terminal Model	Terminal Identity	Press-button/ Card-inserting Registration	Speaking	Voting	Simultaneous Interpretation	Screen	Installation	Congress Server
DCS-1022C-W	Chairman	√	√			4.3-inch TFT LCD Touch Screen	Desktop	GONSIN10000N
DCS-1022D-W	Delegate	√	√					
DCS-1022CV-W	Chairman	√	√	√				
DCS-1022DV-W	Delegate	√	√	√				
DCS-1022CI-W	Chairman	√	√		√			
DCS-1022DI-W	Delegate	√	√		√			
DCS-1022CF-W	Chairman	√	√	√	√			
DCS-1022DF-W	Delegate	√	√	√	√			

# Wireless Discussion Terminal with Voting and Interpretation

DCS-1023CF-W/DCS-1023DF-W



Wireless Chairman Terminal with Discussion, Voting and Interpretation  
DCS-1023CF-W



Wireless Delegate Terminal with Discussion, Voting and Interpretation  
DCS-1023DF-W



**Elegant appearance with full metal**  
Exquisite craftsmanship



**4.3-inch touch screen**  
Display microphone status information and can set various functions



**Adjustable microphone angle, intelligent voice control**  
Accurate pickup, adjustable sensitivity, easy to use



**Support 2.4G/5.2G/5.8G communication frequency band**  
Optional wireless communication frequency band to ensure stable system operation



**Rich configuration and complete functions**  
Support voting and simultaneous interpretation function. Built in high fidelity speaker and NFC module



**Support HD automatic camera tracking**  
Support preset panoramic position

## Basic Functions

- ◆ The terminal adopts metal panel and anti fingerprint lens, with high-end texture, which is fashionable and elegant
- ◆ The terminal adopts metal material with fixed rectangular columnar short microphone design, stable connection with the steam and the base; with status indicator, users can easy to see the working status of the terminal
- ◆ 4.3-inch touch screen can display the information of clock, microphone status, battery capacity; Language supports Chinese/ English; it can set the contrast, volume, network setting, language and other functions of the terminal
- ◆ The built-in NFC module supports short-range wireless communication with NFC devices and NFC cards
- ◆ In compliance with IEEE 802.11n network standard, adopt WIFI wireless communication technology.
- ◆ Support 2.4G/5.2G/5.8G triple-band wireless communication, choosing the secure wireless channel to ensure the reliability of wireless connection
- ◆ Adopt all-digital audio technology, use non-compressed, high-fidelity, low-latency transmission technology, support 48KHz audio sampling rate
- ◆ Adopt 128 bit AES encryption technology and support WEP/WPA/WPA2 wireless security technology, ensuring the privacy of meetings and avoiding eavesdrop as well as malicious interference

- ◆ Support SSID WiFi-settings, to ensure non-interference when operating several systems within the same environment
- ◆ The serial-number is one and only, the conference system supports automatically or manually assign ID to the corresponding equipment
- ◆ With Automatic Speech Recognition System, it can realize the function of voice transcription, and realize the meeting recording in multiple ways
- ◆ The audio and sensitivity of each terminal can be adjusted independently or uniformly, and the sound effect can be adjusted according to the on-site speech situation until the perfect effect is achieved
- ◆ Built-in high-speed DSP digital audio processor, it can help remove the useless low-frequency and avoid low-frequency acoustical shock, which better improve the sharpness of sound
- ◆ Intelligent power management mechanism, with power detection, low-voltage warning, energy-saving management, automatic shutdown protection functions
- ◆ Support charging box charging mode, built-in rechargeable lithium battery, terminal battery duration (speaking state)  $\geq 17$  hours
- ◆ Support DC power charging mode, using 12V/2A DC charging
- ◆ Multiplexing switch terminal button, short press for switching on/off terminal; long press for turning on/off terminal
- ◆ The terminal supports call service function( tea, paper, pen, help and etc), requesting service from service background
- ◆ There is a two-color indicator light above the speaking button to indicate the current working status of the terminal
- ◆ With USB interface, support device data communication function
- ◆ Built-in  $8\Omega/2W$  high-fidelity speaker
- ◆ Comes with  $\varnothing 3.5$  mm headphone jack, adjustable volume
- ◆ Attendance registration function: key to register, plug-in card to register(according number),plug-in card to register(non-according number),supplementary register or revocatory register. Attendance is counted automatically and the result can be displayed on the congress terminal
- ◆ Automatic camera tracking function ,support HD automatic camera tracking, and preset overall view
- ◆ Discussion function: support VOX, Auto, FIFO, Operator, Request and PTT
  - ◆ VOX function: in VOX mode, the unit will be activated for user speaks; VOX sensitivity can be adjust by the server; microphone time-out is adjustable
  - ◆ Auto function: Only the number of microphones limited by the system can be activated. When the number of open microphones is greater than the system limit, press the speaking button, the microphone cannot be turned on, you need to turn off the microphones that have been turned on, and then the microphone can be turned on by pressing the button.
  - ◆ FIFO function: When the number of open microphones is greater than the system limit, press the speak button to turn on and automatically turn off the earliest open microphone
  - ◆ Operator function: When the number of open microphones is greater than the limit, press the speak button to enter the application waiting state. After the opened microphones are closed, the applied microphones will be opened automatically
  - ◆ Request function: In Request, press the speak button and the microphone turns on and release the speech button and the microphone will be turned off
  - ◆ PTT function: the delegate send request-to-speak by terminal, and can speak upon chairman approval. The chairman terminal can be activated anytime without approval
- ◆ Voting function:
  - ◆ Offline functions without PC/software control: Attendance registration and voting can be run by the chairman terminal, without PC control, the chairman terminal can initiate registration, voting, quick election (election one in five) , evaluation and etc
  - ◆ Extended functions with PC/software control
    - ◆ Voting: YES/ABST /NO . Voting result can be shown on the congress terminal by automatic counting
      - Single-choice and multiple-choice voting
      - First key-press effective voting



- Voting types and modes can be preset
- Voting result is displayed as pie charts or text
- ◆ Election: elect one or more out of multiple candidates, with 'competitive election', 'single-candidate election' and 'quick election( elect one from five)'
- ◆ Evaluation: Satisfaction, quite satisfaction, dissatisfaction and Abstain. Evaluation mode is set by the software
- ◆ Utilize data encryption and anti-restoration technique to ensure information security
- ◆ Customized voting options and voting methods, support customized language mode or display screen
- ◆ Simultaneous interpretation function:
  - ◆ Simultaneous interpretation of 6 (1+5) channels can be realized, and the simultaneous interpretation list and earphone volume adjustment can be displayed through the touch screen (the earphone must be inserted to select the language channel)
  - ◆ The frequency response of the simultaneous interpreting channel can reach 20Hz~20kHz
- ◆ It can appoint any delegate terminal as the chairman and the vice-chairman terminal. The chairman terminal has below functions besides the all functions of the delegate terminal.
  - ◆ Chairman terminal can be activated at any time without presetting mic limit
  - ◆ Chairman priority button to override all active delegate terminals
  - ◆ Could allow the delegate terminal to speak or not
  - ◆ The number of chairman and vice-chairman terminals in the system is not limited

## ◆ Technical Specifications

Operating Frequency	2.4G/5.2G/5.8G triple-band Communication
Display Parameter	4.3-inch TFT true color touch screen
Acoustic Frequency Response	20Hz~20kHz
Sensitivity	-46 dBV/Pa
Equivalent Noise Level	20dBA (SPL)
Max SPL	125dB THD<3%
THD	<0.05%
SNR	≥96dB
MIC Type	Electre
Directivity Characteristics	Super-cardioid
Directivity	0°/135° > 20 dB (1 kHz) 0°/180° > 15 dB (1 kHz)
Input Impedance	2kΩ
Headphone Output Jack	Ø3.5 mm jack
Built-in Speaker	2W/8Ω
NFC Parameters	Support ISO14443 TYPE A standard, Mifare standard card
Number of simultaneous interpretation channels	6 channels (including the floor channel)
USB Interface	1 for data communication
DC Interface	1 for 12V/2A charging
Battery Capacity	6700mAh
Battery Life	≥17 hours
Microphone size (L×W×H)	220×33×27mm
Base size (L×W×H)	140×120×65mm
Weight	0.87kg
Operating temperature	0-45°C
Storage temperature	-20-50°C

# ◆ Wireless Basic Discussion Terminal

DCS-1023C-W/DCS-1023D-W



Wireless Basic Discussion  
Chairman Terminal  
DCS-1023C-W



Wireless Basic Discussion  
Delegate Terminal  
DCS-1023D-W



**Elegant appearance with full metal**  
Exquisite craftsmanship



**4.3-inch touch screen**  
Display microphone status information  
and can set various functions



**Adjustable microphone angle, intelligent voice control**  
Accurate pickup, adjustable sensitivity, easy to use



**Support 2.4G/5.2G/5.8G communication frequency band**  
Optional wireless communication frequency band to ensure stable system operation



**Support HD automatic camera tracking**  
Support preset panoramic position

## ◆ Basic Functions

- ◆ The terminal adopts metal panel and anti fingerprint lens, with high-end texture, which is fashionable and elegant
- ◆ The terminal adopts metal material with fixed rectangular columnar short microphone design, stable connection with the steam and the base; with status indicator, users can easy to see the working status of the terminal
- ◆ 4.3-inch touch screen can display the information of clock, microphone status, battery capacity; Language supports Chinese/ English; it can set the contrast, volume, network setting, language and other functions of the terminal
- ◆ In compliance with IEEE 802.11n network standard, adopt WIFI wireless communication technology.
- ◆ Support 2.4G/5.2G/5.8G triple-band wireless communication, choosing the secure wireless channel to ensure the reliability of wireless connection
- ◆ Adopt all-digital audio technology, use non-compressed, high-fidelity, low-latency transmission technology, support 48KHz audio sampling rate
- ◆ Adopt 128 bit AES encryption technology and support WEP/WPA/WPA2 wireless security technology, ensuring the privacy of meetings and avoiding eavesdrop as well as malicious interference
- ◆ Support SSID WiFi-settings, to ensure non-interference when operating several systems within the same environment

- ◆ The serial-number is one and only, the conference system supports automatically or manually assign ID to the corresponding equipment
- ◆ With Automatic Speech Recognition System, it can realize the function of voice transcription, and realize the meeting recording in multiple ways
- ◆ The audio and sensitivity of each terminal can be adjusted independently or uniformly, and the sound effect can be adjusted according to the on-site speech situation until the perfect effect is achieved
- ◆ Built-in high-speed DSP digital audio processor, it can help remove the useless low-frequency and avoid low-frequency acoustical shock, which better improve the sharpness of sound
- ◆ Intelligent power management mechanism, with power detection, low-voltage warning, energy-saving management, automatic shutdown protection functions
- ◆ Support charging box charging mode, built-in rechargeable lithium battery, terminal battery duration (speaking state)  $\geq 17$  hours
- ◆ Support DC power charging mode, using 12V/2A DC charging
- ◆ Multiplexing switch terminal button, short press for switching on/off terminal; long press for turning on/off terminal
- ◆ The terminal supports call service function( tea, paper, pen, help and etc), requesting service from service background
- ◆ There is a two-color indicator light above the speaking button to indicate the current working status of the terminal
- ◆ With USB interface, support device data communication function
- ◆ Built-in 8 $\Omega$ /2W high-fidelity speaker
- ◆ Comes with  $\varnothing 3.5$  mm headphone jack, adjustable volume
- ◆ Attendance registration function: key to register, supplementary register or revocatory register. Attendance is counted automatically and the result can be displayed on the congress terminal
- ◆ Automatic camera tracking function ,support HD automatic camera tracking, and preset overall view
- ◆ Discussion function: support VOX, Auto, FIFO, Operator, Request and PTT
  - ◆ VOX function: in VOX mode, the unit will be activated for user speaks; VOX sensitivity can be adjust by the server; microphone time-out is adjustable
  - ◆ Auto function: Only the number of microphones limited by the system can be activated. When the number of open microphones is greater than the system limit, press the speaking button, the microphone cannot be turned on, you need to turn off the microphones that have been turned on, and then the microphone can be turned on by pressing the button.
  - ◆ FIFO function: When the number of open microphones is greater than the system limit, press the speak button to turn on and automatically turn off the earliest open microphone
  - ◆ Operator function: When the number of open microphones is greater than the limit, press the speak button to enter the application waiting state. After the opened microphones are closed, the applied microphones will be opened automatically
  - ◆ Request function: In Request, press the speak button and the microphone turns on and release the speech button and the microphone will be turned off
  - ◆ PTT function: the delegate send request-to-speak by terminal, and can speak upon chairman approval. The chairman terminal can be activated anytime without approval
- ◆ It can appoint any delegate terminal as the chairman and the vice-chairman terminal. The chairman terminal has below functions besides the all functions of the delegate terminal.
  - ◆ Chairman terminal can be activated at any time without presetting mic limit
  - ◆ Chairman priority button to override all active delegate terminals
  - ◆ Could allow the delegate terminal to speak or not
  - ◆ The number of chairman and vice-chairman terminals in the system is not limited

## ◆ Technical Specifications

Operating Frequency	2.4G/5.2G/5.8G triple-band Communication
Display Parameter	4.3-inch TFT true color touch screen
Acoustic Frequency Response	20Hz~20kHz
Sensitivity	-46 dBV/Pa
Equivalent Noise Level	20dBA (SPL)
Max SPL	125dB THD<3%
THD	<0.05%
SNR	≥96dB
MIC Type	Electre
Directivity Characteristics	Super-cardioid
Directivity	0°/135° > 20 dB (1 kHz) 0°/180° > 15 dB (1 kHz)
Input Impedance	2kΩ
Headphone Output Jack	Ø3.5 mm jack
Built-in Speaker	2W/8Ω
USB Interface	1 for data communication
DC Interface	1 for 12V/2A charging
Battery Capacity	6700mAh
Battery Life	≥17 hours
Microphone size (L×W×H)	220×33×27mm
Base size (L×W×H)	140×120×65mm
Weight	0.87kg
Operating temperature	0-45°C
Storage temperature	-20-50°C

## ◆ Congress Terminal Feature Chart

Terminal Model	Terminal Identity	Speaking	Voting	Simultaneous Interpretation	NFC	Built-in Speaker	Screen	Installation	Congress Server
DCS-1023C-W	Chairman	√				√	4.3-inch TFT LCD Touch Screen	Desktop	GONSIN10000N
DCS-1023D-W	Delegate	√				√			
DCS-1022CF-W	Chairman	√	√	√	√	√			
DCS-1022DF-W	Delegate	√	√	√	√	√			

# Dual Chain Backups Conference System

## ◆ Basic Discussion Terminal

DCS-2043C/DCS-2043D



## ◆ Basic Functions

- ◆ In compliance with IEC60914 international standard, utilize digital audio processing and transmission technology
- ◆ Stable and fixed rectangular columnar short microphone stem connected with solid metal base.
- ◆ Conference terminal dual-link backup: With independent microphone digital signal output and analog signal output, when the main link fails, it can be switched to the backup link to ensure the system's normal operation
- ◆ With full digital audio technology, built-in high-speed CPU and high-performance DSP digital audio processor
- ◆ Congress terminal, power HUB and Congress server are all connected by cable. Flexible cabling reduces project workload, makes large-scale construction easier
- ◆ It supports daisy-chain connection, star connection and mixed connection. The system is highly stable and reliable. The break down of one extension won't influence the other extensions, and the malfunction of one attachment among the extensions won't influence the system work
- ◆ The terminal is bottom mounted, which supports hidden or open installation, to make the desktop clearer and tidier
- ◆ Automatic restoration function: supports hot plug
- ◆ Supports 48kHz audio sample freq, acoustic frequency response can be up to 20Hz~20kHz
- ◆ AF sensitivity of each terminal can be adjusted separately or uniformly
- ◆ Built-in high-performance DSP digital audio processor, which helps remove the useless low-frequency and avoids low-frequency acoustical shock, improving the sharpness of sound.
- ◆ Power Status Indicator for terminal
- ◆ The sever comes with built-in OLED panel and navigation button to display speaking mode, system status, terminal setting and management. Language supports Chinese/ English. With rotation knob, the server can manage terminals
- ◆ Physical Mic button utilizes touch design, with concise appearance, convenient operation, accurate response and long service life
- ◆ With headphone jack (Ø 3.5 mm) and adjustable volume(9 levels)
- ◆ Built-in MIC (Ø 3.5 mm) to connect with external MIC, which meets the requirements of different usage scenarios
- ◆ Built-in left and right loudspeakers (2W) and adjustable volume(9 levels). Reasonable tune trope design, output clear and loud sound. Adjusting volume through screen touch is available

- ◆ Speaker mode: VOX, Auto, FIFO, Operator
- ◆ VOX function: in VOX mode, the unit will be activated when user speaks; VOX sensitivity can be adjust by the server ( high, middle, low); microphone time-out is adjustable ( 20-250 seconds).
- ◆ 1-4 delegate unit can be used at the same time
- ◆ Attendance registration function: key to register, plug-in card to register(according number),plug-in card to register(non-according number),supplementary register or revocatory register.
- ◆ Optional HD video camera tracking matrix ,switcher or HD camera, can realize HD automatic camera tracking, supporting preset overall view
- ◆ 8×1+3 video matrix is built in the server, and standard definition video conference camera is selected, which can realize automatic camera tracking function of standard definition and support preset overall view
- ◆ Appoint any terminal as the chairman or delegate terminal

**The chairman terminal has exclusive functions below:**

- ◆ Chairman terminal can be activated at any time
- ◆ Chairman priority button to cut off all active delegate terminals

## ◆ Discussion and Interpretation Terminal

**DCS-2043DI**

### ◆ Basic Functions

Based on functions of DCS-2043D, DCS-2043D unit has functions as below:

- ◆ Language interpretation: 32(1+31) channels
- ◆ Built-in language channel selector (with headphone plugged in)
- ◆ Acoustic frequency response can be up to 20Hz~20kHz



## ◆ Discussion and Voting Terminal

**DCS-2043DV**

### ◆ Basic Functions

Based on functions of DCS-2043D, DCS-2043DV unit has functions as below:

- ◆ Voting: delegate can vote for Yes, No, or Abstain . Vote counting and result display are enabled automatically by PC
  - Single-choice and multiple-choice voting
  - First key-press and final key-press voting
- ◆ Election: elect one or more out of N candidates, with 'competitive election', 'equal number election' and 'quick election'



- ◆ Evaluation: four buttons to evaluate. It comes with four choices "Good", "Fair", "Poor", "Abstain", or the customized evaluation way by software
- ◆ Utilize data encryption and anti-restoration technique to ensure information security
- ◆ Customized voting options and voting methods, support customized language mode or display screen

## ◆ Technical Parameters

Installation	Desktop
Connection Method	Cable
Color	black
Display Parameter	OLED; size: 35mm×18mm
Frequency Range	20Hz~20KHz
Sensitivity	-46 dBV/Pa
VOX Sensitivity	H/M/L(76dB/80dB/82dB)
Equivalent Noise Level	20dBA(SPL)
Max SPL	139dB(THD<3%)
THD	<0.05%
SNR	≥96dB
Headphone/Mic Port	3.5 mm stereo jack×2
Headphone Load	>16Ω
Headphone Volume	10mW
Built-in Loudspeaker	2×2W/8Ω
Channel	32 channels
Dimension (L*W*H)	145mm×170mm×71mm((without Mic stem)
Weight	0.6Kg
Power Supply	24V
Max Power Consumption	7W
Operating Temperature	0~45°C
Storage Temperature	-20~50°C

## ◆ Congress Terminal Feature Chart

Terminal Type	Description	Keypress/Card Registration	Speaking	Voting	Simultaneous Interpretation	Language	OLED screen	Installation
DCS-2043C	Chairman	√	√			Chinese/English	√	Desktop
DCS-2043D	Delegate	√	√			Chinese/English	√	Desktop
DCS-2043DV	Delegate	√	√	√		Chinese/English	√	Desktop
DCS-2043DI	Delegate	√	√		√	Chinese/English	√	Desktop
DCS-2043CF	Chairman	√	√	√	√	Chinese/English	√	Desktop
DCS-2043DF	Delegate	√	√	√	√	Chinese/English	√	Desktop

# ◆ Discussion Terminal with Voting and Interpretation

**DCS-2044CF/DCS-2044DF**



Chairman Terminal with Discussion,  
Voting and Interpretation  
DCS-2044CF



Delegate Terminal with Discussion,  
Voting and Interpretation  
DCS-2044DF



**Elegant appearance with full metal**  
Exquisite craftsmanship



**4.3-inch touch screen**  
Display microphone status information  
and can set various functions



**Adjustable microphone angle, intelligent voice control**  
Accurate pickup, adjustable sensitivity, easy to use



**Rich configuration and complete functions**  
Support voting and simultaneous interpretation function. Built in high fidelity speaker and NFC module



**Support HD automatic camera tracking**  
Support preset panoramic position



**System integration and data interconnection**  
Expand with paperless functions, seamless to connect, flexible to upgrade



**Independent microphone with dual-chain backup**  
Output digital and analog signals, can switch to the backup chain when break down



**Distributed power supply, intelligent partition management**  
Connected by network cable, suitable to large scale scene and other scale scenes

## ◆ Basic Functions

- ◆ The terminal adopts metal panel and anti fingerprint lens, with high-end texture, which is fashionable and elegant
- ◆ The terminal adopts metal material with fixed rectangular columnar short microphone design, stable connection with the steam and the base; with status indicator, users can easy to see the working status of the terminal
- ◆ 4.3-inch touch screen can display the information of clock, microphone status, battery capacity; Language supports Chinese/ English; it can set the contrast, volume, network setting, language and other functions of the terminal



- ◆ The built-in NFC module supports short-range wireless communication with NFC devices and NFC cards
- ◆ With Automatic Speech Recognition System, it can realize the function of voice transcription, and realize the meeting recording in multiple ways
- ◆ The serial-number is one and only, the conference system supports automatically or manually assign ID to the corresponding equipment
- ◆ With full digital audio technology, built-in high-performance CPU core processor, Built-in high-speed DSP digital audio processor, it can help remove the useless low-frequency and avoid low-frequency acoustical shock, which better improve the sharpness of sound
- ◆ Supports 48kHz audio sample freq, acoustic frequency response can be up to 20Hz~20kHz
- ◆ The audio and sensitivity of each terminal can be adjusted independently or uniformly, and the sound effect can be adjusted according to the on-site speech situation until the perfect effect is achieved
- ◆ The main link equipment such as congress terminal, power HUB and congress server are all connected by cable. Flexible cabling reduces project workload, makes large-scale construction easier
- ◆ It supports daisy-chain connection, star connection and mixed connection. The break down of one extension won't influence the other extensions, and the malfunction of one attachment among the extensions won't influence the system work.
- ◆ Rectangular columnar short microphone has dual-chain backups function: with independent microphone digital signal output and analog signal output, when the main link fails, it can be switched to the backup link to ensure the system's normal operation
- ◆ The backup chain of rectangular columnar short microphone connects with XLR male (48V phantom power supply)
- ◆ The type of rectangular columnar short microphone is polyphonic head electre.
- ◆ Physical microphone button utilizes touch design, with concise appearance, convenient operation, accurate response and long service life
- ◆ There is a two-color indicator light above the speaking button to indicate the current working status of the terminal
- ◆ Comes with Ø3.5 mm headphone jack, adjustable volume
- ◆ Built-in 8Ω/2W high-fidelity loudspeaker
- ◆ The terminal connection line has an anti-drop design and the terminal is bottom mounted, which supports hidden or open installation, to make the desktop clearer and tidier
- ◆ Automatic restoration function: supports hot plug
- ◆ Attendance registration function: key to register, plug-in card to register(according number),plug-in card to register(non-according number),supplementary register or revocatory register. Attendance is counted automatically and the result can be displayed on the congress terminal
- ◆ Automatic camera tracking function ,support HD automatic camera tracking, and preset overall view
- ◆ Discussion function: support VOX, Auto, FIFO, Operator, Request and PTT
  - ◆ VOX function: in VOX mode, the unit will be activated for user speaks; VOX sensitivity can be adjust by the server; microphone time-out is adjustable
  - ◆ Auto function: Only the number of microphones limited by the system can be activated. When the number of open microphones is greater than the system limit, press the speaking button, the microphone cannot be turned on, you need to turn off the microphones that have been turned on, and then the microphone can be turned on by pressing the button.
  - ◆ FIFO function: When the number of open microphones is greater than the system limit, press the speak button to turn on and automatically turn off the earliest open microphone
  - ◆ Operator function: When the number of open microphones is greater than the limit, press the speak button to enter the application waiting state. After the opened microphones are closed, the applied microphones will be opened automatically
  - ◆ Request function: In Request, press the speak button and the microphone turns on and release the speech button and the microphone will be turned off
  - ◆ PTT function: the delegate send request -to- speak by terminal, and can speak upon chairman approval. The chairman terminal can be activated anytime without approval
- ◆ Voting function:
  - ◆ Offline functions without PC/software control: Attendance registration and voting can be run by the chairman terminal, without PC control, the chairman terminal can initiate registration, voting, quick election (election one in five) , evaluation and etc

- ◆ Extended functions with PC/software control
  - ◆ Voting: YES/ABST /NO . Voting result can be shown on the congress terminal by automatic counting
    - Single-choice and multiple-choice voting
    - First key-press effective voting
    - Voting types and modes can be preset
    - Voting result is displayed as pie charts or text
  - ◆ Election: elect one or more out of multiple candidates, with 'competitive election', 'single-candidate election' and 'quick election( elect one from five)'
  - ◆ Evaluation: Satisfaction, quite satisfaction, dissatisfaction and Abstain. Evaluation mode is set by the software
  - ◆ Utilize data encryption and anti-restoration technique to ensure information security
  - ◆ Customized voting options and voting methods, support customized language mode or display screen
- ◆ Simultaneous interpretation function:
  - The simultaneous interpretation function of 32 (1+31) channels can be realized. The built-in simultaneous channel selector (the headphone must be inserted before choosing the language channel)
  - ◆ The frequency response of the simultaneous interpreting channel can reach 20Hz~ 20kHz
- ◆ It can appoint any delegate terminal as the chairman and the vice-chairman terminal. The chairman terminal has below functions besides the all functions of the delegate terminal.
  - ◆ Chairman terminal can be activated at any time without presetting mic limit
  - ◆ Chairman priority button to override all active delegate terminals
  - ◆ Could allow the delegate terminal to speak or not
  - ◆ The number of chairman and vice-chairman terminals in the system is not limited

## ◆ Technical Specifications

Installation Way	Desktop
Connection Way	Main chain: network cable Backup chain: XLR male (48V phantom power supply)
Display Specifications	4.3 inch touch screen
Frequency Range	Up to 20Hz 20KHz, support 48KHz audio sampling frequency
Sensitivity	-46 dBV/Pa
Equivalent Noise Level	20dBA(SPL)
Max. SPL	139dB(THD 3%)
THD	0.05%
SNR	≥96dB
Microphone Type	Supercardioid
Directivity	0°/135° > 20 dB (1 kHz) 0°/180° > 15 dB (1 kHz)
Headphone Output Jack	Ø3.5 mm jack
Built-in Speaker	2W/8Ω
NFC Parameters	Support ISO14443 TYPE A standard, Mifare standard card
Number of simultaneous interpretation channels	32 channels (including the floor channel)
Microphone size (L×W×H)	220×33×27mm
Base size (L×W×H)	140×120×65mm
Weight	0.87kg
Operating temperature	0-45°C
Storage temperature	-20-50°C

## ◆ Basic Discussion Terminal

### DCS-2044C/DCS-2044D



Basic Discussion Chairman Terminal  
DCS-2044C



Basic Discussion Delegate Terminal  
DCS-2044D



**Elegant appearance with full metal**  
Exquisite craftsmanship



**Adjustable microphone angle, intelligent voice control**  
Accurate pickup, adjustable sensitivity, easy to use



**Support HD automatic camera tracking**  
Support preset panoramic position



**System integration and data interconnection**  
Expand with paperless functions, seamless to connect, flexible to upgrade



**Independent microphone with dual-chain backup**  
Output digital and analog signals, can switch to the backup chain when break down



**Distributed power supply, intelligent partition management**  
Connected by network cable, suitable to large scale scene and other scale scenes

## ◆ Basic Functions

- ◆ The terminal adopts metal panel and anti fingerprint lens, with high-end texture, which is fashionable and elegant
- ◆ The terminal adopts metal material with fixed rectangular columnar short microphone design, stable connection with the stem and the base; with status indicator, users can easy to see the working status of the terminal
- ◆ With Automatic Speech Recognition System, it can realize the function of voice transcription, and realize the meeting recording in multiple ways
- ◆ The serial-number is one and only, the conference system supports automatically or manually assign ID to the corresponding equipment
- ◆ With full digital audio technology, built-in high-performance CPU core processor, Built-in high-speed DSP digital audio processor, it can help remove the useless low-frequency and avoid low-frequency acoustical shock, which better improve the sharpness of sound
- ◆ Supports 48kHz audio sample freq, acoustic frequency response can be up to 20Hz~20kHz

- ◆ The audio and sensitivity of each terminal can be adjusted independently or uniformly, and the sound effect can be adjusted according to the on-site speech situation until the perfect effect is achieved
- ◆ The main link equipment such as congress terminal, power HUB and congress server are all connected by cable. Flexible cabling reduces project workload, makes large-scale construction easier
- ◆ It supports daisy-chain connection, star connection and mixed connection. The break down of one extension won't influence the other extensions, and the malfunction of one attachment among the extensions won't influence the system work.
- ◆ Rectangular columnar short microphone has dual-chain backups function: with independent microphone digital signal output and analog signal output, when the main link fails, it can be switched to the backup link to ensure the system's normal operation
- ◆ The backup chain of rectangular columnar short microphone connects with XLR male (48V phantom power supply)
- ◆ The type of rectangular columnar short microphone is polyphonic head electre.
- ◆ Physical microphone button utilizes touch design, with concise appearance, convenient operation, accurate response and long service life
- ◆ There is a two-color indicator light above the speaking button to indicate the current working status of the terminal
- ◆ Comes with Ø3.5 mm headphone jack, adjustable volume
- ◆ Built-in 8Ω/2W high-fidelity loudspeaker
- ◆ The terminal connection line has an anti-drop design and the terminal is bottom mounted, which supports hidden or open installation, to make the desktop clearer and tidier
- ◆ Automatic restoration function: supports hot plug
- ◆ Attendance registration function: key to register, supplementary register or revocatory register. Attendance is counted automatically and the result can be displayed
- ◆ Automatic camera tracking function ,support HD automatic camera tracking, and preset overall view
- ◆ Discussion function: support VOX, Auto, FIFO, Operator, Request and PTT
  - ◆ VOX function: in VOX mode, the unit will be activated for user speaks; VOX sensitivity can be adjust by the server; microphone time-out is adjustable
  - ◆ Auto function: Only the number of microphones limited by the system can be activated. When the number of open microphones is greater than the system limit, press the speaking button, the microphone cannot be turned on, you need to turn off the microphones that have been turned on, and then the microphone can be turned on by pressing the button.
  - ◆ FIFO function: When the number of open microphones is greater than the system limit, press the speak button to turn on and automatically turn off the earliest open microphone
  - ◆ Operator function: When the number of open microphones is greater than the limit, press the speak button to enter the application waiting state. After the opened microphones are closed, the applied microphones will be opened automatically
  - ◆ Request function: In Request, press the speak button and the microphone turns on and release the speech button and the microphone will be turned off
  - ◆ PTT function: the delegate send request-to-speak by terminal, and can speak upon chairman approval. The chairman terminal can be activated anytime without approval
- ◆ It can appoint any delegate terminal as the chairman and the vice-chairman terminal. The chairman terminal has below functions besides the all functions of the delegate terminal.
  - ◆ Chairman terminal can be activated at any time without presetting mic limit
  - ◆ Chairman priority button to override all active delegate terminals
  - ◆ The number of chairman and vice-chairman terminals in the system is not limited

## ◆ Technical Specifications

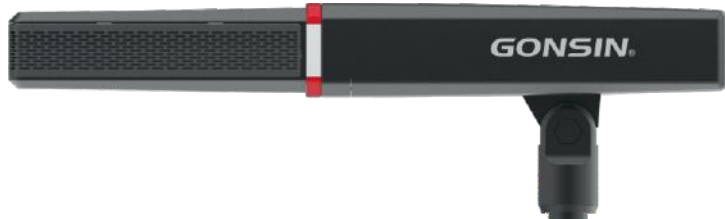
Installation Way	Desktop
Connection Way	Main chain: network cable Backup chain: XLR male (48V phantom power supply)
Frequency Range	Up to 20Hz 20KHz, support 48KHz audio sampling frequency
Sensitivity	-46 dBV/Pa
Equivalent Noise Level	20dBA(SPL)
Max. SPL	139dB(THD 3%)
THD	0.05%
SNR	≥96dB
Microphone Type	Supercardioid
Directivity	0°/135° > 20 dB (1 kHz) 0°/180° > 15 dB (1 kHz)
Headphone Output Jack	Ø3.5 mm jack
Built-in Speaker	2W/8Ω
Microphone size (L×W×H)	220×33×27mm
Base size (L×W×H)	140×120×65mm
Weight	0.87kg
Operating temperature	0-45°C
Storage temperature	-20-50°C

## ◆ Congress Terminal Feature Chart

Terminal Model	Terminal Identity	Speaking	Voting	Simultaneous Interpretation	NFC	Built-in Speaker	Screen	Installation	Congress Server
DCS-2044C	Chairman	✓				✓		Desktop	GONSIN1000N
DCS-2044D	Delegate	✓				✓			
DCS-2044CF	Chairman	✓	✓	✓	✓	✓	4.3-inch TFT LCD Touch Screen		
DCS-2044DF	Delegate	✓	✓	✓	✓	✓			



## ◆ Conference Microphone



### ◆ Basic functions

- ◆ Full metal microphone shell, with drop resistance, durable quality
- ◆ Adjustable pitch angle for best sound receiving effect
- ◆ Hypercardioid microphone with multiple head and three-color status indicators
- ◆ Built-in isolated leading microphone and backup microphone. The leading microphone co-works with digital system audio and the backup one co-works with phantom power audio. The breakdown of leading microphone has no influence on the backup microphone and its output
- ◆ Highly resistant to mobile phone interference

### ◆ Technical Parameters

Radio Head	Multiple
Polar Pattern	Hypercardioid
Acoustic Frequency Response	20Hz~20kHz
Sensitivity	-46 dBV/Pa
Input impedance	2KΩ
Directivity	0°/135°: > 20 dB (1 kHz) 0°/180°: > 15 dB (1 kHz)
Equivalent Noise Level	20dBA (SPL))
Max SPL	139dB (THD<3%)
Output Impedance	200Ω
Power Supply	Leading Microphone: Terminal Backup Microphone:48V DC phantom power
Output Impedance	3 Pin aviation female head and XLR Male
Dimensions (L×W×H)	240mm×35.5mm×31.5mm
Weight	0.4kg

# Flush-Mounting backup conference system



Discussion Terminal + Voting Terminal



Discussion Terminal + Interpretation Terminal



Discussion Terminal +  
Voting and Interpretation Terminal



Discussion Terminal + Voting Terminal +  
Interpretation Terminal

**The part of combinations of the flush-mounting terminals;  
They can be combined freely according to the needs of customers**



## ◆ Basic Discussion Terminal DCS-Q2057



DCS-Q2057C  
Basic Discussion Terminal  
(chairman)



DCS-Q2057D  
Basic Discussion Terminal  
(delegate)

### ◆ Basic Functions

- ◆ In compliance with IEC60914 international standard, utilize digital audio processing and transmission technology
- ◆ The exquisite full-metal panel design is suitable for flush mounting installation
- ◆ Three-color LED to indicate the unit status (on or off)
- ◆ Physical Mic button utilizes touch design, with concise appearance, convenient operation, accurate response and long service life
- ◆ With full digital audio technology, built-in high-speed CPU and high-performance DSP digital audio processor
- ◆ Congress terminal, power HUB and congress server are all connected by cable. Flexible cabling reduces project workload, makes large-scale construction easier
- ◆ It supports daisy-chain connection, star connection and mixed connection. The system is highly stable and reliable. The break down of one extension won't influence the other extensions, and the malfunction of one attachment among the extensions won't influence the system work
- ◆ Automatic restoration function: supports hot plug
- ◆ Supports 48kHz audio sample freq, acoustic frequency response can up to 20Hz~20kHz
- ◆ AF sensitivity of each terminal can be adjusted separately or uniformly
- ◆ Built-in high-performance DSP digital audio processor, helps remove the useless low-frequency and avoid low-frequency acoustical shock, which better improve the sharpness of sound
- ◆ Standard electret cardioid pickup pattern microphone with lamp bezel (On or Off), rich timbre. Several kinds of soft gooseneck microphone stems for various conferences (standard: 410mm, optional: 310mm/510mm)
- ◆ Pluggable gooseneck microphone stem, convenient for equipment maintenance.
- ◆ Highly resistant to mobile phone interference
- ◆ Loud speaker: VOX, Auto, FIFO, Operator
- ◆ VOX function: in VOX mode, the unit will be activated for user speaks; VOX sensitivity can be adjust by the server ( high, middle, low); microphone time-out is adjustable ( 20-250 seconds)
- ◆ 1-4 delegate unit can be used except the chairman unit
- ◆ Optional HD video camera tracking matrix ,switcher or HD camera, can realize HD automatic camera tracking, supporting preset overall view
- ◆ 8×1+3 video matrix is built in the server, and standard definition video conference camera is selected, which can realize automatic camera tracking function of standard definition and support preset overall view
- ◆ The serial-number is one and only, the congress system supports automatically or manually assign ID to the corresponding equipment
- ◆ Attendance registration function: key to register, supplementary register or revocatory register



- ◆ Be able to connect with simultaneous interpretation terminal/voting terminal/voting and interpretation terminal, to extend the conference function
- ◆ Appoint any terminal as the chairman or delegate terminal

**The chairman terminal has functions below, besides all functions of delegate terminal:**

- ◆ Chairman terminal can be activated at any time without presetting mic limit
- ◆ Chairman priority button to override all active delegate terminals

## ◆ Basic Discussion Delegate Terminal(Hand-held) DCS-2057D

### ◆ Basic Functions

- ◆ In compliance with IEC 60914 international standard
- ◆ Support to connect to other 20000S products, together composing multiple big systems with different terminals
- ◆ Hand-held design with full-metal microphone suits for flush mounting installation
- ◆ With spring line, convenient for extension and storage
- ◆ Transparent silicone button with status indicator, responds accurately and has long service life
- ◆ Full digital audio technology provides CD-level sound track quality
- ◆ Equipment like congress terminal, power HUB and conference server is connected by cable, convenient for construction
- ◆ Support daisy-chain connection, star connection and mixed connection; break down of one extension won't influence other extensions, and the mal-function of one attachment among the extensions won't influence the system work, securing stable work of the system
- ◆ Auto restoration function: support hot plug
- ◆ Support 48kHz audio sampling frequency; acoustic frequency response up to 20Hz~20kHz
- ◆ Support separated adjustment of audio and sensitivity of the terminal; adjust the sound effect based on the on-site speaking situation
- ◆ Build-in high performance DSP digital audio processor can eliminate invalid low-frequency components, improving the sound quality
- ◆ Highly resistant to mobile phone interference
- ◆ With one and only serial-number, the congress system supports to automatically or manually assign ID to the corresponding equipment
- ◆ Speaking mode: VOX, Auto, FIFO, Operator
- ◆ In VOX mode, the microphone will be activated as users speak. VOX sensitivity (high/middle/low) and mic time-out(20-250 seconds)is adjustable
- ◆ 5 delegate units can be activated at the same time(one chairman unit and 4 delegate units)
- ◆ Attendance registration: key to register, supplementary register or revocatory register
- ◆ Optional HD video camera tracking matrix ,switcher or HD camera, can realize HD automatic camera tracking, supporting preset overall view
- ◆ 8×1+3 video matrix is built in the server, and standard definition video conference camera is selected, which can realize automatic camera tracking function of standard definition and support preset overall view



- ◆ Be able to connect with interpretation/voting/interpretation & voting terminal, carrying out extended conference function
- ◆ Random delegate unit can be set as vice-chairman terminal; no limit on the number of vice-chairman terminal

**Besides functions of delegate unit, the vice-chairman unit has functions as follows:**

- ◆ Vice-chairman unit can be activated at any time without presetting MIC limit

## ◆ **32-Channel Terminal** DCS-Q2057SI



### ◆ **Basic functions**

- ◆ In compliance with IEC60914 international standard, utilize digital audio processing and transmission technology
- ◆ The exquisite full-metal panel design is suitable for flush mounting installation
- ◆ Two digit LED display Channel number and volume
- ◆ Physical Mic button utilizes touch design, with concise appearance, convenient operation, accurate response and long service life
- ◆ With full digital audio technology, built-in high-speed CPU and high-performance DSP digital audio processor
- ◆ Congress terminal, power HUB and congress server are all connected by cable. Flexible cabling reduces project workload, makes large-scale construction easier
- ◆ It supports daisy-chain connection, star connection and mixed connection. The system is highly stable and reliable. The break down of one extension won't influence the other extensions, and the malfunction of one attachment among the extensions won't influence the system work
- ◆ Automatic restoration function: supports hot plug
- ◆ Highly resistant to mobile phone interference
- ◆ The serial-number is one and only, the congress system supports automatically or manually assign ID to the corresponding equipment
- ◆ Be able to connect with basic discussion terminal/voting terminal, to extend the conference function
- ◆ Support 32 (1+31) channels simultaneous interpretation
- ◆ Built-in language channel selector and adjustable volume(9 levels), press button to change channel and adjust volume
- ◆ Acoustic frequency response can up to 20Hz~20kHz

## ◆ Dual 32-Channel Terminal

DCS-Q2057DI



### ◆ Basic functions

- ◆ In compliance with IEC60914 international standard, utilize digital audio processing and transmission technology
- ◆ The exquisite full-metal panel design is suitable for flush mounting installation
- ◆ Two digit LED display Channel number and volume
- ◆ Two independent LED to indicate the unit status (on or off)
- ◆ Support two delegates use interpretation functions independently, volume and interpretation channel could be adjusted respectively
- ◆ Three-color LED to indicate the unit status (on or off)
- ◆ Physical Mic button utilizes touch design, with concise appearance, convenient operation, accurate response and long service life
- ◆ With full digital audio technology, built-in high-speed CPU and high-performance DSP digital audio processor
- ◆ Congress terminal, power HUB and congress server are all connected by cable. Flexible cabling reduces project workload, makes large-scale construction easier.
- ◆ It supports daisy-chain connection, star connection and mixed connection. The system is highly stable and reliable. The break down of one extension won't influence the other extensions, and the malfunction of one attachment among the extensions won't influence the system work.
- ◆ Automatic restoration function: supports hot plug
- ◆ Highly resistant to mobile phone interference
- ◆ The serial-number is one and only, the congress system supports automatically or manually assign ID to the corresponding equipment
- ◆ Be able to connect with basic discussion terminal/voting terminal, to extend the conference function
- ◆ Support 32 (1+31) channels simultaneous interpretation
- ◆ Built-in language channel selector and adjustable volume(9 levels), press button to change channel and adjust volume
- ◆ Acoustic frequency response can up to 20Hz~20kHz

## ◆ Voting Terminal

DCS-Q2057V



### ◆ Basic functions

- ◆ In compliance with IEC60914 international standard, utilize digital audio processing and transmission technology
- ◆ The exquisite full-metal panel design is suitable for flush mounting installation
- ◆ Three-color LED to indicate the unit status (on or off)
- ◆ Physical Mic button utilizes touch design, with concise appearance, convenient operation, accurate response and long service life
- ◆ Congress terminal, power HUB and congress server are all connected by cable. Flexible cabling reduces project workload, makes large-scale construction easier
- ◆ It supports daisy-chain connection, star connection and mixed connection. The system is highly stable and reliable. The break down of one extension won't influence the other extensions, and the malfunction of one attachment among the extensions won't influence the system work
- ◆ Automatic restoration function: supports hot plug
- ◆ The serial-number is one and only, the congress system supports automatically or manually assign ID to the corresponding equipment
- ◆ Attendance registration function: key to register, supplementary register or revocatory register.
- ◆ Voting: delegate can vote for Yes, No, Abstain. Vote counting and result display are enabled automatically by PC
  - Single-choice and multiple-choice voting
  - First key-press and final key-press voting
- ◆ Election: elect one or more out of N candidates, with 'competitive election', 'equal number election' and 'quick election'
- ◆ Evaluation: four buttons to evaluate. It comes with four choices "Good", "Fair", "Poor", "Abstain", or the customized evaluation way by software
- ◆ Utilize data encryption and anti-restoration technique to ensure information security
- ◆ Customized voting options and voting methods, support customized language mode or display screen
- ◆ Be able to connect with basic discussion terminal/interpretation terminal, to extend the conference function

# ◆ Voting and Interpretation Terminal

## DCS-Q2057VI



### ◆ Basic functions

- ◆ In compliance with IEC60914 international standard, utilize digital audio processing and transmission technology
- ◆ The exquisite full-metal panel design is suitable for flush mounting installation
- ◆ Two digit LED display Channel number and volume
- ◆ Two independent LED to indicate the unit status (on or off)
- ◆ Physical Mic button utilizes touch design, with concise appearance, convenient operation, accurate response and long service life
- ◆ With full digital audio technology, built-in high-speed CPU and high-performance DSP digital audio processor
- ◆ Congress terminal, power HUB and congress server are all connected by cable. Flexible cabling reduces project workload, makes large-scale construction easier
- ◆ It supports daisy-chain connection, star connection and mixed connection. The system is highly stable and reliable. The break down of one extension won't influence the other extensions, and the malfunction of one attachment among the extensions won't influence the system work.
- ◆ Automatic restoration function: supports hot plug
- ◆ Highly resistant to mobile phone interference
- ◆ The serial-number is one and only, the congress system supports automatically or manually assign ID to the corresponding equipment
- ◆ Attendance registration function: key to register, supplementary register or revocatory register.
- ◆ Voting: delegate can vote for Yes, No, Abstain. Vote counting and result display are enabled automatically by PC
  - Single-choice and multiple-choice voting
  - First key-press and final key-press voting
- ◆ Election: elect one or more out of N candidates, with 'competitive election', 'equal number election' and 'quick election'
- ◆ Evaluation: four buttons to evaluate. It comes with four choices "Good", "Fair", "Poor", "Abstain", or the customized evaluation way by software
- ◆ Utilize data encryption and anti-restoration technique to ensure information security.
- ◆ Customized voting options and voting methods, support customized language mode or display screen
- ◆ Support 32 (1+31) channels simultaneous interpretation
- ◆ Built-in language channel selector and adjustable volume (9 levels) , press button to change channel and adjust volume
- ◆ Acoustic frequency response can up to 20Hz~20kHz
- ◆ Be able to connect with basic discussion terminal, to extend the conference function

**Connector DCS-CON2057**



**Basic functions**

- ◆ In compliance with IEC60914 international standard, utilize digital audio processing and transmission technology
- ◆ Cooperate with basic discussion terminal, one connector could connect one discussion terminal, supply power for the discussion terminal
- ◆ Realize the communication between basic discussion terminal and the server
- ◆ Connector, basic discussion terminal, power HUB and congress server are all connected by cable. Flexible cabling reduces project workload, makes large-scale construction easier
- ◆ It supports daisy-chain connection, star connection and mixed connection. The system is highly stable and reliable. The break down of one extension won't influence the other extensions, and the malfunction of one attachment among the extensions won't influence the system work
- ◆ Automatic restoration function: supports hot plug
- ◆ When there is only basic discussion terminal, it requires the connectors; when the basic discussion, terminal is extended to other terminal, it do not require the connector

**Congress Terminal Feature Chart**

Terminal Type	Description	Button for register	Discussion	Voting	Interpretation	Automatic video tracking	Connection	Installation
DCS-Q2057C	Chairman		✓			✓	RJ 45 Connector	Desktop/seat armrest flush-mounting installation (DCS-2057D is seat armrest installation)
DCS-Q2057D	Delegate		✓			✓		
DCS-Q2057SI					single			
DCS-Q2057DI					dual			
DCS-Q2057V		✓		✓				
DCS-Q2057VI		✓		✓	single			
DCS-CON2057							Concealed	
DCS-2057D	Delegate		✓			✓	RJ-45 Plugs	Seat armrest flush mounting installation

## Technical Parameters

Product	Basic Discussion Terminal	Basic Discussion Delegate Terminal (Hand-held)	32-channel terminal	Voting and Interpretation Terminal	Dual 32-channel terminal	Voting Terminal
Mounting	Desktop/seat armrest flush-mounting installation	Seat armrest flush-mounting installation	Desktop/seat armrest flush-mounting installation			
Panel Dimension (L×W×H)	83×40×3.5mm		158×40×3.5mm			
Product Dimension (L×W×H)	83×40×44mm	191×27.8×27.8mm	158×40×111.5mm			
Color	Black	metal gray	Black			
Display Parameter	/		Two digit LED			/
Status Indicator	LED Indicator		/	LED Indicator		
MIC	Acoustic Frequency Response	20Hz~20kHz		/	/	/
	MIC Type	Heart pattern directional electret		/	/	/
	MIC Stem Length	410mm (standard), 310mm/510mm (optional)	191×27.8×27.8mm	/	/	/
	Sensitivity	-46 dBV/Pa		/	/	/
	VOX Sensitivity	H/M/L(76dB/80dB/82dB)		/	/	/
	Input Impedance	2KΩ		/	/	/
	Directivity	0°/180°: >20 dB (1 kHz)		/	/	/
	Equivalent Noise Level	20dBA(SPL)		/	/	/
	Max SPL	125dB (THD<3%)		/	/	/
	Frequency Response	/		20Hz~20kHz		
THD	/		THD(<0.3%)			/
SNR	/		≥95dB			/
Headphone Port	/		Ø3.5 mm stereo jack	Ø3.5 mm stereo jack×2	/	
Headphone Load	/		> 16Ω			/
Headphone Volume	/		10mW			/
Channel	/		32			/
Interface	1× RJ45 Connector	1×RJ-45 Plugs	3× RJ45 Connector			
Power Supply	Sever/Interpretation Terminal/ Voting Terminal/ Voting and Interpretation Terminal		Sever/ HUB			
Power	24V					
Max Power Consumption	6.4W					
Weight	0.16kg	0.22kg	0.6kg			
Operating Temperature	0~45°C					
Storage Temperature	-20~50°C					

## **Congress Server** GONSIN1000N



### **Basic Functions**

- ◆ Black tempered glass panel design, with navigation knob, OLED screen to display system status information, and provide Chinese/English and other language menus
- ◆ With wired and wireless seamless compatible technology, wired conference terminals and wireless conference terminals can be mixed into the same conference server for unified management, data intercommunication, and realizing large system platform for sharing multi-mode conference terminals
- ◆ Maximally support 128 wireless APs to achieve greater wireless coverage area and terminal seamless roaming
- ◆ Developed based on LINUX operating system platform, adopt full digital audio technology, support 48kHz audio sampling frequency, built-in DSP digital audio processor, support treble and bass adjustment
- ◆ Adopt WiFi wireless communication technology, in compliance with IEEE 802.11n network standard, adopt 128-bit AES encryption technology, support WEP/WPA/WPA2 wireless security technology, avoid eavesdropping and malicious interference
- ◆ Support SSID wireless network settings, which ensures multiple systems can be used in the same environment at the same time, and do not interfere with each other
- ◆ Each terminal has unique unit ID; the congress system can assign unit ID to congress terminal automatically or manually
- ◆ It provides 4-channel wired conference terminal interface and supports hand-in-hand connection, star connection and mixed connection. The breakdown of one terminal won't influence the other terminals, and the malfunction of one terminal cabling will not affect the whole system, ensuring the system stability
- ◆ Support dual-server hot stand-by function. When the current server doesn't work, it will automatically switch to the stand-by server
- ◆ Support the application of splitting and merging of the conference room, with 4 channels of audio grouping output, can be split into an independent system using in multiple meeting rooms, or can be used at the same time as the whole system, which is convenient and flexible
- ◆ Support separated adjustment of audio and sensitivity of the terminal; adjust the sound effect based on the on-site speaking situation
- ◆ A single server supports the maximum number of active terminals: 4 terminals for a single wireless system, 5 terminals for a single wired system, and 5 terminals for mixed use of wireless and wired systems



- ◆ Discussion function: support VOX, Auto, FIFO, Operator, Request and PTT
  - ◆ VOX function: in VOX mode, the unit will be activated for user speaks; VOX sensitivity can be adjust by the server; microphone time-out is adjustable
  - ◆ Auto function: Only the number of microphones limited by the system can be activated. When the number of open microphones is greater than the system limit, press the speaking button, the microphone cannot be turned on, you need to turn off the microphones that have been turned on, and then the microphone can be turned on by pressing the button.
  - ◆ FIFO function: When the number of open microphones is greater than the system limit, press the speak button to turn on and automatically turn off the earliest open microphone
  - ◆ Operator function: When the number of open microphones is greater than the limit, press the speak button to enter the application waiting state. After the opened microphones are closed, the applied microphones will be opened automatically
  - ◆ Request function: In Request, press the speak button and the microphone turns on and release the speech button and the microphone will be turned off
  - ◆ PTT function: the delegate send request-to-speak by terminal, and can speak upon chairman approval. The chairman terminal can be activated anytime without approval
- ◆ With Automatic Speech Recognition System, it can realize the transcription of speech into text
- ◆ Support USB automatic recording function, after inserting the U disk in the front panel, the system audio can be recorded automatically/manually, and the current recording status can be displayed in real time
- ◆ Built-in real-time clock and perpetual calendar, which can display the current time on the congress server and congress terminal
- ◆ Support one-key shutdown by server, and all wireless congress terminals are off, which reduces workload greatly
- ◆ With full digital interpreter console, it can achieve 6-channel (wireless terminal) or 32-channel (wired terminal) simultaneous interpretation function (including the floor channel), and the audio frequency response of the simultaneous interpretation channel can reach 20Hz~20kHz
- ◆ Optional HD video camera tracking matrix, switcher or HD camera, HD automatic camera tracking with preset panoramic view can be realized. It supports up to 8 HD cameras and multi system cascading to meet the camera tracking requirements of large systems and conference venues
- ◆ The server supports the infrared mobile camera tracking function. It needs to be equipped with an infrared automatic tracking camera and a conference terminal (specified model) to realize the intelligent tracking and positioning of the wireless conference terminal. The wireless microphone terminal can be moved freely within the infrared detection range, and can be tracked in real time without resetting the preset position
- ◆ The advanced TCP / IP connection control mode is adopted between the congress server and the control computer, which can realize the control management, remote diagnosis and remote upgrade of the congress system

#### Extended functions with PC/software control:

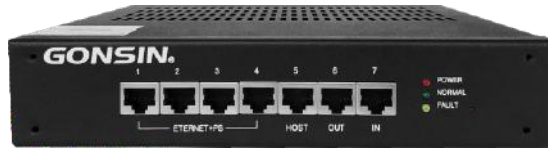
- ◆ Can realize conference registration, voting, different voting agenda , and compatible use with GONSIN paperless conference system
- ◆ Operator can click terminal icons for terminal management such as approve or reject the delegate to speak
- ◆ Speaking time limit can be set, the active terminal will be turned off when the speaking time limit reaches
- ◆ It can monitor the system running status in real time, failure alerts will be prompted out immediately, so to ensure important meeting for smooth running
- ◆ It can realize dual software hot stand-by function. One control computer can be set to the backup mode and connected to the system. In case of the malfunction of the current control computer, the backup computer can be hosted automatically, so to ensure the smooth progress of the conference without interruption

## ◆ Technical Specifications

System capacity	65025
Audio frequency response	20Hz ~ 20kHz
Signal-to-noise ratio	>96dBA
Channel isolation	>85dB
Dynamic Range	>94dB
Total harmonic distortion	<0.05%
Audio interface	1 balanced audio input (XLR), 1 balanced audio output (XLR), 2 unbalanced audio output (RCA), 4-channel grouped audio output (Phoenix)
Maximum audio output	LINE OUT: +20 dBu unbalanced, BLANCE OUT: +20 dBu balanced MIXER OUT: +20 dBu balanced, AUDIO OUT 1 ~ 4: +20 dBu balanced
Output impedance	>1kΩ
Central control method	RS-232
PC communication method	TCP/IP
Camera control method	RS-485
Wired congress terminal interface	RJ45×4, adopt own power supply protocol
Network Interface	RJ45×2, support standard POE power supply
Recording interface	USB (U disk format: FAT32)
Recording file size	0.8M/min
Supported cameras	8 (SD)
Video input interface	RCA×8(1Vp-p 75Ω) or SDI×4 (SD/HD/3G)
Video output interface	RCA×4(1Vp-p 75Ω) or SDI×1 (SD/HD/3G)
Camera Tracking Protocol	PELCO-P/PELCO-D/VISCA
Display	OLED (61mm×37mm)
Installation	Desktop or 19' cabinet installation
Power Supply	AC100 ~ 240V, 50/60Hz
Maximum power consumption	300W
Dimensions (L×W×H)	483×437×90mm
Weight	8.9kg
Operating temperature	-0~45°C
Storage temperature	-20~50°C



# Power Hub HUB-P150S



## Basic functions

- ◆ In compliance with IEC60914 international standard, utilize digital audio processing and transmission technology
- ◆ Based on digital control framework and high-speed CPU, the system has more stable performance and higher processing speed
- ◆ Developed on Linux-based OS platform, the server has robust stability and thus applies to large-sized convention centers with strict running conditions
- ◆ Power Status Indicator, support detection for voltage, current, temperature, overload, overheat
- ◆ Distributed management function, controlled by the server automatically, the operation data is uploaded by network
- ◆ Adopt distributed power supply management, single power HUB can connect to up to 65 terminals (turn off built-in speaker) or 5 desktop paperless all-in-one terminals (according to terminal model and the length of cable); it can form a super-large system with 65,025 terminals, by adding power hubs and servers. Power HUB are controlled and managed by the server
- ◆ All the equipment are connected by cable. Flexible cabling reduces project workload, makes large-scale construction easier.
- ◆ It supports daisy-chain connection, star connection and mixed connection. The system is highly stable and reliable. The break down of one extension won't influence the other extensions, and the malfunction of one attachment among the extensions won't influence the system work.
- ◆ Automatic restoration function: supports hot plug.
- ◆ The serial-number is one and only, the congress system supports automatically or manually assign ID to the corresponding equipment.
- ◆ Built-in congress terminal auto-detect mechanism
- ◆ Real-time monitor for system operation, to find out system error in time
- ◆ Co-work with congress server to expand congress terminal connection and designed to meet the power requirement for larger congress system.
- ◆ 5 terminal connection ports and 2 extended connection ports for HUB
- ◆ Synchronously start up and shut down with server
- ◆ More functions when cooperates with system control software

## Technical Parameters

System Capacity	65,025
Standard Capacity	65 Terminals(turn off built-in speaker)/25 Terminals(turn on built-in speaker)/5 Desktop Paperless All-in-one Terminals
Status Indication	LED
Power	AC 100~240V,50/60Hz
Max Power Consumption	150W
Terminal Connection Port	RJ45×7
Operating Temperature	0~45°C
Storage Temperature	-20~50°C
Dimensions(L×W×H)	238mm×165mm×45mm
Installation	Hidden installation or cabinet installation, support 2 HUB side by side cabinet installation
Weight	2kg

## ◆ Power Hub cabinet installation accessories

### GX-HUB02



### ◆ Technical Specifications

Dimensions (L×W×H)

483×40×4mm

## ◆ Wireless AP WAP-10D

### ◆ Basic Functions



- ◆ Adopt WiFi wireless communication technology, in compliance with IEEE 802.11b/g/n and IEEE 802.11ac/a/n network standards, the wireless transmission rate can reach 1167Mbps
- ◆ Support MU-MIMO technology based on 802.11ac WAVE2 specification to solve the network transmission pressure in crowded places
- ◆ It adopts 128 bit AES encryption technology and supports WEP / WPA / WPA2 wireless security technology to ensure the privacy of the conference and avoid eavesdropping and malicious interference
- ◆ Support 2.4G/5.2G/5.8G three communication frequency bands optional, by choosing a clean wireless channel, to ensure the stability and reliability of wireless communication
- ◆ The wireless signal coverage of single AP is stable, and the communication distance is 30 meters
- ◆ Support up to 128 wireless AP connection management to achieve greater wireless coverage, and conference terminals can roam seamlessly
- ◆ Support SSID wireless network settings to ensure that multiple systems in the same environment are used at the same time without interference
- ◆ The built-in matrix smart antenna can automatically adjust the working channel and transmit power of the wireless access point, and detect the interference of the surrounding environment in real time, so as to effectively reduce the wireless interference and improve the communication quality of the wireless network
- ◆ Support POE power supply, easy to install
- ◆ Support wall-mounted / bracket / ceiling / desktop placement of a variety of installation methods, can adapt to the installation environment of various types of venues

## Technical Specifications

Working frequency	802.11ac/n/a: 5.725GHz-5.850GHz; 5.15~5.35GHz (China) 802.11b/g/n: 2.4GHz-2.483GHz (China)
Maximum transmission rate	1167Mbps
Ethernet interface	1×10/100/1000Mbps
Console interface	1 RJ45 interface
Single AP capacity	60 units
Wireless signal coverage	30 meters (stable communication distance)
Transmit power	≤20 dBm
Adjustable power granularity	1 dBm
Adjustable power range	1 dBm~corresponding national regulations
Power supply	PoE power supply (support 802.3af/802.3at), power adapter (12V/2A)
Power consumption	< 13W
Dimensions (L×W×H)	196 mm×196 mm×45 mm
Weight	0.5kg
Operating temperature	-10°C~55°C
Storage temperature	-40°C~70°C
Working humidity/Storage humidity	5%~95% (non-condensing)
Protection level	IP 41

## Charging Cabinet

### CHG-08



### Basic Functions

- ◆ Equip with wireless conference terminal DCS-1023-W series, the terminal is directly placed on the charging case for charging
- ◆ Indicator light shows working status
- ◆ Intelligent charging management to ensure safer and more reliable charging process. At the same time, it can manage battery power and charging current in real time to extend battery life
- ◆ The charging circuit adopts an independent modular design. The terminal is automatically detected, and the charging module does not work when the terminal is inserted or not inserted by mistake
- ◆ Up to 8 wireless terminals can be charged at the same time

### Technical Specifications

Operating voltage	12V
Working current	15A
Charging time	4hours
Size (L×W×H)	415×344×87mm
Weight	4.78kg
Operating temperature	0~45°C
Storage temperature	-20~50°C

# Charging Cabinet

## CHG-10A



### Basic Functions

- ◆ Equip with wireless conference terminal DCS-1022-W series terminal, the terminal battery can be detached and placed on the charging case for charging
- ◆ Intelligent charging management to ensure safer and more reliable charging process. At the same time, it can manage battery power and charging current in real time to extend battery life
- ◆ The charging circuit adopts independent modular design
- ◆ The battery adopts anti-reverse insertion design, and the battery is automatically detected. When the battery is reversed or not inserted, the charging module does not work
- ◆ Up to 10 batteries can be charged at the same time, and the charging time is 5 hours
- ◆ Red/green LED lights indicate charging status
- ◆ Adopt the switching power supply of universal voltage, the use range is wider, and the power supply is sufficient

### Technical Specifications

Power supply	AC100~240V, 50/60Hz
Power	150W
Charging time	5 hours
Size (L×W×H)	415×344×87mm
Weight	6.7kg (net weight)/8.7kg (full load)
Operating temperature	0~45°C
Storage temperature	-20~50°C

# Battery

## BAT3300

### Technical Specifications

Co-work with DCS-1022 Terminal	
Capacity	3000mAh
Nominal Voltage	11.1V
Charging Voltage	12.6V±0.03V
Standard	GB/T 18287-2000



## ◆ HD Dome Camera

### GX-HD3330



### ◆ Basic Functions

- ◆ With infrared mobile camera tracking function (need to match the conference terminal of the specified model), it can realize the intelligent tracking and positioning of the terminal. The terminal can move freely within the infrared detection range, and it can track in real time without resetting the preset position
- ◆ Support automatic tracking switching of multiple camera domes, support up to 8 camera domes, and support multi-camera cascade control
- ◆ Adopt infrared anti-jamming algorithm, stable and reliable. Be fearless of visible light and infrared light (sunshine, light, whiteboard and etc.)
- ◆ Accurate positioning and stable tracking. The tracking picture can be automatically zoomed according to the distance of the target, always keeping the best size
- ◆ The tracking effect is not affected by the size and shape of the meeting room
- ◆ Switching codes such as target occurrence and loss can be arbitrarily customized through the parameter setting interface, and can be flexibly compatible with other conference equipment
- ◆ Support high-definition video H.264 encoding output, output full HD video up to 1080P60, support main and auxiliary dual stream
- ◆ Multi-Format Video Outputs: support SDI, DVI-D, NETWORK, and USD 3.0 video output interface.
- ◆ Maximum tracking distance can reach 18 meters

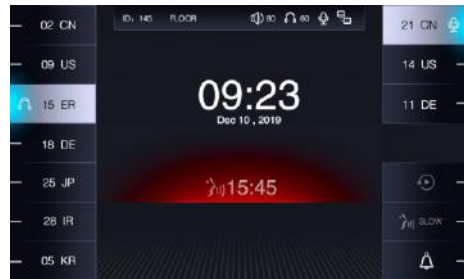


## ◆ Technical Specifications

Sensor	1/2.8 inches CMOS, 2.14 million sensor
focal distance	3.9mm~46.8mm
AV	F1.~F2.8
optical zoom	12 times
digital zoom	12 times
View Angle	72.5°~6.3°
Focus System	Auto / Manual/ PTZ/ One Push
Minimum Illumination	0.5 Lux (colors), 0.1Lux (black and white)
Shutter Speed	1/1 - 1/10,000 second
Tune-up	Auto/Manual
White Balance	Auto / Indoor / Outdoor/ One Push Auto / Manual tracking
Exposure Control	Auto / Manual/Shutter Priority/Aperture Priority
SNR	≥50dB
Language	ENGLISH
Pan Rotation	-170°~+170°
Tilt Rotation	-30°~+90°
Pan Control Speed	0.1°~120°/s
Tilt Control Speed	0.1°~90°/s
Preset Number	256
Pan-tilt control interfaces	RS-232/RS-485/USB3.0
Network interface	100M self-adapted to Ethernet interface(RJ45)
Network protocol	PELCO-D, VISCA, UVC1.1
Video interface	3G-SDI, DVI-D, USB3.0
Video format	1080P60/1080P50/1080P30 1080P25/1080I60/1080I50 720P60/720P50
Resolution ratio	MAX 1920×1080@60fps
Video compression	H.264
Audio compression	AAC
Network protocol	ONVIF/RTSP/HTTP/TCP UDP/RTMP
Video Preview Number	MAX 10, at the same time
Dual-stream	YES
Power	DC12V
Consumption	<30W
Operating Temperature	0~40°C
Storage Consumption	-20~60°C
Dimensions (L×W×H)	243mm×145mm×163mm
Color	Grey



## ◆ Interpreter Console IC-2032N



### ◆ Basic Functions

- ◆ In compliance with IEC60914 international standard
- ◆ The design of physical buttons / knobs is reasonable , which is easy to operate; The buttons / knobs are sensitive with good touch, accurate operation response, long service life and without mechanical button sound
- ◆ With fully digital audio technology, built-in high-speed CPU
- ◆ Interpreter console, conference terminal, power HUB and conference server are all connected by network cables. Flexible cabling reduces project workload and makes large-scale construction projects easier
- ◆ It supports hand-in-hand connection, star connection and mixed connection. The system is highly stable and reliable. The breakdown of one terminal won't influence the other terminals , and the malfunction of one terminal cabling will not affect the whole system, ensuring the system stability
- ◆ Automatic restoration function: supports hot plug
- ◆ Supports 48kHz audio sampling freq, acoustic frequency response can be up to 20Hz to 20kHz
- ◆ Built-in high-performance digital audio processor(DSP), helpful to remove the useless low frequency and avoid low-frequency acoustical shock, which is better to improve the clarity of sound
- ◆ Support 32 channels simultaneous interpretation(including the floor channel)
- ◆ Support direct interpretation and relay interpretation
- ◆ 7-inch TFT LCD screen to display setting information ,input and output channel information
- ◆ With channel selection button, long press to quickly increase / decrease the channel, short press to increase / decrease the channel, convenient to select channels
- ◆ 7 input channels can be preset, with corresponding shortcut keys and input channel occupation indicator
- ◆ 3 output channels can be preset , with corresponding shortcut keys. When all interpreter consoles are closed, the output channel can be automatically switched to the floor channel
- ◆ Standard cardioid directional electret microphone with indicator ring (On or Off) . Multiple soft gooseneck microphone stems can be selected (standard: 410mm, optional:310mm/510mm)
- ◆ Pluggable microphone stem; During the meeting recess, it can be disassembled for equipment maintenance
- ◆ Built-in 2W loudspeaker with volume switch; Can play the floor channel or interpreted channel language
- ◆ With the same channel interlock function, when the output channel is preset, the occupied channel will skip

- automatically. Channel output can be set to interlock mode and free mode
- ◆ The number of interpreter console in the same room is not limited
  - ◆ Through software setting, multiple interpreter consoles can be set up in a single language channel. When the interpreter console in the same language channel turns on the microphone, the microphone of the previous interpreter terminal will be automatically turned off
  - ◆ MUTE key to enable a brief muting of the microphone for cough cut
  - ◆ Speaking Speed remind function, the interpreter can press the "slow" key to remind the speaker to slow down the speaking speed (The microphone's indicator ring or screen will flash)
  - ◆ Left and right headphone output jack (3.5 mm×2), connect the headset to listen to the floor or interpreted channel language, with left and right selection buttons; headphone volume is adjustable
  - ◆ Left and right microphone input jack (3.5 mm×2), can be connected to external microphone, with left and right selection buttons, to meet different usage scenarios
  - ◆ Left and right recording output jack (3.5 mm×2), can be connected to recording device, with left and right selection buttons, the output audio depends on the channel listened by the interpreter console
  - ◆ With message function, text message can be sent to interpreter terminal through management software
  - ◆ With call service function, interpreters can call the administrator to provide help through the interpreter console
  - ◆ Setting the interpreter console information can be locked by password, and the interpreter can use the setting function through password and IC card
  - ◆ No need independent system connection, it can be mixed connected with all conference terminals
  - ◆ Highly resistant to mobile phone interference
  - ◆ Every interpreter comes with an unique serial number and the conference system supports automatically or manually assigning ID to the corresponding equipment
  - ◆ Interpretation timing function (timing unit: hour/minute)

## ◆ Technical Specifications

Installation Way	Desktop
Connection Way	Network Cable
Display Specifications	7-inch TFT color display
Frequency Range	20Hz~20kHz
Sensitivity	-46 dBV/Pa
Equivalent Noise Level	20dBA(SPL)
Max. SPL	125dB(THD<3%)
THD	<0.05%
SNR	≥96dB
Microphone Type	Cardioid directional electret
Directivity	0°/180°: >20 dB (1 kHz)
MIC Stem Length	410mm (standard); 310mm/510mm (optional)
Input Impedance	2KΩ
Headphone Output Jack	3.5 mm jack×2
Microphone Input Jack	3.5 mm jack×2
Headphone Load	>16Ω
Headphone Volume	10mW
Built-in Loudspeaker	2W/8Ω
Channel Number	32 channel (including the floor channel)
Power supply	24V
Max. Power Consumption	7W
Working Temperature	0~45°C
Storage Temperature	-20~50°C

## RF ID Reader BR-101A

- ◆ Adopt 13.56MHz non-contact radio frequency technology, embedded NXP highly integrated read-write chip as radio frequency base station
- ◆ Support ISO14443 TYPE A standard/Mifare standard card
- ◆ Support USB to serial communication



Reader support	Mf0: Ultralight, Ultralight C, NTAG203, NTAG213 MF1: S50, S70, FM11RF08 and compatible cards
NFC parameters	Support ISO14443 TYPE A standard, Mifare standard card
Serial port protocol (UART)	Serial bit data (8), parity bit (none), stop bit (1), baud rate 19200
Volume	96×61 mm

## IC Card Encoder SRD-U100

Support read out and write down information, reset password

Speed	<0.2s
Interface	USB
Installation	Flush-mounting



## Non-Contacted IC Card NTAG213

Card size (L×W×H)	85.6×54×0.8 mm
Card rounded corners	3mm
Operating temperature	5~40°C
Working humidity	35~85%RH



## IC Card BL7442

Each card has a unique 32-bit serial number and independent password and access control. Users can set different password with software, one card for appointed conference. Data can be preserved up to 10 years and a card can be rewritten up to 100 thousand times with unlimited reading times.

Dimensions (L×W×D)	85.6x53.98x0.8mm
Operating temperature	-20°C~85°C



**Cable RJ45-0.3m/2m/5m/10m**

Type	Straight-through Cable
Length	0.3m/2m/5m/10m
Jack	RJ-45 Metal Shielded Registered Jack



**Monaural Headphone TC-D1**

Color	Black ring with embedding metal
Type	Monaural mono headphone
Interface	3.5mm
Impedance	40Ω±10%
Frequency reponse range	7 Hz - 24KHz
Voltage	0.4V
Input power	8-50mW
Distortion rate	<5%
Sensitivity	L102dB±3dB



**Stereo Headphone TC-D3**

Color	Black
Type	Stereo headphone
Interface	3.5mm
Impedance	32Ω±15%
Frequency reponse range	20-20KHz
Voltage	0.8V
Input power	30-50mW
Distortion rate	<5%

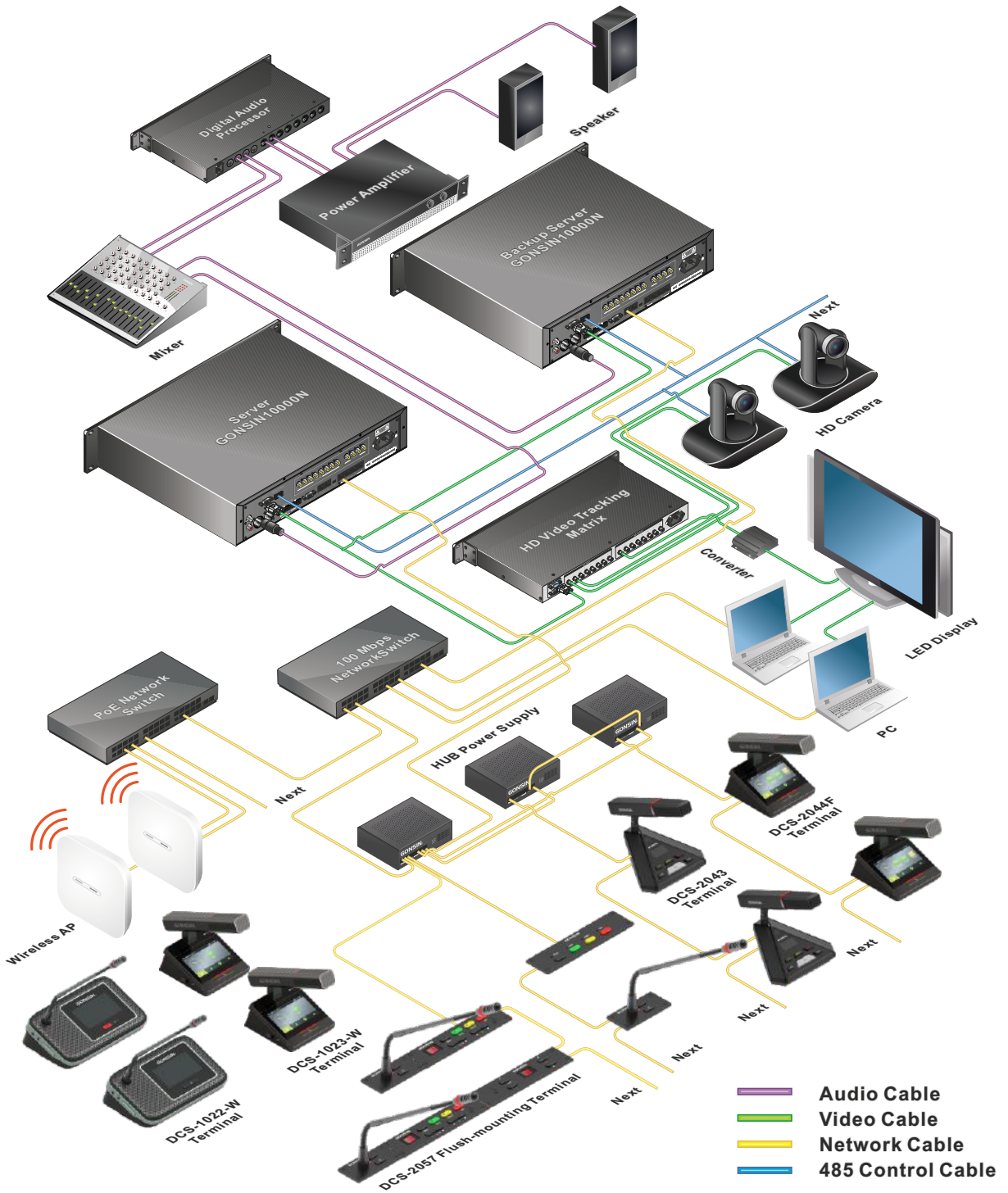


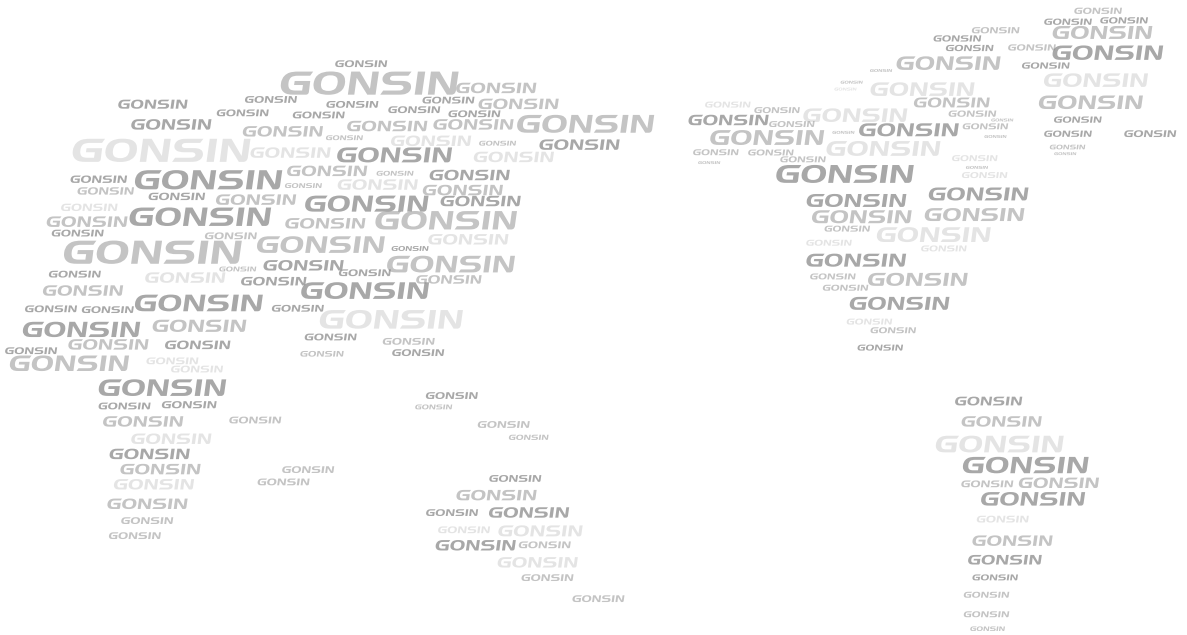
**Interpreter Headset TC-D4**

Color	Black
Type	Stereo headset
Interface	3.5mm
Impedance	32Ω±15%
Frequency reponse range	20 - 20000Hz
Voltage	0.8V
Input power	30-50mW
Distortion rate	<1%



# System Configuration





GONSIN CONFERENCE EQUIPMENT CO.,LTD.  
[www.gonsin.com](http://www.gonsin.com)



English WeChat



A03

All rights reserved. The information and specifications included are subject to change without prior notice.