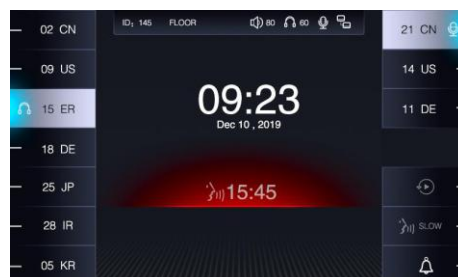


# **Interpreter Console IC-2032N**



## **Basic Functions**

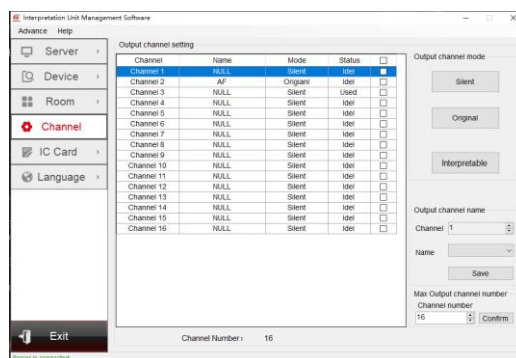
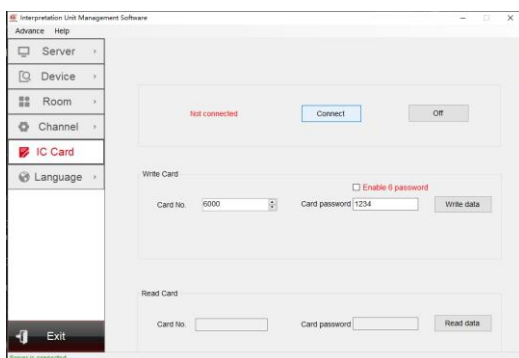
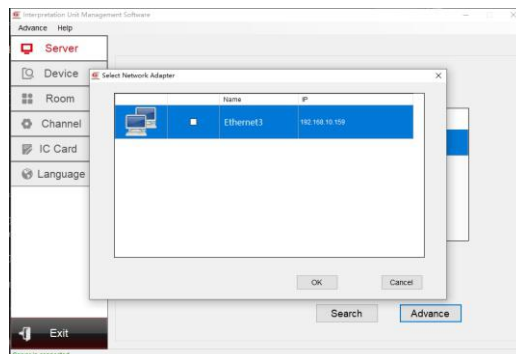
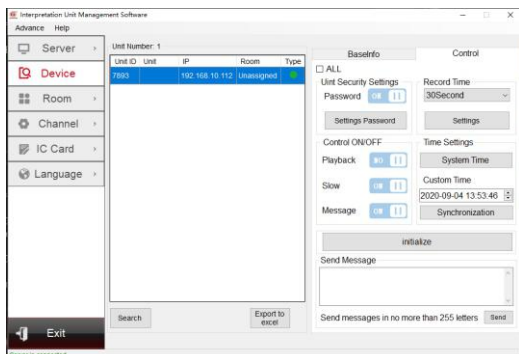
- ◆ In compliance with IEC60914 international standard
- ◆ The design of physical buttons / knobs is reasonable , which is easy to operate; The buttons / knobs are sensitive with good touch, accurate operation response, long service life and without mechanical button sound
- ◆ With fully digital audio technology, built-in high-speed CPU
- ◆ Interpreter console, conference terminal, power HUB and conference server are all connected by network cables. Flexible cabling reduces project workload and makes large-scale construction projects easier.
- ◆ It supports hand-in-hand connection, star connection and mixed connection. The system is highly stable and reliable. The breakdown of one terminal won't influence the other terminals , and the malfunction of one terminal cabling will not affect the whole system, ensuring the system stability.
- ◆ Automatic restoration function: supports hot plug
- ◆ Supports 48KHz audio sampling freq, acoustic frequency response can be up to 20Hz to 20KHz.
- ◆ Built-in high-performance digital audio processor( DSP), helpful to remove the useless low frequency and avoid low-frequency acoustical shock, which is better to improve the clarity of sound.
- ◆ Support 32 channels simultaneous interpretation(including the floor channel)
- ◆ Support direct interpretation and relay interpretation
- ◆ 7-inch TFT LCD screen to display setting information ,input and output channel information
- ◆ With channel selection button, long press to quickly increase / decrease the channel, short press to increase / decrease the channel, convenient to select channels
- ◆ 7 input channels can be preset, with corresponding shortcut keys and input channel occupation indicator
- ◆ 3 output channels can be preset , with corresponding shortcut keys. When all interpreter consoles are closed, the output channel can be automatically switched to the floor channel
- ◆ Standard cardioid directional electret microphone with indicator ring (On or Off) . Multiple soft gooseneck microphone stems can be selected (standard: 410mm, optional:310mm/510mm).
- ◆ Pluggable microphone stem; During the meeting recess, it can be disassembled for equipment maintenance.
- ◆ Built-in 2W loudspeaker with volume switch; Can play the floor channel or interpreted channel language
- ◆ With the same channel interlock function, when the output channel is preset, the occupied channel will skip automatically. Channel output can be set to interlock mode and free mode

- ◆ The number of interpreter console in the same room is not limited.
- ◆ Through software setting, multiple interpreter consoles can be set up in a single language channel. When the interpreter console in the same language channel turns on the microphone, the microphone of the previous interpreter terminal will be automatically turned off.
- ◆ MUTE key to enable a brief muting of the microphone for cough cut
- ◆ Speaking Speed remind function, the interpreter can press the "slow" key to remind the speaker to slow down the speaking speed (The microphone's indicator ring or screen will flash)
- ◆ Left and right headphone output jack (3.5 mm×2), connect the headset to listen to the floor or interpreted channel language, with left and right selection buttons; headphone volume is adjustable
- ◆ Left and right microphone input jack (3.5 mm×2), can be connected to external microphone, with left and right selection buttons, to meet different usage scenarios
- ◆ Left and right recording output jack (3.5 mm×2), can be connected to recording device, with left and right selection buttons, the output audio depends on the channel listened by the interpreter console
- ◆ With message function, text message can be sent to interpreter terminal through management software
- ◆ With call service function, interpreters can call the administrator to provide help through the interpreter console
- ◆ Setting the interpreter console information can be locked by password, and the interpreter can use the setting function through password and IC card
- ◆ No need independent system connection, it can be mixed connected with all conference terminals
- ◆ Highly resistant to mobile phone interference
- ◆ Every interpreter comes with an unique serial number and the conference system supports automatically or manually assigning ID to the corresponding equipment.
- ◆ Interpretation timing function (timing unit: hour/minute)

◆ **Technical Specifications**

Installation Way	Desktop
Connection Way	Network Cable
Display Specifications	7-inch TFT color display
Frequency Range	20Hz~20KHz
Sensitivity	-46 dBV/Pa
Equivalent Noise Level	20dBA(SPL)
Max. SPL	125dB(THD<3%)
THD	<0.05%
SNR	≥96dB
Microphone Type	Cardioid directional electret
Directivity	0°/180°: >20 dB (1 kHz)
MIC Stem Length	410mm (standard); 310mm/510mm (optional)
Input Impedance	2KΩ
Headphone Output Jack	3.5 mm jack×2
Microphone Input Jack	3.5 mm jack×2
Headphone Load	>16Ω
Headphone Volume	10mW
Built-in Loudspeaker	2W/8Ω
Channel Number	32 channel (including the floor channel)
Power supply	24V
Max. Power Consumption	7W
Working Temperature	0~45°C
Storage Temperature	-20~50°C

# Interpreter Console Management System V2.1.0



## Basic Functions

- ◆ Support interpreter console online search and numbering
- ◆ Numbering the interpreter console corresponding with interpretation room; the number of interpreter consoles in the same interpretation room is not limited
- ◆ Support name setting for the interpreted channel and corresponding language
- ◆ Support interpreter console locking mode, including password locking and IC card locking
- ◆ Support interpreter console to set SOLW function permissions
- ◆ Support interpreter console call service function(on / off)
- ◆ Support interpreter console playback function, turn on (5/10/15/30 seconds)/turn off setting
- ◆ Support the setting of the output channel after the microphone is turned off; can choose mute or monitor output
- ◆ Support interpreter console date and time synchronization
- ◆ Support 32 effective channels

GONSIN CONFERENCE EQUIPMENT CO.,LTD.  
www.gonsin.com



English WeChat



All rights reserved. The information and specifications included are subject to change without prior notice.