



Paperless Conference System

■ **Touch Control LCD Lifting Terminal with Microphone/
Touch Control LCD Lifter**
(15.6/17.3/18.5/21.5 inches)



Touch Control LCD Lifting Terminal with Microphone



Touch Control LCD Lifter



Function

- The front screen adopts 15.6/17.3/18.5/21.5-inch HD IPS full viewing angle LCD screen (depending on models), supporting 1920 x 1080 high resolution and 16:9 display ratio, providing a high-quality viewing experience. Adopting ultra-narrow edge design, the width of the upper/left/right side is only 6.5mm, the default elevation angle is 15°, and it supports continuous adjustment from 0 to 30°. Supports capacitive touch screen (depending on model). Support 10-point touch control, sensitive operation
- The front screen with optional HD camera. Expandable face recognition, photo, video, video conference and other functions. Adjustable camera angle. Adopt 5 megapixel camera, camera configuration optional (depending on the model)
- The back screen supports optional 11.6-inch, 1366 x 768 resolution, 16:9 display ratio, LCD full viewing angle LCD. Built-in electronic desktop embedded software. Can display participants' name/position/ company name/company logo and other information. Support font/background/template customization settings

- Support optional lifting microphone. Use with unit connector/paperless terminal. The microphone adopts the design of hose microphone stem, with the function of descending automatic straightening, flexible use and neat storage. Microphone with status indicator ring, with speech button and chairman button (depending on model).
- The microphone adopts high sensitivity cardioid directional electret microphone core.
- Lifter adopts low-speed micro-motor drive and silent design, lifting and lowering fast, smooth and quiet. The screen/microphone pole supports independent lifting and lowering, and supports a variety of control methods. Including but not limited to: panel manual control, lift controller control, wireless remote control, paperless control, central control system control, RS-232 control, RS-485 control, etc.. Support unified control and group control. Built-in power management embedded software, supports automatic power supply for the screen when it rises, and automatic power-off for the screen when it falls.
- Adopting all-aluminum alloy structure shell and panel, light weight and high strength. The panel supports individual control of screen/microphone lifting and lowering, with buttons for rising, pausing, descending, signal switching and switching on/off. Provide audio interface and USB interface (depending on model). Support optional voting module, simultaneous interpretation module, NFC module, fingerprint module, charging module, speaker module, etc. (depending on the model)
- Support optional voting module. Built-in voting embedded software. With buttons for registration, favor, oppose and abstain, with LED indicator. Multi-level error correction and encryption scrambling processing of data in the voting process to ensure data security.
- Support optional simultaneous interpretation function module. With channel selection button, volume adjustment button, ϕ 3.5mm headphone interface. Built-in embedded software of simultaneous interpretation receiving unit. Support 32 (1+31) channels of simultaneous interpretation function. Support the number of channels
- Support the expansion of the number of channels, the maximum can be realized 64 channels (need to add equipment support). The audio frequency response of simultaneous interpretation channel can reach 20Hz~20kHz.
- Support optional NFC module. Support close-range wireless communication with mobile terminals, NFC devices, NFC cards, smart cards, ID cards, which can be used for conference registration, identification, operation authorization, data transmission and other applications.
- Support optional fingerprint module. Support fingerprint identification function, which can be used for conference registration, identification, operation authorization and other applications.
- Support optional charging module. Support up to 20W wireless charging, compatible with a variety of wireless charging devices. Adopts multi-coil design, which can be flexibly placed for wireless charging devices. With foreign object detection function, to avoid metal foreign object error prevention leads to high temperature generation.
- Support optional high-fidelity speakers. With conference monitoring function. Can play multimedia files/music/video/video conferencing/external audio and other sounds. Speaker configuration optional (depending on model)
- With 1 channel HDMI and 2 channel VGA signal input interface, support signal automatic identification and signal switching. No signal input, the screen automatically enters the power saving mode
- With 2-way RS-232/485 control interface (1-way output, 1-way input)
- AC220V \pm 10% 50Hz voltage, with power ring outlets, can effectively reduce the power workload

Technical Parameters

Lifter Parameters	
Lifting Time	LCD:30 seconds, microphone:50 seconds
LCD Angle	Default 15°, adjustable within 0~30°
Control Mode	Panel manual control, lifting controller control, wireless remote control, paperless control, central control system control, RS-232 control, RS-485 control
Communication Distance	Remote control: 30 meters, RS-232: 15 meters, RS-485: 1200 meters
Front LCD Screen Parameters	
Resolution	1920×1080
Brightness	220cd/m ²
Contrast Ratio	800:1
Screen Viewing Angle	85°/85°/85°/85° (up/down/left/right)
Display Interface	HDMI+VGA, automatic recognition/panel key switching
Back Screen Parameters	
Size	11.6 inches,256mm(H)×144mm(V)
Resolution	1366×768
Brightness	300cd/m ²
Contrast Ratio	600:1
Screen Viewing Angle	85°/85°/85°/85° (up/down/left/right)
Touch Screen Parameters	
Touch Type	Capacitive touch screen, 10-point touch
Surface hardness	7H
Anti-static contact discharge	4KV
Touch Screen Transmittance	>90%
Response time	<5ms
Touch Life	>50 million times
Microphone Parameters	
Microphone Type	Cardioid Directional Electret
Directionality	0°/180°: >20dB (1kHz)
Effective Pickup Distance	≥80cm
Microphone Stick Length	450mm
Audio Frequency Response	20Hz~20kHz
Sensitivity	-46 dBV/Pa
Equivalent Noise Level	20dBA (SPL)
Maximum Sound Pressure Level	125dB (THD<3%)
Total Harmonic Distortion	<0.05%
Signal-to-Noise Ratio	≥96dB
General Parameters	
Color	Sandblasted black/silver, brushed black/silver (customizable)
Material	Aluminum alloy panel + aluminum alloy chassis
Power	Voltage AC220V±10% 50Hz (customizable AC110V)
Maximum Power	25W

Product Model	GX-LF156CX-X	GX-LF156DX-X
	GX-LF156CD-X	GX-LF156DD-X
Screen Size	375×250mm	375×250mm
Thickness	5mm (thinnest) / 8mm (thickest)	5mm (thinnest) / 16mm (thickest)
Panel Size (L×W×H)	555×70×3mm	555×70×3mm
Box size (L×W×H)	539×60×647mm	539×60×647mm
Package Size (L×W×H)	608×132×750mm	608×132×750mm
Product Net Weight	14kg	14.2kg
Gross Weight	16.5kg	16.7kg

Product Model	GX-LF173CX-X	GX-LF173DX-X
	GX-LF173CD-X	GX-LF173DD-X
Screen Size	406×265mm	406×265mm
Thickness	5mm (thinnest) / 8mm (thickest)	5mm (thinnest) / 16mm (thickest)
Panel Size (L×W×H)	601×70×3mm	601×70×3mm
Box size (L×W×H)	585×60×647mm	585×60×647mm
Package Size (L×W×H)	660×132×750mm	660×132×750mm
Product Net Weight	15kg	15.2kg
Gross Weight	17.5kg	17.7kg

Product Model	GX-LF185CX-X	GX-LF185DX-X
	GX-LF185CD-X	GX-LF185DD-X
Screen Size	446×285mm	446×285mm
Thickness	10.5mm	10.5mm
Panel Size (L×W×H)	629.5×70×3mm	629.5×77×3mm
Box size (L×W×H)	615×60×716mm	615×66×716mm
Package Size (L×W×H)	690×132×815mm	690×132×815mm
Product Net Weight	16kg	16.2kg
Gross Weight	19kg	19.2kg

Product Model	GX-LF215CX-X	GX-LF215DX-X
	GX-LF215CD-X	GX-LF215DD-X
Screen Size	515×320mm	515×320mm
Thickness	5mm (thinnest) / 15mm (thickest)	5mm (thinnest) / 15mm (thickest)
Panel Size (L×W×H)	700×77×3mm	700×77×3mm
Box size (L×W×H)	685×66×717mm	685×66×717mm
Package Size (L×W×H)	760×132×815mm	760×132×815mm
Product Net Weight	19kg	19.2kg
Gross Weight	22.5kg	22.7kg

Product Model	GX-LF156-X	GX-LF173-X
Screen Size	375×250mm	406×265mm
Thickness	5mm (thinnest) / 8mm (thickest)	
Panel Size (L×W×H)	430×70×3mm	476×70×3mm
Box size (L×W×H)	415×60×562mm	461×60×562mm
Package Size (L×W×H)	488×132×660mm	538×132×660mm
Product Net Weight	7kg	8kg
Gross Weight	9kg	10kg

Product Model	GX-LF156B-X	GX-LF173B-X
Screen Size	375×250mm	406×265mm
Thickness	5mm (thinnest) / 16mm (thickest)	
Panel Size (L×W×H)	430×70×3mm	476×70×3mm
Box size (L×W×H)	415×60×562mm	461×60×562mm
Package Size (L×W×H)	488×132×660mm	538×132×660mm
Product Net Weight	7.2kg	8.2kg
Gross Weight	9.2kg	10.2kg

Product Model	GX-LF185-X	GX-LF215-X
Screen Size	446×285mm	515×320mm
Thickness	10.5mm	5mm (thinnest) / 15mm (thickest)
Panel Size (L×W×H)	510×70×3mm	582×77×3mm
Box size (L×W×H)	495×60×647mm	560×66×647mm
Package Size (L×W×H)	565×132×745mm	635×132×745mm
Product Net Weight	9kg	12kg
Gross Weight	11.5kg	14.5kg

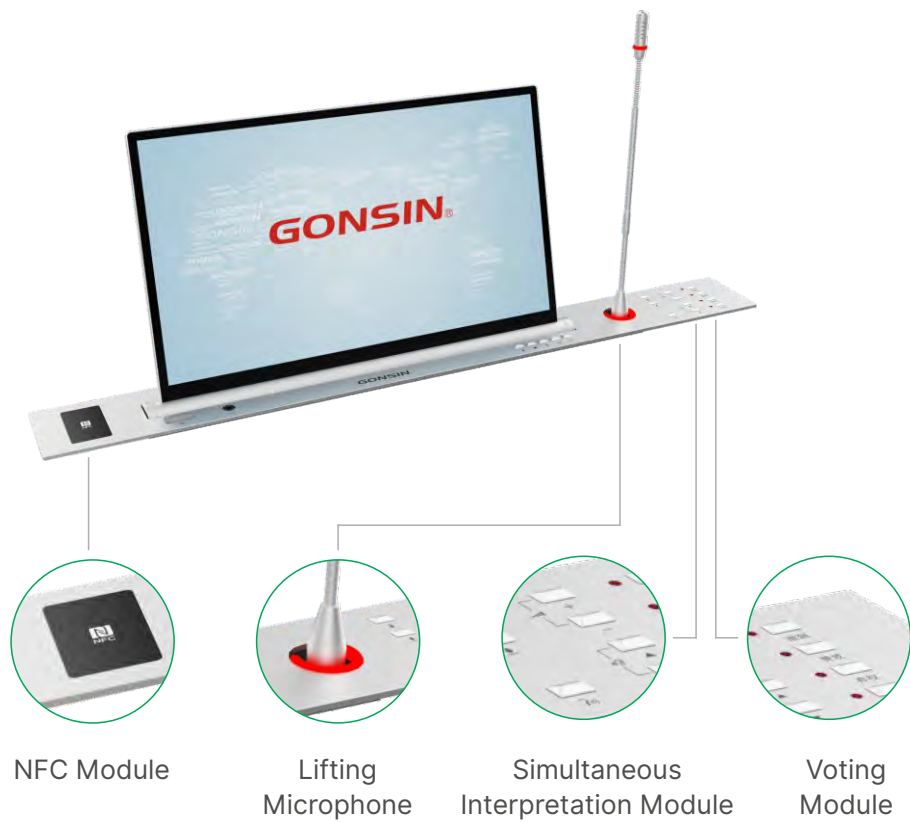
Product Model	GX-LF185B-X	GX-LF215B-X
Screen Size	446×285mm	515×320mm
Thickness	10.5mm	5mm (thinnest) / 16mm (thickest)
Panel Size (L×W×H)	510×70×3mm	582×77×3mm
Box size (L×W×H)	495×66×647mm	560×66×647mm
Package Size (L×W×H)	565×132×745mm	635×132×745mm
Product Net Weight	9.2kg	12kg
Gross Weight	11.7kg	14.7kg

Model Function List

Product	Model	Size (inches)	Discussion Function	Back Screen Size (inches)	MIC Type	
LCD Lifter	GX-LF156-X	15.6	-	-	-	
LCD Lifting Chairman Terminal with MIC	GX-LF156CX-X		✓		11.6	Chairman
LCD Lifting Delegate Terminal with MIC	GX-LF156CD-X		✓			Delegate
Dual-screen LCD Lifter	GX-LF156B-X		-	11.6	-	
Dual-screen LCD Lifting Chairman Terminal with MIC	GX-LF156DX-X		✓		Chairman	
Dual-screen LCD Lifting Delegate Terminal with MIC	GX-LF156DD-X		✓		Delegate	
LCD Lifter	GX-LF173-X	17.3	-	-	-	
LCD Lifting Chairman Terminal with MIC	GX-LF173CX-X		✓		11.6	Chairman
LCD Lifting Delegate Terminal with MIC	GX-LF173CD-X		✓			Delegate
Dual-screen LCD Lifter	GX-LF173B-X		-	11.6	-	
Dual-screen LCD Lifting Chairman Terminal with MIC	GX-LF173DX-X		✓		Chairman	
Dual-screen LCD Lifting Delegate Terminal with MIC	GX-LF173DD-X		✓		Delegate	
LCD Lifter	GX-LF185-X	18.5	-	-	-	
LCD Lifting Chairman Terminal with MIC	GX-LF185CX-X		✓		11.6	Chairman
LCD Lifting Delegate Terminal with MIC	GX-LF185CD-X		✓			Delegate
Dual-screen LCD Lifter	GX-LF185B-X		-	11.6	-	
Dual-screen LCD Lifting Chairman Terminal with MIC	GX-LF185DX-X		✓		Chairman	
Dual-screen LCD Lifting Delegate Terminal with MIC	GX-LF185DD-X		✓		Delegate	
LCD Lifter	GX-LF215-X	21.5	-	-	-	
LCD Lifting Chairman Terminal with MIC	GX-LF215CX-X		✓		11.6	Chairman
LCD Lifting Delegate Terminal with MIC	GX-LF215CD-X		✓			Delegate
Dual-screen LCD Lifter	GX-LF215B-X		-	11.6	-	
Dual-screen LCD Lifting Chairman Terminal with MIC	GX-LF215DX-X		✓		Chairman	
Dual-screen LCD Lifting Delegate Terminal with MIC	GX-LF215DD-X		✓		Delegate	
LCD Lifter	GX-LF238-X	23.8	-	-	-	

Paperless Conference Function	Realize:conference registration, conference voting, conference evaluation, fast voting, document browse, annotation, message communication, conference service, streaming media viewing, paperless screen-shring, electronic whiteboard, on-site control, note book,etc,.
Registration & Voting Function	1.In paperless software, registration and voting are defaultly achieved through touch screen. 2.Touch Control LCD Lifter can be customised, realizing registration and voting functions by pressing the buttons on the panel, which can be synchronised with the software.
Simultaneous Interpretation Function	1.Paperless software does not support simultaneous interpretation function by default. 2.Touch Control LCD Lifter can be customised to add headphone jack and simultaneous interpretation button.
NFC Recognition Function	1.Paperless software does not support NFC function by default. 2.Touch Control LCD Lifter can be customised to add NFC module.

Optional Modules





◆ Microphone Lifting All-in-one Terminal

GX-LFM5600X-X/GX-LFM5600D-X

Function

- ◆ Work with connectors of chairman unit DCS-CON2057X and delegate unit DCS-CON2057D
- ◆ Work with connectors of chairman unit CON-X5600-W and delegate unit CON-D5600-W
- ◆ Auto straightening for MIC when lifting down
- ◆ 5 modes of microphone discussion : Apply for waiting /Restrict to speak/ FIFO/ VOX/ Request to speak(with software)
- ◆ In VOX mode, microphones will be activated as users speak. VOX sensitivity (high/middle/low) and MIC time-out can be adjusted by the server. It can be automatically turned off by setting in advance. Besides the chairman unit, 4 delegate units can be activated at the same time.
- ◆ Electret cardioid directional microphone brings better sound quality.
- ◆ Highly resistant to mobile phone interference
- ◆ Auto camera tracking with preset panoramic position; SD/HD camera tracking is supported
- ◆ The system supports auto repairing and hot sweeping
- ◆ Co-work with software, speaking time can be managed based on situation
- ◆ **Based on the functions of delegate unit, chairman unit has the functions below:**
- ◆ Chairman unit can be turned on freely without restriction on the number of microphones when turning on.
- ◆ Chairman unit has the priority function that can interrupt or turn off the delegate unit when speaking.



Technical Parameters

Microphone	
Type	Cardioid directional electret
Frequency response	20Hz~20kHz
Max SPL	125dB(THD<3%)
Dynamic range	>85dB
VOX sensitivity	H/M/L(76dB/80dB/82dB)
Sensitivity	-46dB±4dB
THD	<0.05%
SNR	≥96dB
MIC length	450mm
Lifter	
Lifting up/down time	54s
Control mode	Manual control, wireless remote control, RS-232 control, RS-485 control
Communication distance	wireless remote control:30m; RS-232: 15m; RS-458: 1200m
General parameters	
Color	Sandblasting silver (other colors can be customized)
Material	Aluminum alloy
Power	Voltage AC220V±10%50Hz(AC110V customizable)
Max Power	25W
Working temperature	0~45°C
Storage temperature	-20~50°C
Relative humidity	Not more than80%(20°C environment)
Product size	160×70×720mm
Panel size	160×70×3mm
Case size	143×60×717mm
Package size	835×250×145mm(carton)
Net weight	3kg
Gross weight	4kg



◆ Lifting Controller GX-TP40-D



◆ Basic functions

- ◆ Built-in lifter control program, which can control the lifter uniformly
- ◆ 86 box design, easy to install
- ◆ No operating system, with Android display effects and experience
- ◆ 480×480 resolution
- ◆ Capacitive touch
- ◆ 5-36V power supply
- ◆ RS485 communication mode
- ◆ The product size:90.80×90.80×27.65mm

◆ Technical Specifications

Screen size	4"
Resolution	480×480
color	65K colors, 16-bit RGB
Display type	TFT LCD
Brightness	250cd/m ²
Backlight tube	led
Backlight life (average)	>20,000 hours
Contrast	800:01:00
Perspective	80/80/80/80
Installation method	National standard 86 bottom box
Communication Interface	Rs485
Touch	Capacitive touch screen
Number of touches	unlimited
Power consumption	Sleep: 0.4W; the darkest without speaker: 1.5W; the brightest without speaker: 2.4W
Voltage input	9~36V
Operating temperature	0~40°C
Storage temperature	-20~+70°C
Size (W×D×H)	90.80×90.80×27.65mm
Net weight	90g

Connector DCS-CON2057X/DCS-CON2057D



Basic functions

- ◆ In compliance with IEC60914 international standard, utilize digital audio processing and transmission technology
- ◆ Co-work with Microphone Lifting All-in-one Terminal
- ◆ Realize the communication between basic discussion module and the server
- ◆ Connector, basic discussion module, power HUB and congress server are all connected by cable. Flexible cabling reduces project workload, makes large-scale construction easier.
- ◆ It supports daisy-chain connection, star connection and mixed connection. The system is highly stable and reliable. The break down of one extension won't influence the other extensions, and the malfunction of one attachment among the extensions won't influence the system work.
- ◆ Automatic restoration function: supports hot plug.
- ◆ When there is only basic discussion module, it requires the connectors; when the basic discussion module is extended to other terminal, it do not require the connector.

Technical Specifications

Panel Dimension(L×W×H)	140×40×130mm
Color	Black
Interface	3×RJ45 Connector
Power Supply	DC 24V, POWER BY Sever/HUB
Max Power Consumption	6.4W
Weight	0.6kg
Operating Temperature	0~45°C
Storage Temperature	-20~50°C

For the product introduction of GONSIN10000N Server, please refer to the catalog of "10000N Series Seamless Compatible Wired and Wireless Conference System"

Connector DCS-CON2062D



Basic functions

- ◆ Co-work with Touch Control LCD chairman/delegate lifter to realize discussion functions
- ◆ Support independent adapter to supply power and GONSIN10000N system distributed power and intelligent grouping management
- ◆ Conference terminal, power HUB and conference server are all connected by net cable. Flexible cabling reduces project workload, makes large-scale construction easier.
- ◆ It supports daisy-chain connection, star connection and mixed connection. The system is highly stable and reliable. The break down of one extension won't influence the other extensions, and the malfunction of one attachment among the extensions won't influence the system work.
- ◆ Automatic restoration function: supports hot plug.

Paperless Terminal Connector Configuration

- ◆ Attendance registration function: registration is initiated and ended by paperless terminal(chairman), the results can be displayed on LCD screen.
- ◆ Voting function: started and ended by paperless terminal(chairman), the results can be display on LCD screen.
- ◆ Customized voting function: The paperless terminal(chairman) can initiate and end the customized voting, voting results can be displayed on paperless terminal. The voting content is defined by GONSIN Intelligent Conference management software.
- ◆ Call service: participants place a call via paperless terminal. The service staff will provide the service in according to the request displayed on the paperless call service terminal. Basic functions: paper, pen, tea, towel and etc, the functions can be customized.
- ◆ Browsing conference files: before the conference, the digital files could be preset on the paperless terminal, the user could open and browse the files; it supports DOC, DOCX, PDF, PPT, PPTX, JPG, PNG, BMP, MP3, MP4, AVI, FLV, WMV and other format files. Files can be displayed in screen sharing status.
- ◆ Sharing screen: when the user is browsing the files via paperless terminal, it can share the screen and other terminals could display the same content, including page scroll, paging, notes and others operation.
- ◆ Files note function: users can make notes on files, notes can be saved in the server.
- ◆ Screen sharing and synchronizing screen function: user can initiate screen sharing, all terminals will be displayed the same content; After exit from the sharing screen, user can synchronize the screen to the sharing one manually. The sharing content can be displayed on other display device simultaneously.
- ◆ Support internal messages function, user can communicate via sending internal messages
- ◆ Support digital whiteboard function, user can create whiteboard quickly, the content will be saved in the server.
- ◆ Support surfing the internet via the browser.
- ◆ Support reading files from USB flash disk
- ◆ Support connection to exterior video by code
- ◆ System capacity: unlimited(wired connection)
- ◆ The serial-number is one and only, the conference system supports automatically or manually assign ID to the corresponding equipment.

- ◆ Randomly set any one terminal as Chairman Terminal

More functions of The Paperless Chairman Terminal are as below.

- ◆ Support sending mass system messages to all paperless delegate terminals.
- ◆ Support managing the conference topic, allow user to initiate the registration and voting.
- ◆ Allow user to initiate quick voting
- ◆ Support mandatory sharing screen
- ◆ Check conference information, such as voting process and result, call service information, screen sharing information and etc.

Discussion System

- ◆ With headphone jack (Ø 3.5 mm) and adjustable volume (9 levels).
- ◆ Built-in MIC (Ø 3.5 mm) to connect with external MIC, which meets the requirements of different usage scenarios.
- ◆ Supports 48kHz audio sample freq, acoustic frequency response can up to 20Hz~20kHz.
- ◆ AF sensitivity of each terminal (7 levels) can be adjusted separately or uniformly.
- ◆ Built-in high-performance DSP digital audio processor, helps remove the useless low-frequency and avoid low-frequency acoustical shock, which better improve the sharpness of sound.
- ◆ Microphone modes: VOX, Auto, FIFO, Operator.
- ◆ VOX mode: in VOX mode, the unit will be activated for user speaks; VOX sensitivity can be adjust by the server (high, middle, low); microphone time-out is adjustable (20-250 seconds).
- ◆ 1-4 delegate unit can be used except the chairman unit
- ◆ Supports automatic video tracking (SD and HD), with preset panoramic position. Perfect matched with camera or plug-in video.
- ◆ Support 32 (1+31) channels simultaneous interpretation
- ◆ Select interpretation channel and adjust volume on paperless LCD screen
- ◆ Acoustic frequency response can up to 20Hz~20kHz.

More functions of The Paperless Chairman Terminal are as below.

- ◆ Chairman terminal can be activated at any time without presetting mic limit
- ◆ Chairman priority button to override all active delegate terminals

◆ Technical Parameters

Universal Specifications		Discussion	
Installation	Hidden Installation	Frequency Response	20Hz~20kHz
Connection Method	Cable	Sensitivity	-46 dBV/Pa
System	Android	VOX Sensitivity	H/M/L(76dB/80dB/82dB)
Dominant Frequency	1.8G	db	20dBA(SPL)
Memory	2G, DDR3	Max SPL	125dB(THD<3%)
Internal Storage Capacity	8GB	THD	<0.05%
Interface	USB×3/HDMI×2/RJ45×2/ 3.5 mm stereo jack×1	SNR	≥96dB
Power	24V	Simultaneous Interpretation	
Power Supply	Adapter/Server/Power HUB	Frequency Response	20Hz~20kHz
Max Power Consumption	25W	THD	(THD)<0.3%
Operating Temperature	0~45°C	SNR	≥95dB
Storage Temperature	-20~50°C	Channel	32channel

◆ Paperless Terminal GX-PET304A



◆ Basic functions

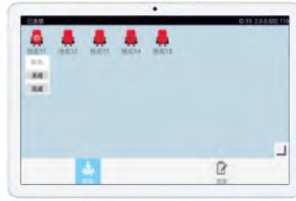
- ◆ With paperless meeting terminal software, paperless meeting functions can be realized. Functions include but not limited to: registration, voting, evaluation, quick voting, document browsing, annotation, message, conference services, streaming viewing, screen sharing, electronic whiteboard, site control, video conferencing, notepad, simultaneous interpretation, voice transcription, voice control, etc. (some functions need equipment support)
- ◆ Black metal chassis design for durability with mounting holes for easy installation (varies by model). Co-work with Touch Control LCD Lifting Terminal with Microphone, Touch Control LCD Lifter, and Desktop All-in-one Terminal, to realize paperless function.
- ◆ Support DC power supply. Linear voltage regulator circuit with over-voltage protection, safe and reliable. Built-in power management embedded software to monitor the voltage status of the equipment and realize equipment operation and maintenance management.
- ◆ Each terminal has unique unit ID; the conference system can assign unit ID to conference terminal automatically or manually
- ◆ Any terminal can be set as the chairman, vice-chairman, secretary terminal (with no limit on the quantity). With control functions, such as registration, voting, screen sharing, etc.

◆ Technical Parameters

Model	GX-PET304A
Operating System	Android
CPU	RK3568, Quad-core Cortex-A55 up to 2.0GHz
GPU	Mali-G52
Memory	4GB DDR4 on board
Internal Storage	64GB eMMC on board
Interfaces	HDMI×1, VGA×1, USB_2.0×4, USB-3.0×2, Line_out×1, Mic_in×1
Networking	RJ45×1, support Ethernet 10/100/1000Mbps
Power Supply	Adapter power supply, input AC100~240V, 50~60Hz, output DC12V2A
Maximum Power Consumption	20W
Dimension	155×108×30mm
Material	Plastic + Aluminium
Color	Black
Installation	Desktop, VESA rack mounting (optional)
Operating Temperature	0~60℃
Storage Temperature	-10~60℃
Operating Humidity	0%-95%(non-condensing)
Storage Humidity	0%-95%(non-condensing)

◆ Paperless Call Service Terminal

GX-PST403



GX-PST403

◆ Basic functions

- ◆ In compliance with IEC60914 international standard
- ◆ Ergonomic design, integrated metal body, micro sand spraying with good touch, high curvature arc closing design on the side for more comfortable holding experience
- ◆ 10.1 inches, Full HD ,with 1920×1200 high resolution for high quality image display
- ◆ Narrow frame design, more than 80% screen-to-body ratio, with a large screen
- ◆ Caring of eyes with blue light filtering
- ◆ Dual speaker setting, high quality stereo for better restoring the sound details clearly
- ◆ Capacitive touch screen, support ten-point touch control, sensitive operation, providing a good use experience
- ◆ Call service: participants place a call via paperless terminal. The service staff will provide the service in according to the request displayed on the paperless call service terminal. Basic functions: paper, pen, tea, towel and etc, the functions can be customized.
- ◆ Support to check on-site seat : according to the layout of the venue, the on-site seating chart can be displayed, and the service information can be displayed directly on the screen, so that the service personnel can provide services accordingly

◆ Technical Parameters

Product Model	GX-PST403
Operation System	Android
CPU	Hisilicon Kirin 710A
RAM	4GB
ROM	64GB
Screen	10.1 inches,resolution 1920×1200
Screen Type	Full-view IPS capacitive touch screen ; Support ten-points touch
Connection Mode	2.4G + 5.8G Dual Band WiFi,Bluetooth
USB Interface	Type-C
Audio Interface	USB Type-C
Microphone	1
Speaker	2
Rear Camera	500W
Front Camera	200W
Battery Capacity	5100mAh
System Capacity	One wireless AP supports 35 seats; It can be expanded to 65025 seats by expanding wireless AP
Local Video Playing Time	Appr.9 hours <small>note: this is based on experiment condition, the actualplaying time counts on the practical situation</small>
Dimension(W×H×T)	240.2mm×159mm×7.55mm
Net Weight	Appr.460g(battery included)
Operating Temperature	0~35°C
Storage Temperature	-20~45°C

◆ Paperless Server GX-DS302



◆ Basic functions

- ◆ In compliance with IEC60914 international standard.
- ◆ All the equipment are connected by cable. Flexible cabling reduces project workload, makes large scale construction easier.
- ◆ Automatic restoration function: supports hot plug.
- ◆ Stable and reliable performance, full-metal design with aluminum alloy panel, the chassis can resist contact 4KV strong magnetic interference, air gap 6Kv electromagnetic interference, AC100-240V wide voltage input
- ◆ Has stable and reliable performance, adopts aluminum alloy panel, all-metal design, chassis can resist contact 4KV strong magnetic interference, air gap 6Kv electromagnetic interference, AC100-240V wide voltage input.
- ◆ Rich interfaces: 2×1000M LAN, 6×COM, 10×USB, 8×GPIO (built-in), 1×VGA, 1×HDMI, 1×PCIEx16 slot, 1×Msata slot, 1×Mini- PCIE slot.
- ◆ Support watchdog hardware reset function.
- ◆ The congress file format supports DOC, DOCX, PDF, PPT, PPTX, XLS, XLSX, JPG, PNG, BMP, MP3, MP4, AVI, FLV, WMV and other general document format.
- ◆ To process and manage all data, command code and function setting for paperless system.
- ◆ Support paperless congress terminal management, search and detect online terminals.
- ◆ Support participant data management, which can realize two modes of offline creation and online creation
- ◆ Support seat setting, create conference room map, seat arrangement, customized editing.
- ◆ Support congress management, create congress agenda, set congress time and place.
- ◆ Support conference topic management, attendance registration, voting, grading, evaluation, election function, support multi-topic voting and other customized functions.
- ◆ Support customized user interface's color and size, background, style, data connection and others

◆ Technical Specifications

Installation Method	4U standard rack or desktop
Material	aluminum alloy panel, SGCC galvanized steel plate, environmental protection exterior paint, fingerprint resistance
Operating System	Windows Server 2008 Trial
CPU	Intel Core i5 processor, 6M cache, quad core 4 threads, up to 3.20GHz
Memory	8G DDRIII, maximum support 16G
SATA	1TB SATA
Display Port	1×HDMI, 1×VGA
Ethernet	2×LAN 1000M
USB Port	2×USB 3.0, 8×USB 2.0 (4 of which are built-in)
Audio Port	1×Mic_in, 1×LINE_OUT
Control Port	2×RS-232, 1×PS/2
Expansion Port	1×PCI-E X16, 1×Mini-PCIE, 4×RS-232, 4×GPO, 4×GPI4
Keyboard	Pull-out integrated keyboard and mouse
Display	Built-in 8.9LCD, 1024×600DPI, 250 cd/m ²
Touch Screen	10-point industrial capacitive touch screen
Optical Drive	ultra-thin DVD optical drive
Power Supply	AC100~240V, 50/60Hz
Power	300W
Color	Industrial Black
Dimensions (L×W×H)	482×305×195mm (without panel handle)
Weight	15kg
Operating Temperature	0~60°C
Storage Temperature	-20~70°C
Operating Humidity	0~95% relative humidity, non-condensing
Storage Humidity	0~95% relative humidity, non-condensing

Encoder GX-SMI302C-C



Basic functions

- ◆ Adopt all-aluminum profile shell, stable structure; front panel with reset button, power input interface and dip switches (only for custom development)
- ◆ 2-way 3.5 audio interface
- ◆ 1-way RS-485 serial communication interface, support PTZ function
- ◆ 1-way VGA input interface, VGA interface compatible with VGA/XGA/UVGA/SVGA/SXGA/SXGA+/WXGA/WXGA+/WSXGA/WUXGA and other types of video sources, and support for some special resolution inputs
- ◆ With 1-way HDMI input interface, HDMI interface compatible with HDMI version 1.4 and the following video sources
- ◆ With 1-way LAN network interface, support for 100M network card
- ◆ With 1-way USB interface, easy to connect the USB interface devices, support for USB extended storage
- ◆ Support APP software management and control, support Web page end management and control
- ◆ Built-in multimedia conference management software. With the use of conference room screen, computer, video conferencing, video cameras and other signals input to the paperless system display
- ◆ With stable and reliable, high-definition, low bit rate, low latency and other technical features
- ◆ Support the highest 1080P60Hz full HD video acquisition and encoding, resolution auto-detection
- ◆ Support SDI/HDMI embedded audio coding, while supporting 3.5mm analog audio input coding
- ◆ Supports dual stream output, the main stream supports up to 1080P60, and the sub stream supports up to 720P60.
- ◆ Main and sub streams can be opened at the same time 8 streaming services (can be pushed at the same time streaming 8 live platforms)
- ◆ Support video rotation/cropping (e.g. horizontal to vertical screen), horizontal mirroring, color adjustment and other specialized processing before encoding.
- ◆ Support customized graphic overlay, can be superimposed on any position of the screen
- ◆ H.264 encoding, support for SRT Internet point-to-point transmission, support for Caller / Listener / Rendezvous three transmission modes
- ◆ Support RTP/RTSP/RTMP/RTMPS/ HLS / TS - UDP /Onvif and other international common streaming service mode output
- ◆ Support unicast, multicast; support TCP, UDP, UDT and other protocols
- ◆ Support NAS network storage
- ◆ Support 24h working mode

◆ Technical Specifications

Video Input Interface	1×VGA +1×HDMI
Audio Input Interface	1×3.5mm audio terminal
USB Input Interface	1×USB 2.0 Type-A female connector
Audio Output Interface	1×3.5mm audio terminal
Transmission Method	Wired/Satellite
Network Interface	RJ45 100M
Serial communication	RS485
Supported Resolution	1080P/1080i/720P/480P/576P/480i/576i (up to 60Hz) Compatible with VESA display resolution up to 1920×1200@60Hz
Video Encoding	H264/AVC, Motion-JPEG
Audio Encoding	AAC/ G.711
Video Frame Rate	1~60 frames can be set
Video Bit Rate	64Kbps~20Mbps
Encoding Latency	<67ms
Media Protocol Support	SRT/RTMP/HLS/TS over UDP/RTP/RTSP/Onvif
Management Method	APP/ Web Operation (IE Browsing)
Power Supply	DC 12V 1A
Power Consumption	4W



◆ GONSIN Intelligent Conference Management Software V7.1.0



GONSIN intelligent conference management software V7.1.0 is a sort of background management software for pre-conference, conference, after-conference periods. It bases on networked and digital design, comes with conference data entry, conference management, conference data analysis and other functions. It also provides simple visual operation interface, supports customized interfaces, is easy to use.

Software can operate on the mainstream WIN7/WIN8/WIN10 operation system, easily realize intelligent and human-friendly effective conference management.

◆ System Features

■ Networked, Digital System Platform

Based on networked and digital design, it connects to conference devices in operation to realize the real-time interaction between management software and device data.

The software is based on modular design, covering a full range of products' functions. It supports customized setting and function modular in according to users' demands.

■ Equipment Management

Users can search and set conference equipment by the software to realize central management. After started up, the software will search to the server device in the network and automatically connect to the server.

■ Intelligent Participants' Data Creation

If there is discontinuous number of conference devices and make it difficult to create participants' data, users can create participants' data with one click.

■ Conference Topic Creation

It supports conference topic creation and topic voting. Users can preset conference topic, edit conference's name, data, place, content and other information, set conference discussion, conference voting and others by conference management software to satisfy the actual conference demands.

■ Data Management After Conference

After the end of conference, users can analyse and manage the data by the software, including data checking, data backup export. The conference content could be printed.



◆ Function Introduction

■ Language Setting

It supports language setting, after the installation, user can Select the cooresponding language. Customized language is supported.

■ Conference Preparation

Support information entry, scuh as equipment management, staff data, camera setting, seating setting, card writer, language setting, conference information, topic, attendees, customize screen and etc.

■ Hold Conference

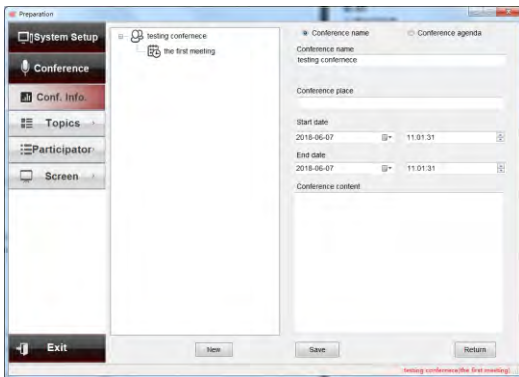
Provide multiple screen display and system control functions, such as attendance registration, topic management, discussion control and etc.

■ After Conference Process

After the end the conference, it begins the after-conference information process, the functions include: conference information saving, delegate information management, attendance registration information management(delegate list, delegate checking, print report and etc), voting results management(voting, evaluation, election, check or print grading results), and others.

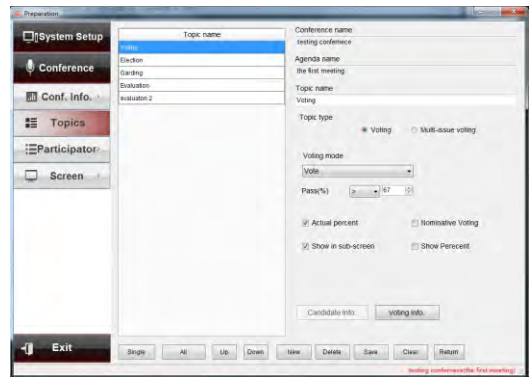
- Compatible with other devices from GONSIN, satisfy the demand for operation of various equipments.

- Network-based design, suitbale for WIN7/WIN8/WIN10 operation system



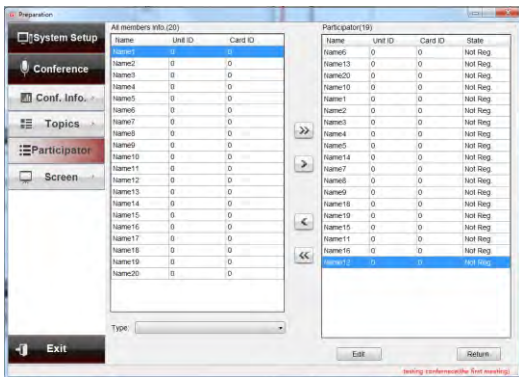
Conference Information:

user can create a new conference name and relative content, supports editing, deleting conference content.



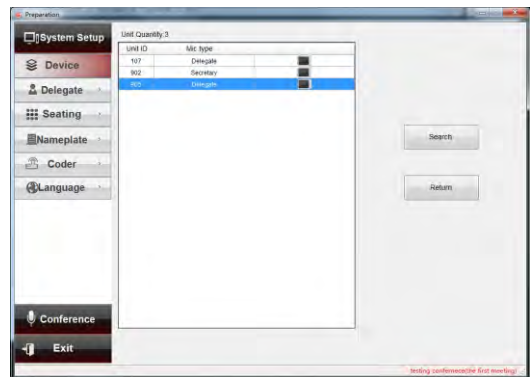
Conference Topic:

users can set the conference topic and relative contents, upload conference files in according to conference agenda.



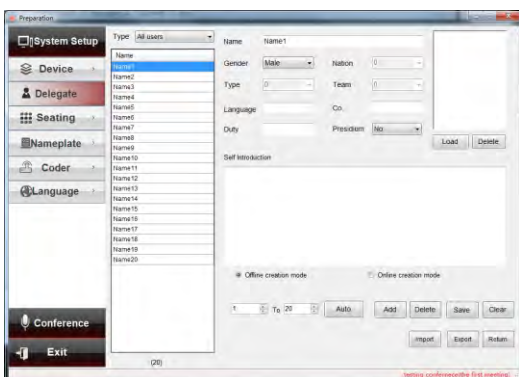
Participants:

user can select the participants from a person list.



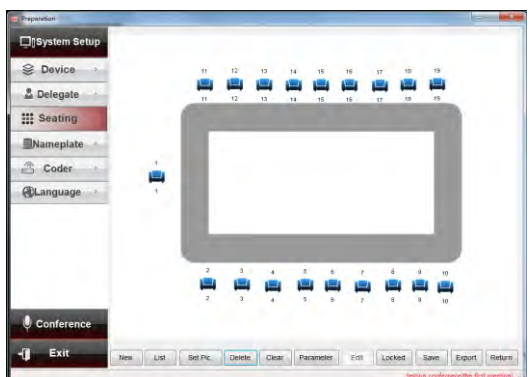
Equipment management:

in this interface, users can search the online equipments.



Person Data:

in according to the online equipments, users can create person data, such as name, gender, position, seat number, and support adding, deleting, clearing of participants' data.



Seat Setting:

users can set the seats in according to the conference venue, make the management more convenient.

◆ Paperless Conference Terminal Software V2.0

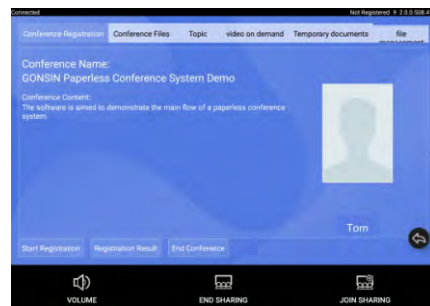
◆ Function Introduction

Paperless conference terminal software can realize digital conference file management, files interaction, checking and sharing. Paperless conference terminal support touch control function, participants can write notes, share the screen. It supports attendance registration, voting, and customized voting, call service, internal message sending and others function within the system. The paperless conference terminal software can appoint any paperless terminal as the chairman/delegate terminal, which make conference management more easier.

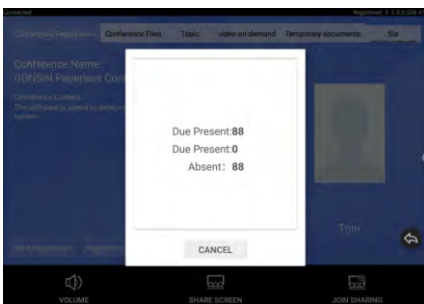
- ◆ Support interface setting for different positions.
- ◆ Support accessible paperless server
- ◆ Support automatic check for updates in each operation
- ◆ Support compatible operation with wired terminals and wireless terminals



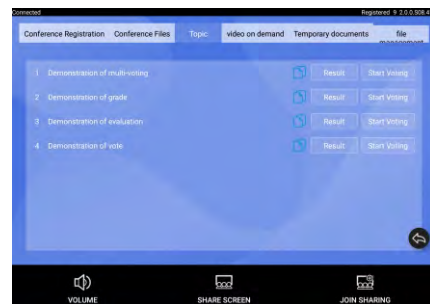
Paperless terminal (chairman) interface: display conference overview, participant's information, initiate registration, send message to all paperless terminals, end conference and etc.



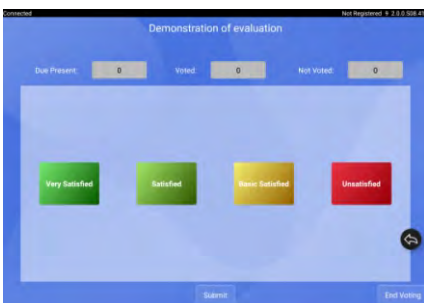
Registration interface: chairmand terminal initiate registration, all paperless terminal can conduct registration



Registration result interface: After registration, all paperless terminals display the registration result



Conference topic interface: display the preset conference topic list, the chairman can initiate voting in according to the agenda, and all terminals will enter the voting interface.



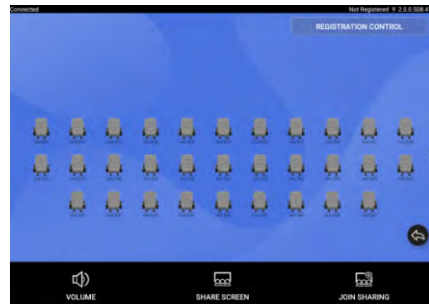
Voting interface: press the corresponding button and submit



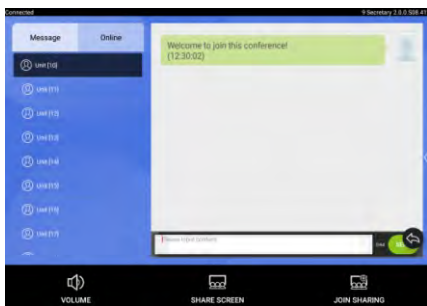
Voting result interface: when the paperless chairman terminal ends the voting, the results will be displayed on each paperless terminal.



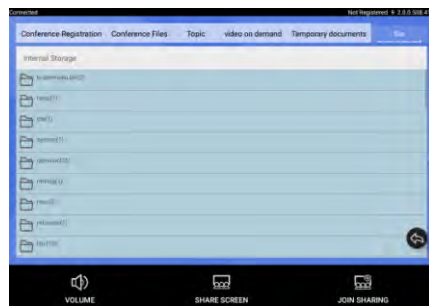
Paperless call service interface: click the corresponding button and submit, the call service terminal can receive the request, the service personnel will send what the user asks for.



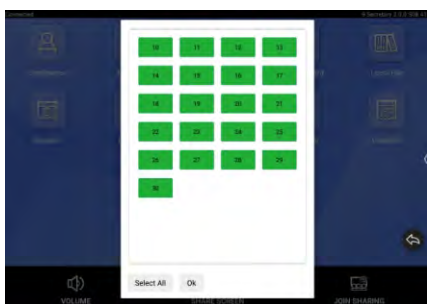
Seat management interface: the system supports the seat design of the venue, and displays the seat layout of the venue on the paperless interface, and dynamically displays the status of participants such as online, registration, microphone switch, and voting



Internal message: participants can send internal messages to communicate by this module.



Files management: support import or export files from SD card and USB flash disk, supports files operation(copy, cut, rename, delete)

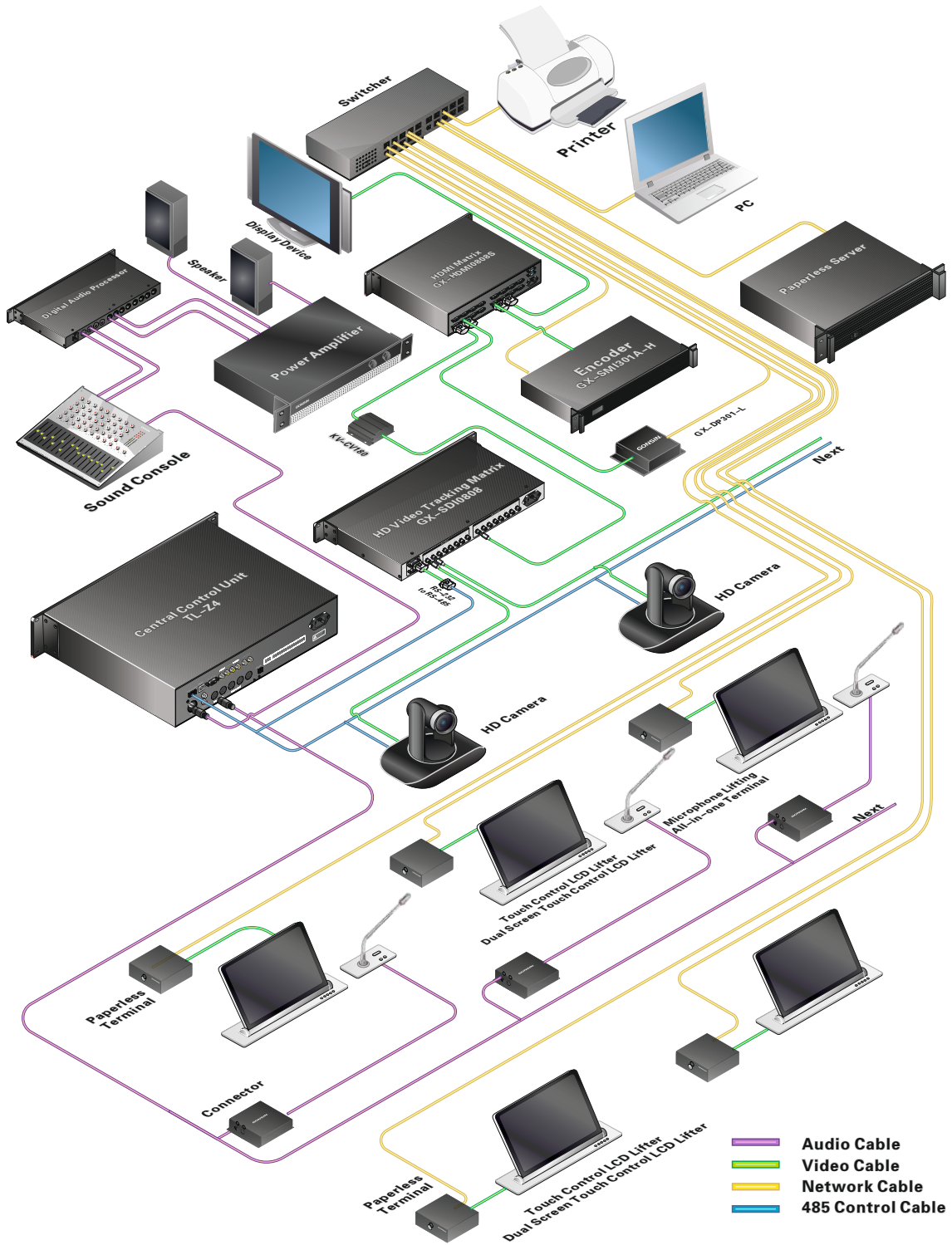


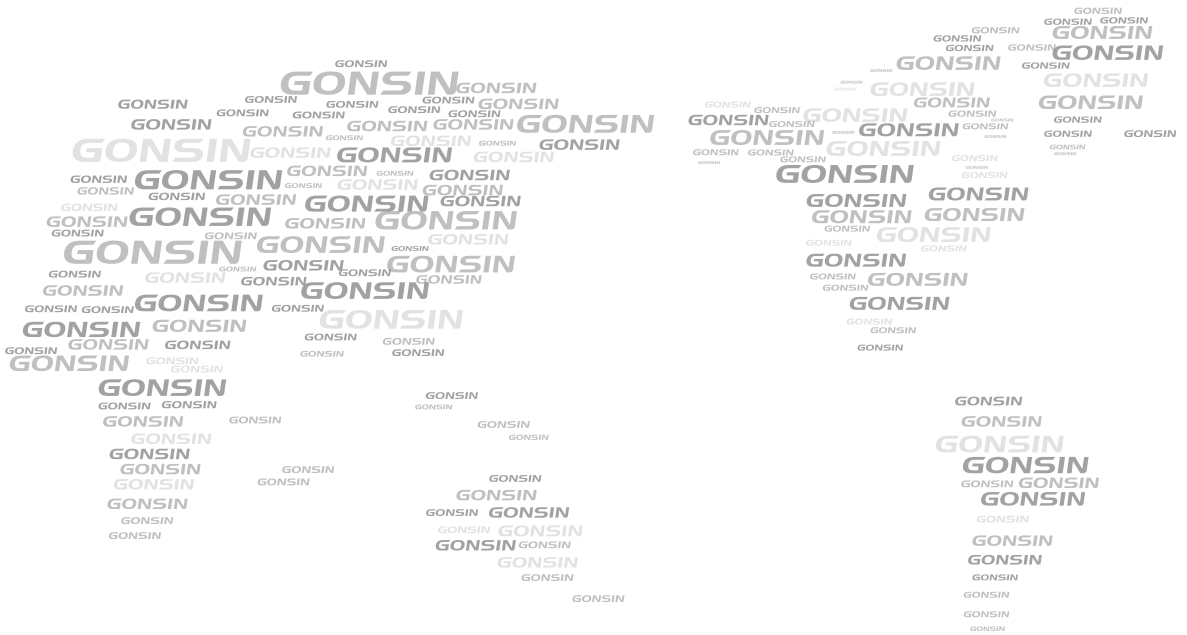
Screen sharing interface: after a user initiates the screen sharing, all paperless terminal can display the same interface simultaneously, the initiator can make notes in the terminal.



Simultaneous interpretation channel selection interface: The desktop paperless system has its own simultaneous interpretation function, and the lifting paperless system can expand the simultaneous interpretation function. Participants select the simultaneous interpretation channel through the paperless interface and listen to the corresponding language

System Configuration





GONSIN CONFERENCE EQUIPMENT CO.,LTD.
www.gonsin.com

All rights reserved. The information and specifications included are subject to change without prior notice.



ENGLISH WeChat

